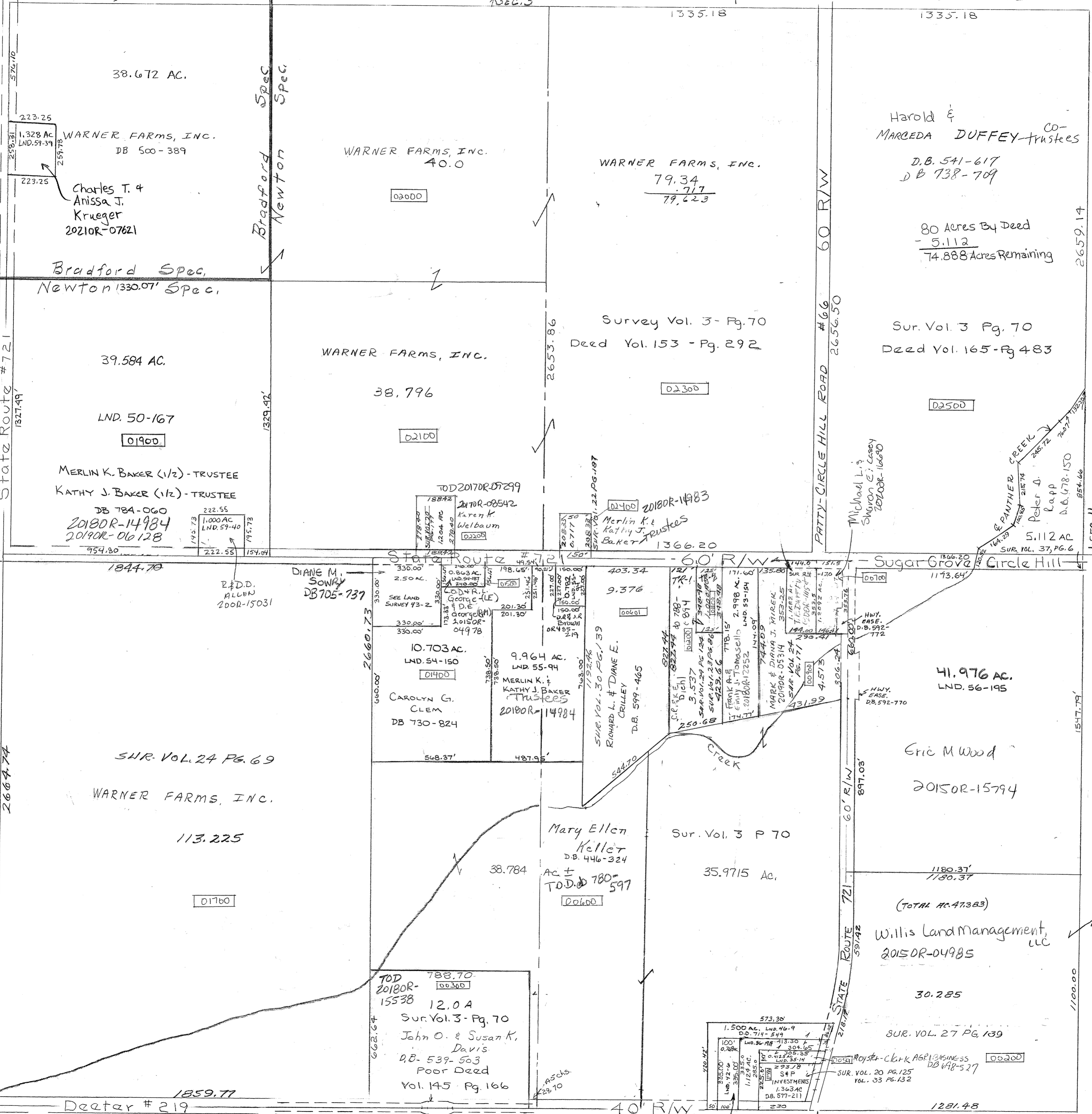


Survey =
 Vol. 2 Pg. 101 - whole
 Vol. 3 Pg. 70 - NE QTR - NW P1 SE & E P1 SW
 Vol. 20 Pg. 125 S. Cen SE QTR.
 Vol. 37, Pg. 6 - NE 1/4
 Lnd. 43-2 NE Pt. of SW QTR.
 Lnd. 50-167 SW Pt. of NW QTR.
 Lnd. 56-195 NE Pt. of SE QTR.

ADARKE COUNTY
 State Route # 721
 1327.49'

See Road Record
 BK 8 Pg 70 - Deater Road



120-
 PARCEL NUMBER



Revised: 5/5/2021
 APalmer