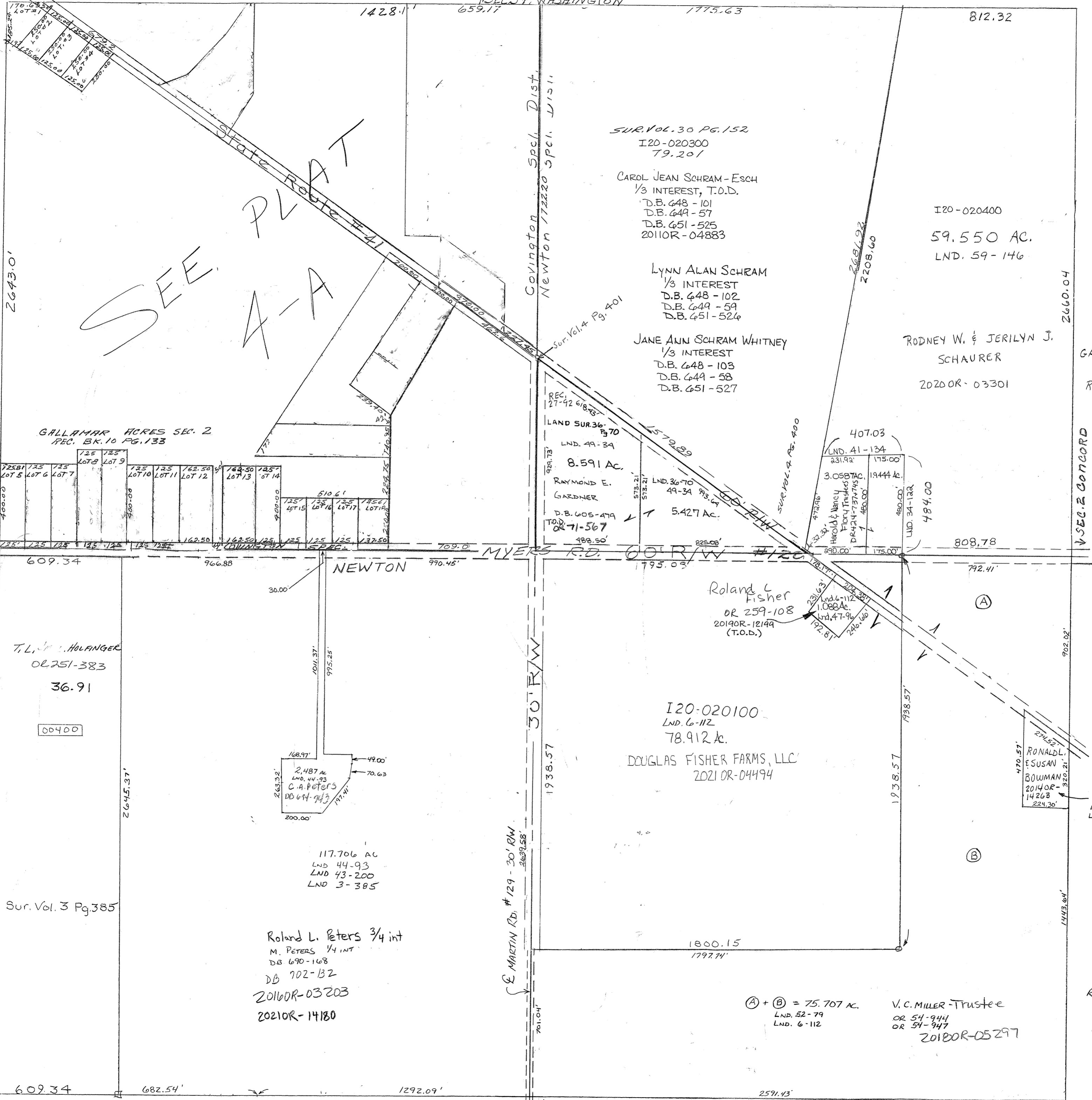


Surveys - SW Qr  
 Pg 385 - Ref to Cor Stone  
 Pg 400 - Ref to Cor Stone  
 Pg 401 - Ref to Cor Stone  
 Pg 112 - SE Qr  
 Pg 190 - NW gr cor



PARCEL NUMBER  
 I20 -



GALLAMAR DITCH EASEMENTS  
 REC. 27-92

I20-020400  
 59.550 AC.  
 LND. 59-146

SUR. Vol. 30 Pg. 152  
 I20-020300  
 T9.201  
 CAROL JEAN SCHRAM-ESCH  
 1/3 INTEREST, T.O.D.  
 D.B. 648-101  
 D.B. 649-57  
 D.B. 651-525  
 2011OR-04883

LYNN ALAN SCHRAM  
 1/3 INTEREST  
 D.B. 648-102  
 D.B. 649-59  
 D.B. 651-524

JANE ANN SCHRAM WHITNEY  
 1/3 INTEREST  
 D.B. 648-103  
 D.B. 649-58  
 D.B. 651-527

RODNEY W. & JERILYN J.  
 SCHAURER  
 2020OR-03301

LAND SUR. 36-70  
 LND. 49-34  
 8.591 AC.  
 RAYMOND E.  
 GARDNER  
 D.B. 605-479  
 TO BE 71-567  
 488.50'

407.03  
 LND. 41-134  
 231.99'  
 175.00'  
 3.0587 AC.  
 19444 AC.  
 HAROLD & NANCY  
 FISBY TRUSTEES  
 D.B. 424-737-745  
 1 450.00'  
 1 450.00'

Roland L. Fisher  
 OR 259-108  
 2019OR-12199  
 (T.O.D.)  
 1.088 AC.  
 LND. 6-112  
 78.912 AC.  
 DOUGLAS FISHER FARMS, LLC  
 2021OR-04494

RONALD L.  
 ESUSAN  
 SUSAN  
 BOWMAN  
 2014OR-  
 14263  
 224.30'  
 2.033 AC.  
 LND. 52-79  
 LND. 6-112

117.706 AC  
 LND 44-93  
 LND 43-200  
 LND 3-385

Roland L. Peters 3/4 int  
 M. PETERS 1/4 int  
 DB 690-168  
 DB 702-132  
 2016OR-03203  
 2021OR-14180

(A) + (B) = 75.707 AC.  
 LND. 52-79  
 LND. 6-112

V. C. MILLER-Trustee  
 OR 54-944  
 OR 54-947  
 2018OR-05297

REVISED  
 8-16-21  
 APalmer