

MONROE TWP

MIAMI COUNTY, OHIO

PLAT 33-B

Section 36, Town 6, Range 5

N.W. Quarter

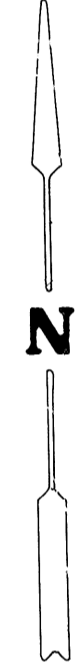
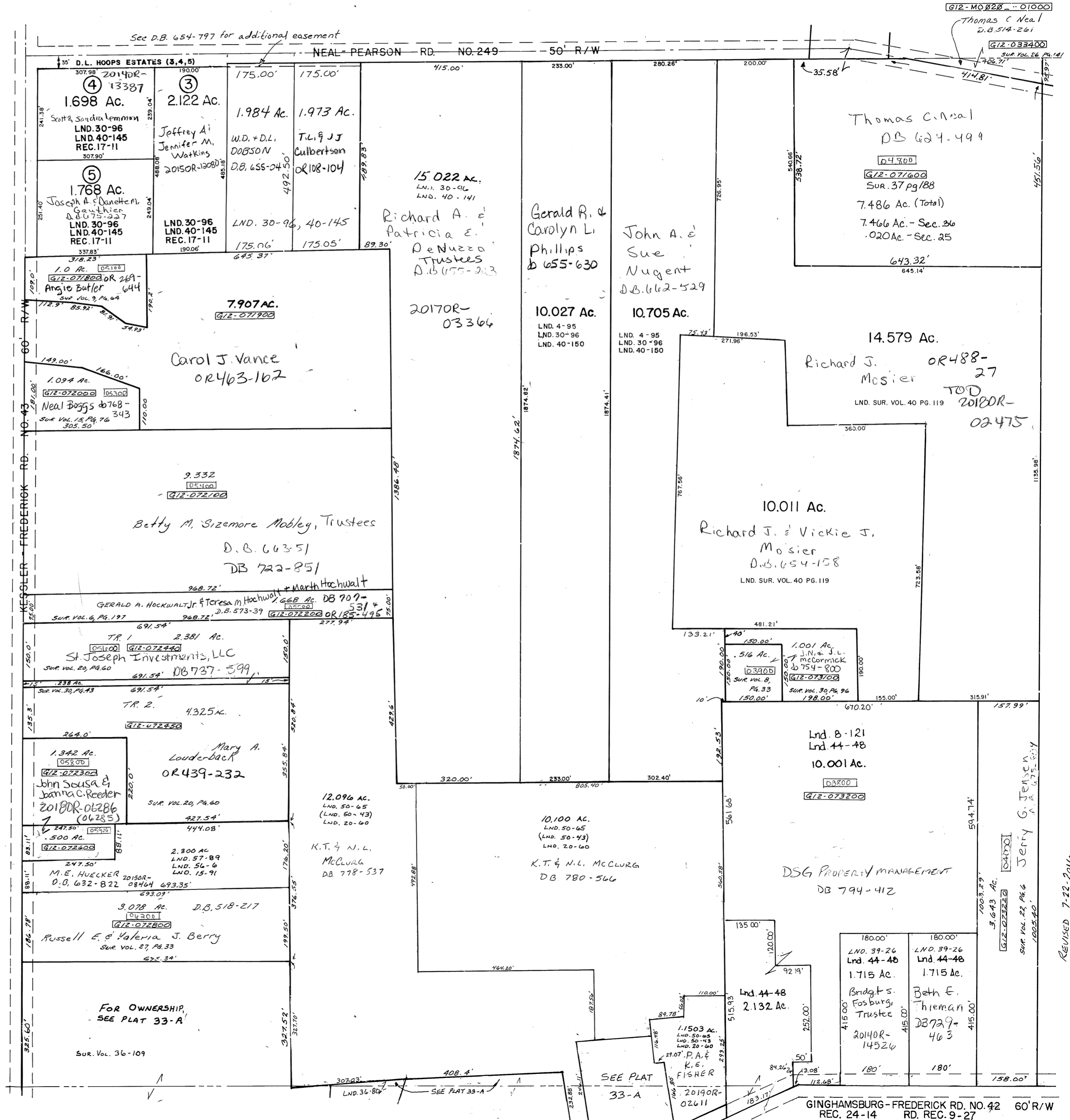
SMDA NUMBER
G12-M0033B-

SCALE: 1" = 200'

SURVEYS

- SUR. VOL. 4, PG. 95
- SUR. VOL. 6, PG. 197
- SUR. VOL. 8, PG. 33
- SUR. VOL. 8, PG. 121
- SUR. VOL. 9, PG. 64
- SUR. VOL. 15, PG. 76
- SUR. VOL. 15, PG. 91
- SUR. VOL. 15, PG. 93
- SUR. VOL. 20, PG. 60
- SUR. VOL. 22, PG. 6
- SUR. VOL. 26, PG. 141
- SUR. VOL. 27, PG. 33
- SUR. VOL. 30, PG. 96
- SUR. VOL. 30, PG. 43
- SUR. VOL. 37, PG. 188
- SUR. VOL. 39, PG. 26
- SUR. VOL. 40, PG. 119
- SUR. VOL. 40, PG. 141
- SUR. VOL. 40, PG. 145
- SUR. VOL. 40, PG. 150
- REC. 17-11
- Lnd. 44-48
- LND. 50-43
- LND. 50-65
- REC. 24-14, RD. REC. 9-27
- LND. 56-6
- LND. 57-89

LND 36-109
36-80



REVISED 7-22-2016
DVENTURA

GINGHAMSBURG-FREDERICK RD. NO. 42
REC. 24-14 RD. REC. 9-27