

MONROE TWP

MIAMI COUNTY, OHIO

PLAT 33-A

Section 36, Town 6, Range 5

S.W. Quarter

SCALE: 1" = 200'

PARCEL NUMBER
G12 -

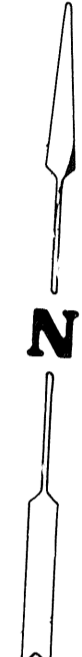
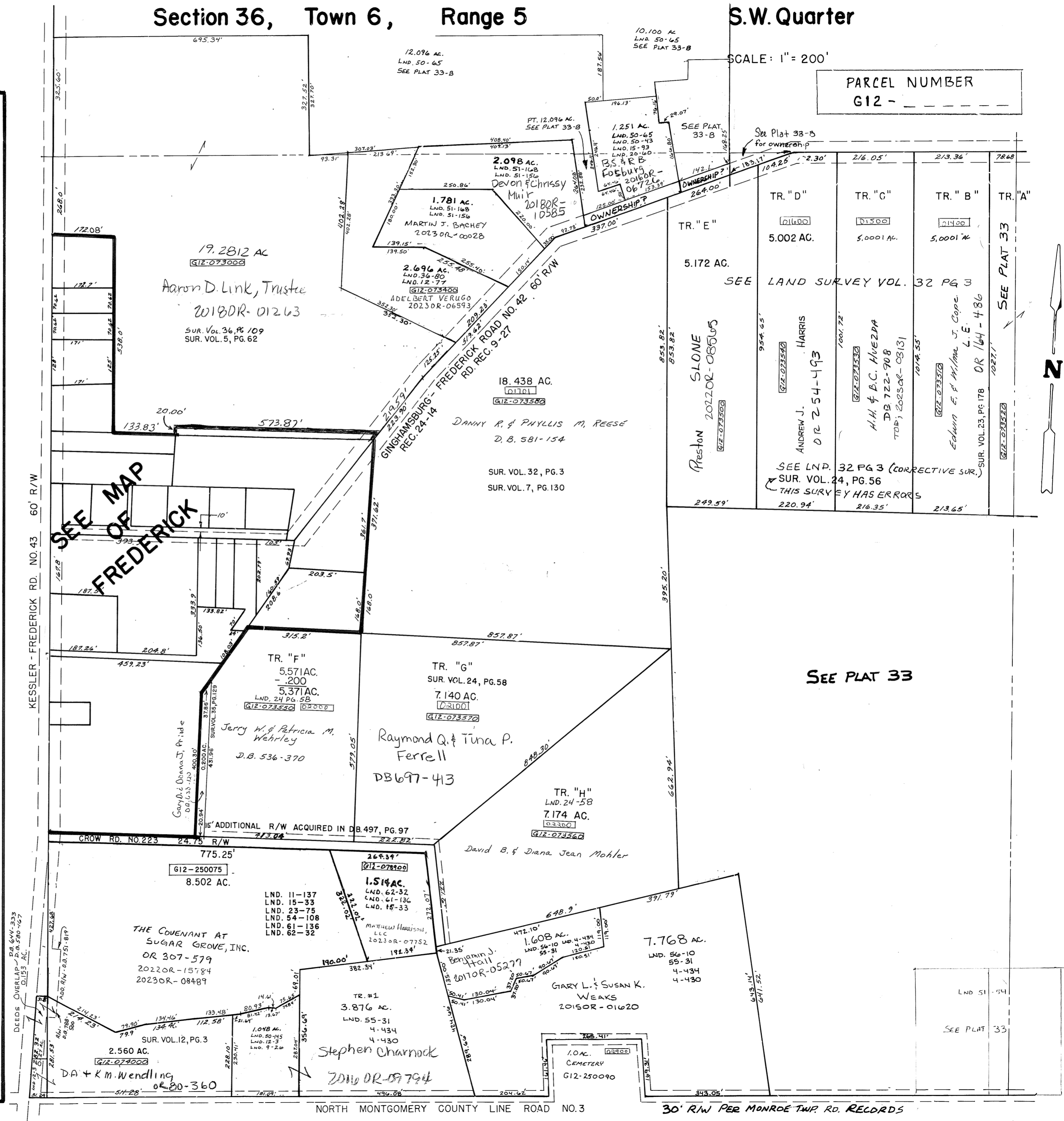
SURVEYS

- LOT SUR. VOL. 4, PG. 116
- LAND VOL. 4, PG. 430
- LAND VOL. 4, PG. 434
- LAND VOL. 5, PG. 62, 74
- LAND VOL. 6, PG. 11
- LAND VOL. 7, PG. 130
- LAND VOL. 8, PG. 11
- LAND VOL. 9, PG. 26
- LAND VOL. 10, PG. 184
- LAND VOL. 11, PG. 137
- LAND VOL. 11, PG. 154
- LAND VOL. 12, PG. 3
- LAND VOL. 12, PG. 77
- LAND VOL. 14, PG. 110
- LAND VOL. 15, PG. 33
- LAND VOL. 15, PG. 93
- LAND VOL. 19, PG. 180
- LAND VOL. 22, PG. 43
- LAND VOL. 23, PG. 75
- LAND VOL. 23, PG. 178
- LAND VOL. 24, PG. 56
- LAND VOL. 24, PG. 58
- LAND VOL. 26, PG. 173
- LAND VOL. 27, PG. 123
- LAND VOL. 28, PG. 164
- LAND VOL. 31, PG. 134
- LAND VOL. 32, PG. 3
- LAND VOL. 32, PG. 81
- LAND VOL. 36, PG. 80
- LAND VOL. 36, PG. 109
- LAND SUR. 40 PG. 137
- Land 44-48
- Land 50-43
- Land 50-65
- Land 50-145
- Land 51-54
- Land 51-156
- Land 51-168
- Land 54-108
- REC. 24-14, RD. REC. 9-27
- Land 55-31
- Land 56-10
- Land 58-133
- Land 61-136
- Land 62-32

Land 20-60

SEE MAP OF FREDERICK

REVISED BY: 8-9-2023 ADP



SEE PLAT 33

30' R/W PER MONROE TWP. RD. RECORDS