

MONROE TWP.

MIAMI COUNTY, OHIO

PLAT 26

Section 30, Town 4, Range 6

SCALE: 1" = 400'

SURVEYS

S.E. QUARTER

SUR. VOL. 21, PG. 3
SUR. VOL. 27, PG. 164
SUR. VOL. 31, PG. 37
LAND. VOL. 45, PG. 43
LAND. VOL. 48, PG. 85

N.E. QUARTER

SUR. VOL. 18, PG. 46
SUR. VOL. 18, PG. 70
SUR. VOL. 19, PG. 59
SUR. VOL. 21, PG. 180
SUR. VOL. 22, PG. 49
SUR. VOL. 22, PG. 126
SUR. VOL. 27, PG. 136
SUR. VOL. 27, PG. 164
LAND. VOL. 40, PG. 5
LAND. VOL. 55-162

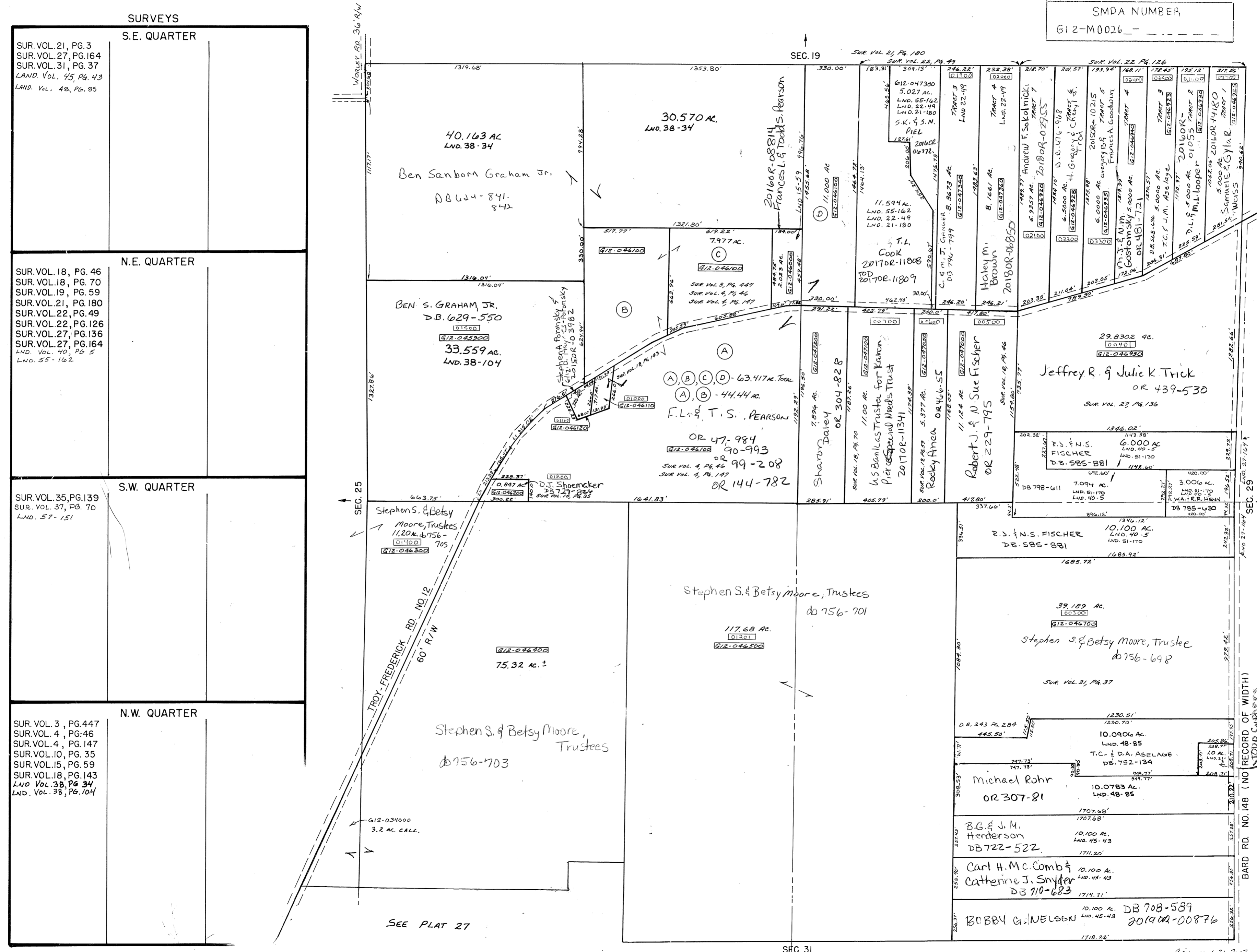
S.W. QUARTER

SUR. VOL. 35, PG. 139
SUR. VOL. 37, PG. 70
LAND. VOL. 57-151

N.W. QUARTER

SUR. VOL. 3, PG. 447
SUR. VOL. 4, PG. 46
SUR. VOL. 4, PG. 147
SUR. VOL. 10, PG. 35
SUR. VOL. 15, PG. 59
SUR. VOL. 18, PG. 143
LAND. VOL. 38, PG. 34
LAND. VOL. 38, PG. 104

SMDA NUMBER
G12-M0026



Worley Rd. 36' R/W

SEC. 25

TROY-FREDRICK RD. NO. 12
60' R/W

G12-034000
3.2 AC. CALL.

SEC. 19

SEC. 31

SEC. 29

BARD RD. NO. 148 (NO RECORD OF WIDTH)
TODD CYPHER
201801-02673
G12-046620

SEE PLAT 27