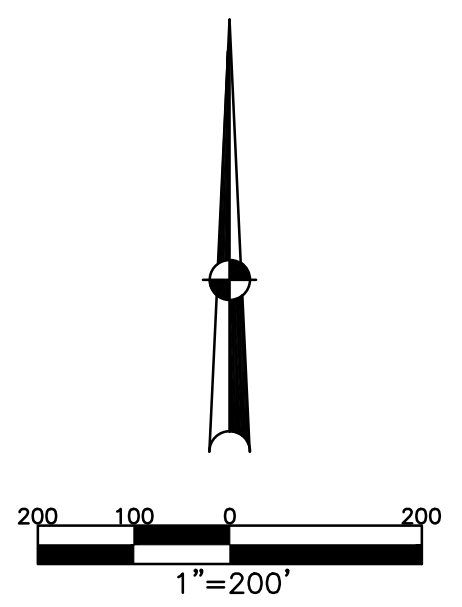


MONROE TWP.
MIAMI COUNTY, OHIO

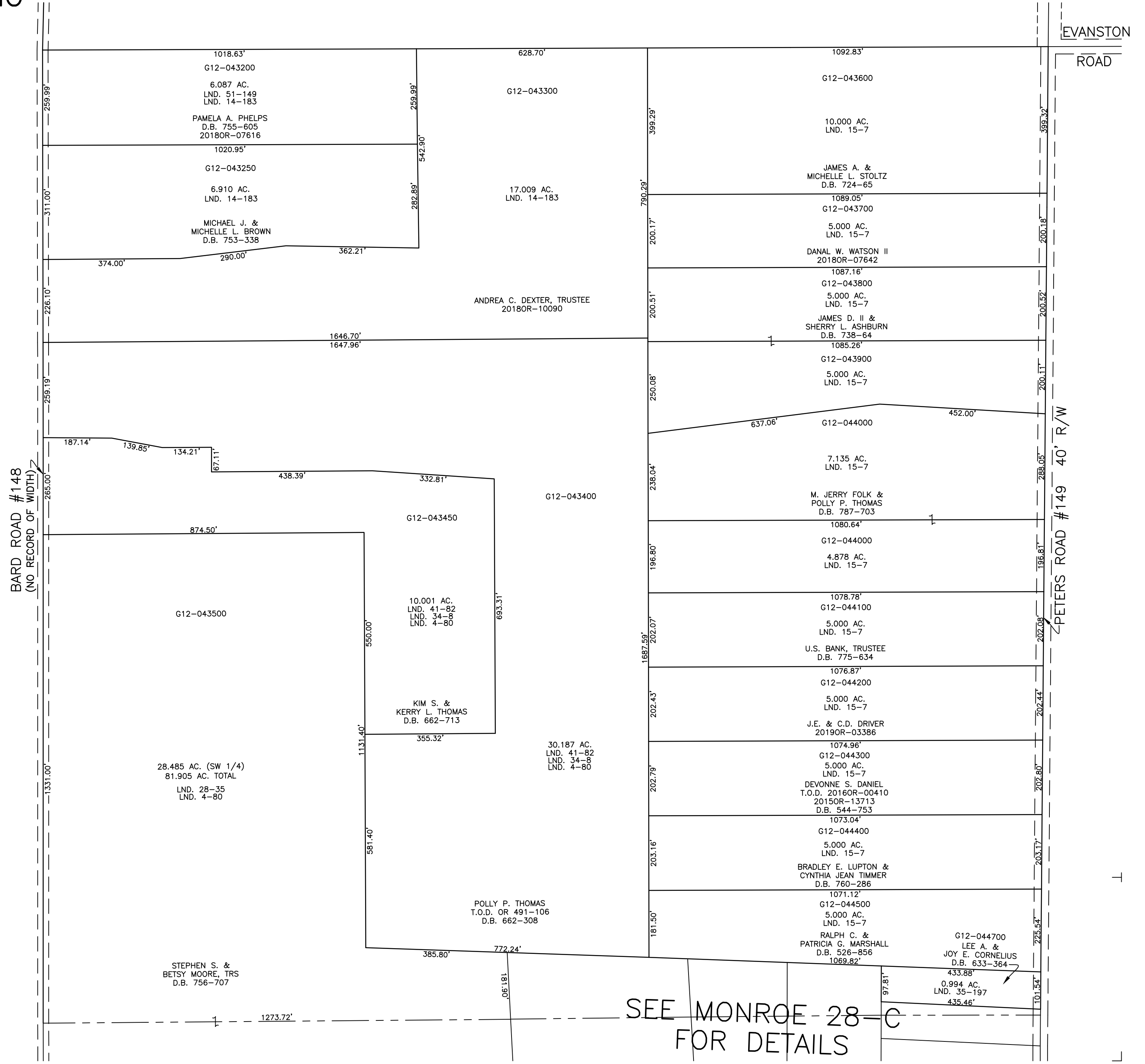
SECTION 29 TOWN 4 RANGE 6
SW 1/4

PARCEL NUMBER
G12-_____

PLAT 25-B



ABBREVIATION LEGEND		
2014OR-07759	=	RECORDER'S DOCUMENT NUMBER
OR 257-619	=	OFFICIAL RECORD 257 PAGE 619
D.B. 613-172	=	DEED BOOK 613, PAGE 172
REC. 15-72	=	RECORDER'S PLAT BOOK 15, PAGE 72
LND. 33-15	=	LAND SURVEY VOLUME 33, PAGE 15
LOT 19-12	=	LOT SURVEY VOLUME 19, PAGE 12
R.R. 8-29	=	ROAD RECORD VOLUME 8, PAGE 29
R/W	=	RIGHT OF WAY
⊕	=	CENTERLINE
AC.	=	ACRES
TWP.	=	TOWNSHIP
TR.	=	TRACT
②	=	LOT CREATED BY RECORDER'S PLAT
LINE LEGEND		
	=	Blow-up Boundary
	=	Property Line
	=	Lot Split Line
	=	Section Line
	=	Centerline
	=	Right-of-Way Line
	=	Corporation Line
SURVEY INDEX		
LND. 4-80		
LND. 14-183		
LND. 15-7		
LND. 15-47		
LND. 26-130		
LND. 28-35		
LND. 33-78		
LND. 34-8		
LND. 35-197		
LND. 41-82		
LND. 46-175		
LND. 51-149		



PREPARED BY: MIAMI COUNTY ENGINEER'S MAP DEPARTMENT
PAUL P. HUELSKAMP, P.E., P.S., COUNTY ENGINEER
DATE: MAY 3, 2018 MDB
REVISED: April 4, 2019 DVENTURA

SEE MONROE-28-C
FOR DETAILS