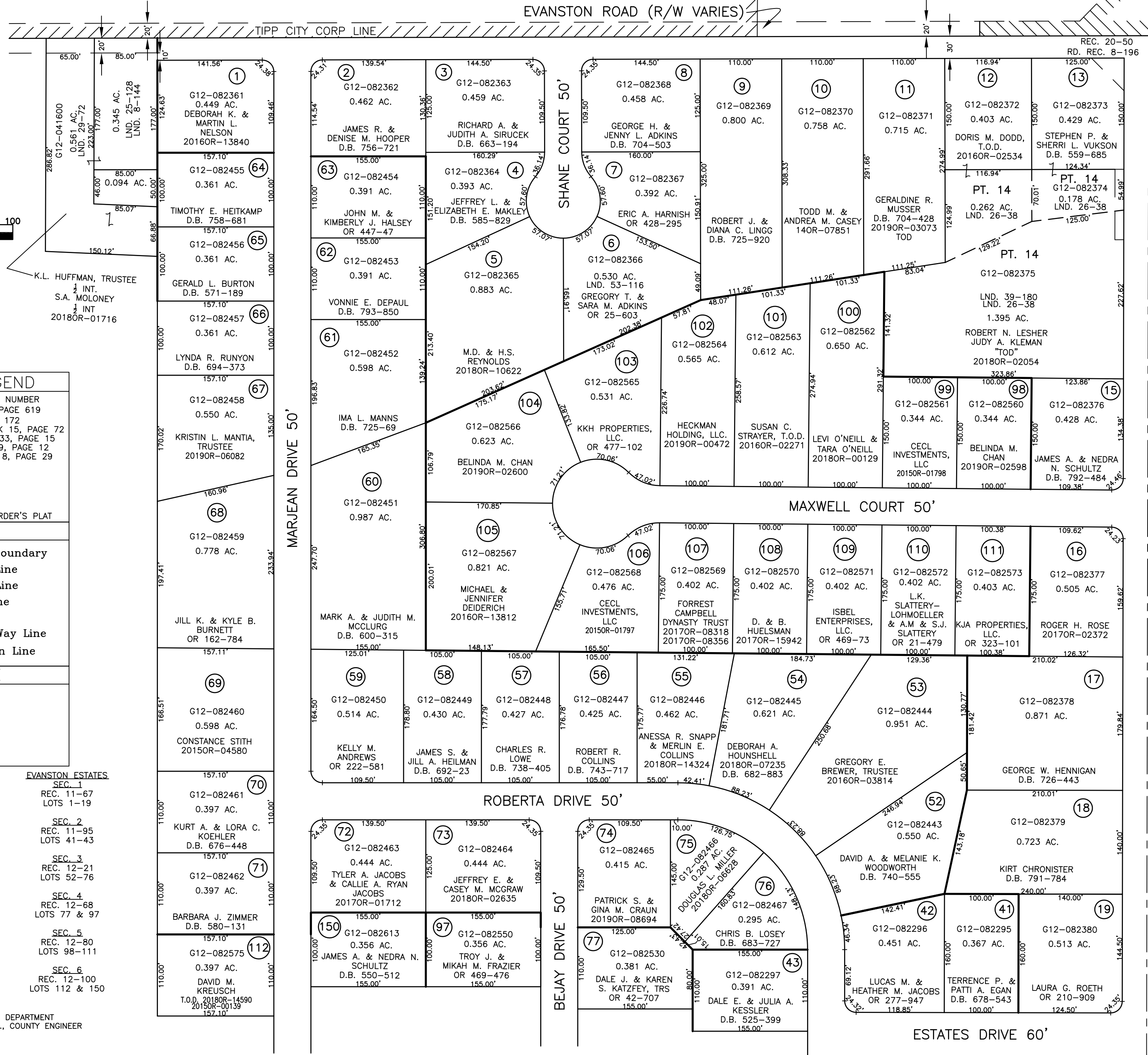
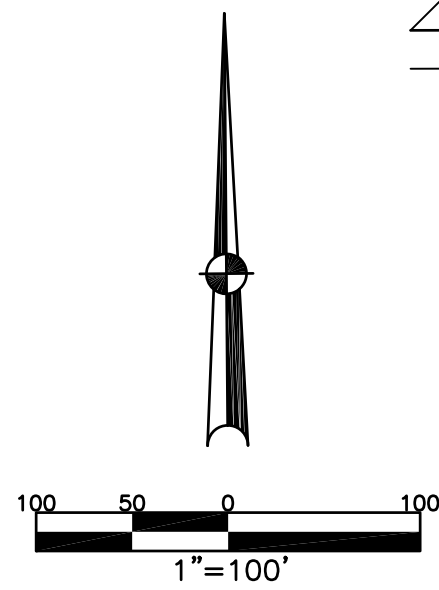


MONROE TWP.
MIAMI COUNTY, OHIO

SECTION 28 TOWN 4 RANGE 6
PT. SE 1/4

PARCEL NUMBER
G12- PLAT 24-C



ABBREVIATION LEGEND	
20140R-07759	= RECORDER'S DOCUMENT NUMBER
OR 257-619	= OFFICIAL RECORD 257 PAGE 619
D.B. 613-172	= DEED BOOK 613, PAGE 172
REC. 15-72	= RECORDER'S PLAT BOOK 15, PAGE 72
LND. 33-15	= LAND SURVEY VOLUME 33, PAGE 15
LOT 19-12	= LOT SURVEY VOLUME 19, PAGE 12
R.R. 8-29	= ROAD RECORD VOLUME 8, PAGE 29
R/W	= RIGHT OF WAY
CL	= CENTERLINE
AC.	= ACRES
TWP.	= TOWNSHIP
TR.	= TRACT
Ⓢ	= LOT CREATED BY RECORDER'S PLAT

LINE LEGEND	
— — — — —	Blow-up Boundary
—————	Property Line
- - - - -	Lot Split Line
—————	Section Line
—————	Centerline
—————	Right-of-Way Line
///////	Corporation Line

SURVEY INDEX	
LND. 8-144	REC. 11-67
LND. 25-128	REC. 11-95
LND. 26-38	REC. 12-21
LND. 29-72	REC. 12-68
LND. 39-180	REC. 12-80
LND. 53-116	REC. 12-100
	REC. 20-50
	RD. REC. 8-196

EVANSTON ESTATES
 SEC. 1
 REC. 11-67
 LOTS 1-19
 SEC. 2
 REC. 11-95
 LOTS 41-43
 SEC. 3
 REC. 12-21
 LOTS 52-76
 SEC. 4
 REC. 12-68
 LOTS 77 & 97
 SEC. 5
 REC. 12-80
 LOTS 98-111
 SEC. 6
 REC. 12-100
 LOTS 112 & 150

PREPARED BY: MIAMI COUNTY ENGINEER'S MAP DEPARTMENT
 PAUL P. HUELSKAMP, P.E., P.S., COUNTY ENGINEER
 DATE: DECEMBER 4, 2014 MB
 REVISED: August 6, 2019 IGRIFFIN