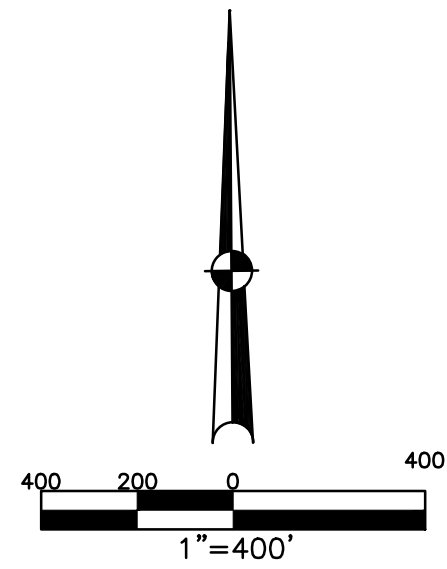


MONROE TWP.
MIAMI COUNTY, OHIO

SECTION 28 TOWN 4 RANGE 6

PARCEL NUMBER
G12-

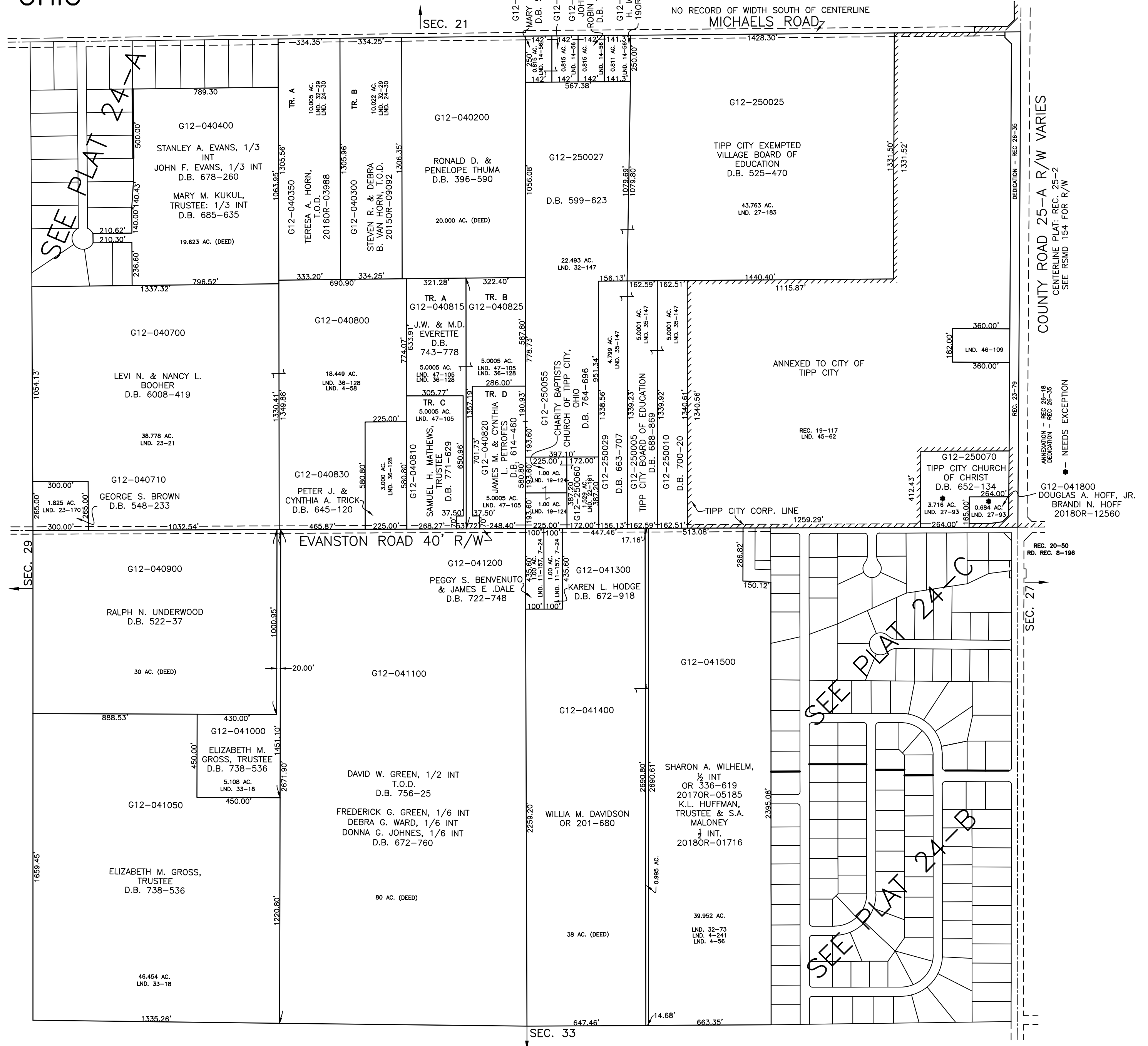
PLAT 24



ABBREVIATION LEGEND	
20140R-07759	= RECORDER'S DOCUMENT NUMBER
OR 257-619	= OFFICIAL RECORD 257 PAGE 619
D.B. 613-172	= DEED BOOK 613, PAGE 172
REC. 15-72	= RECORDER'S PLAT BOOK 15, PAGE 72
LND. 33-15	= LAND SURVEY VOLUME 33, PAGE 15
LOT 19-12	= LOT SURVEY VOLUME 19, PAGE 12
R.R. 8-29	= ROAD RECORD VOLUME 8, PAGE 29
R/W	= RIGHT OF WAY
C	= CENTERLINE
AC.	= ACRES
TWP.	= TOWNSHIP
TR.	= TRACT
②	= LOT CREATED BY RECORDER'S PLAT

LINE LEGEND	
	Blow-up Boundary
	Property Line
	Lot Split Line
	Section Line
	Centerline
	Right-of-Way Line
	Corporation Line

SURVEY INDEX	
NORTHEAST QUARTER	
LND. 14-56	REC. 19-117
LND. 19-124	REC. 20-50
LND. 22-161	REC. 25-2
LND. 27-83	RD. REC. 8-196
LND. 27-183	RSMO 154
LND. 35-147	REC. 26-18
LND. 45-62	REC. 26-35
LND. 45-169	
LND. 41-135	
LND. 54-90	
LND. 54-182	
LND. 55-24	
SOUTHEAST QUARTER	
LND. 4-56	REC. 20-50
LND. 4-241	RD. REC. 8-196
LND. 7-24	
LND. 11-57	
LND. 24-3	
LND. 32-73	
SOUTHWEST QUARTER	
LND. 33-18	
NORTHWEST QUARTER	
LND. 4-58	RD. SURVEY 8-51
LND. 11-39	
LND. 23-21	
LND. 23-170	
LND. 24-30	
LND. 32-29	
LND. 35-128	
LND. 41-105	



PREPARED BY: MIAMI COUNTY ENGINEER'S MAP DEPARTMENT
PAUL P. HUELSKAMP, P.E., P.S., COUNTY ENGINEER
DATE: DECEMBER 8, 2014 MB
REVISED: August 12, 2019 DVENTURA