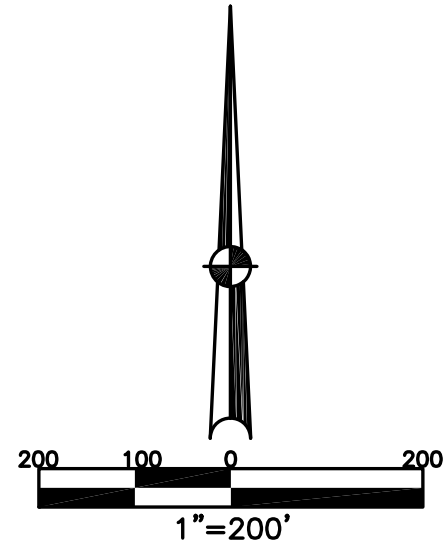


MONROE TOWNSHIP
MIAMI COUNTY, OHIO

SOUTHWEST QUARTER
SECTION 27 TOWN 4 RANGE 6
EVANSTON ROAD #150 ~ R/W VARIES

PLAT 23B

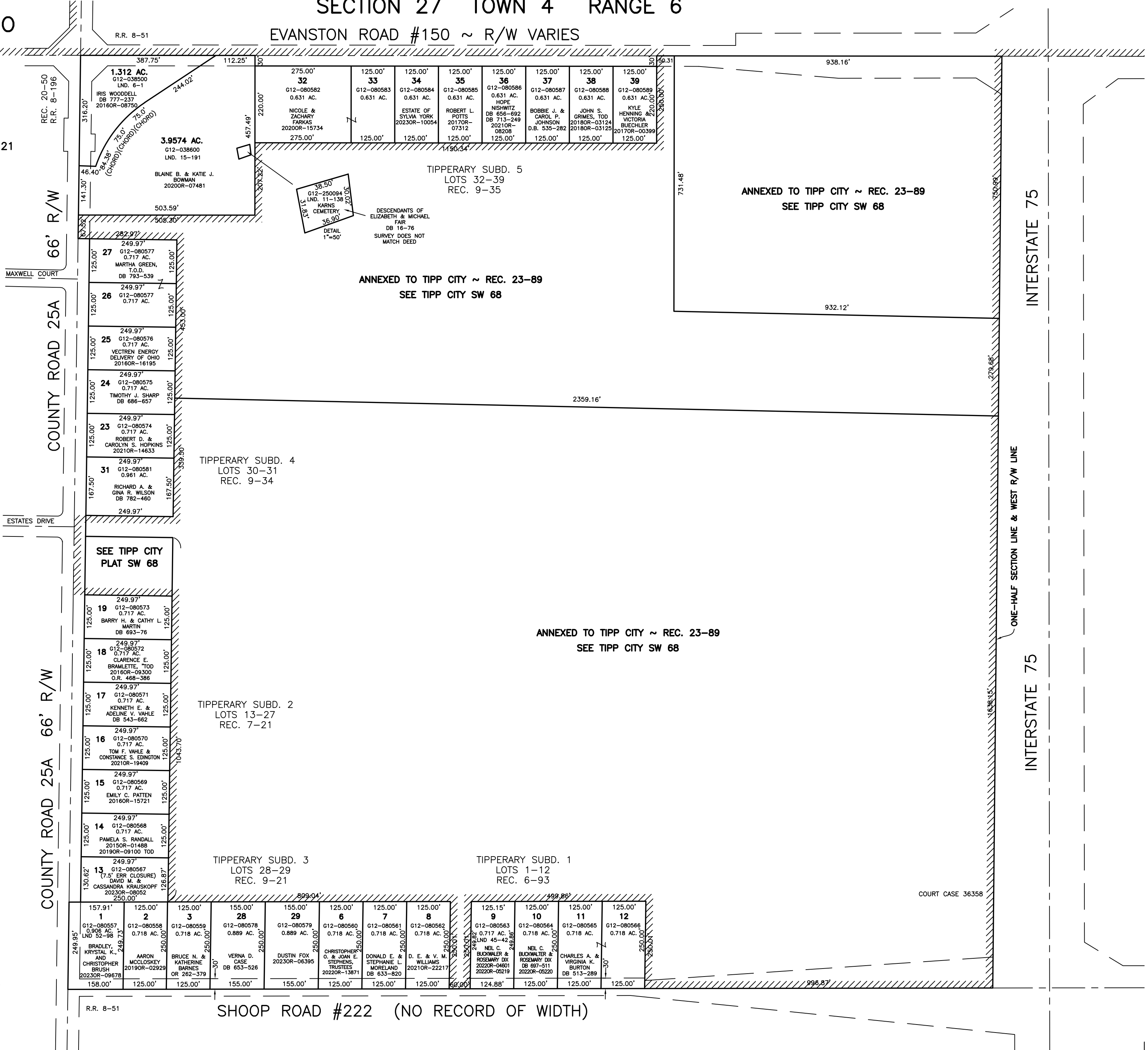
ANNEXATION
LOTS 4118-4121
REC. 23-89



ABBREVIATION LEGEND	
OR 33-875	= OFFICIAL RECORD 33, PAGE 875
D.B. 613-172	= DEED BOOK 613, PAGE 172
REC. 15-72	= RECORDER'S PLAT BOOK 15, PAGE 72
LND. 33-15	= LAND SURVEY VOLUME 33, PAGE 15
LOT 19-12	= LOT SURVEY VOLUME 19, PAGE 12
R.R. 8-29	= ROAD RECORD VOLUME 8, PAGE 29
R/W	= RIGHT OF WAY
CL	= CENTERLINE
AC.	= ACRES
TWP.	= TOWNSHIP
TR.	= TRACT
Ⓢ	= LOT CREATED BY RECORDER'S PLAT

LINE LEGEND	
	Blow-up Boundary
	Property Line
	Lot Split Line
	Section Line
	Centerline
	Right-of-Way Line
	Corporation Line

SURVEY INDEX	
REC. 6-93	LND. 6-1
REC. 7-21	LND. 11-138
REC. 9-21	LND. 15-191
REC. 9-34	LND. 45-42
REC. 9-35	LND. 52-98
REC. 20-50	
REC. 23-89	
R.R. 8-51	
R.R. 8-196	



PREPARED BY: MIAMI COUNTY ENGINEER'S MAP DEPARTMENT
PAUL P. HUELSKAMP, P.E., P.S., COUNTY ENGINEER
DATE: JANUARY 23, 2013 DS
REVISED: September 13, 2023 JBOGART