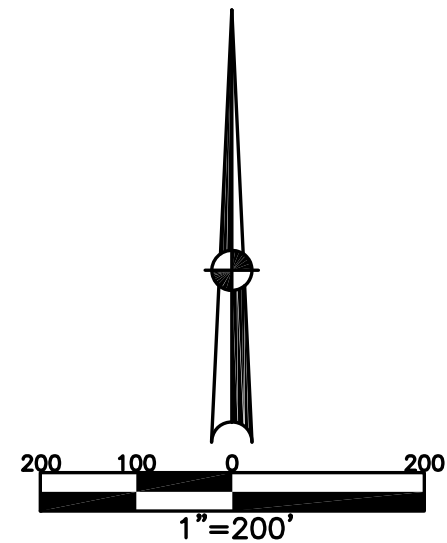


MONROE TOWNSHIP
MIAMI COUNTY, OHIO

SOUTHEAST QUARTER
SECTION 27 TOWN 4 RANGE 6

PARCEL NUMBER
G12-_____

PLAT 23A



ABBREVIATION LEGEND

20140R-07759 =	RECORDER'S DOCUMENT NUMBER
OR 57-197 =	OFFICIAL RECORD 57 PAGE 197
D.B. 613-172 =	DEED BOOK 613, PAGE 172
REC. 15-72 =	RECORDER'S PLAT BOOK 15, PAGE 72
LND. 33-15 =	LAND SURVEY VOLUME 33, PAGE 15
LOT 19-12 =	LOT SURVEY VOLUME 19, PAGE 12
R.R. 8-29 =	ROAD RECORD VOLUME 8, PAGE 29
R/W	= RIGHT OF WAY
CL	= CENTERLINE
AC.	= ACRES
TWP.	= TOWNSHIP
TR.	= TRACT
Ⓢ	= LOT CREATED BY RECORDER'S PLAT

LINE LEGEND

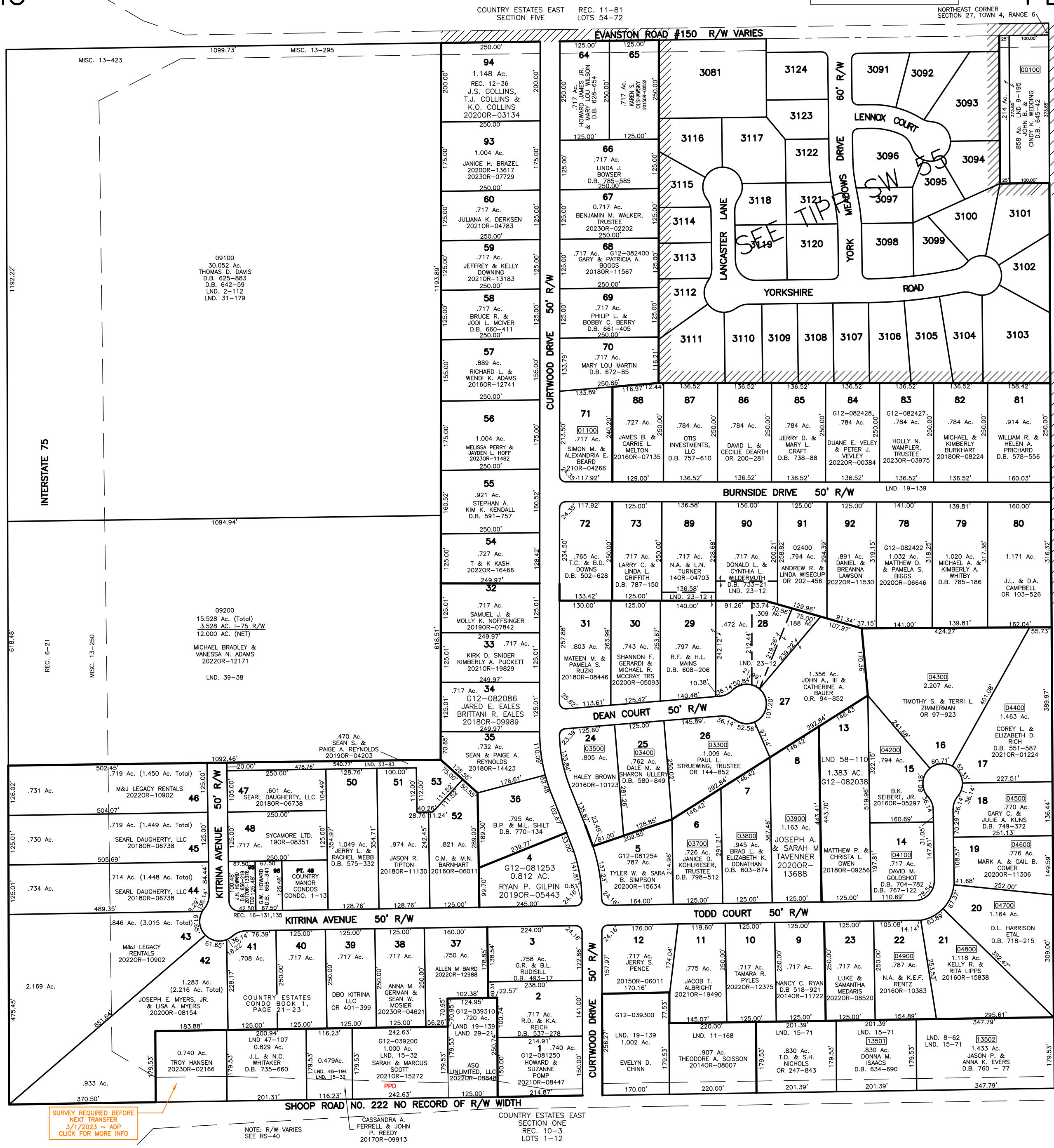
— — — — —	Blow-up Boundary
—————	Property Line
- - - - -	Lot Split Line
- - - - -	Section Line
- - - - -	Centerline
- - - - -	Right-of-Way Line
///////	Corporation Line

SURVEY INDEX

REC. 6-21	LND. 2-112	CONDO. 1-21/23
REC. 10-3	LND. 8-62	CONDO. 1-15
REC. 10-43	LND. 9-145	MISC. 13-423
REC. 10-107	LND. 10-9	MISC. 13-295
REC. 11-6	LND. 10-85	MISC. 13-250
REC. 11-81	LND. 11-168	MISC. 13-250
REC. 11-145	LND. 15-32	R.S. 40
REC. 12-36	LND. 15-71	
REC. 12-37	LND. 19-139	
REC. 16-131	LND. 23-12	
REC. 16-135	LND. 29-21	
	LND. 30-122	
	LND. 31-179	
	LND. 38-166	
	LND. 39-38	
	LND. 46-194	
	LND. 47-107	
	LND. 58-110	

COUNTRY ESTATES EAST
SECTION FOUR
REC. 11-6
LOTS 37-53

PREPARED BY: MIAMI COUNTY ENGINEER'S MAP DEPARTMENT
PAUL P. HUELSKAMP, COUNTY ENGINEER
DATE: JUNE 24, 1996
REVISED: November 9, 2023 DJACQUEMIN



COUNTRY ESTATES EAST
SECTION SIX
REC. 11-145
LOTS 73-88

COUNTRY ESTATES EAST
REPLAT
SECTION SIX
REC. 12-37
LOTS 89-92

COUNTRY ESTATES EAST
SECTION THREE
REC. 10-107
LOTS 24-36

COUNTRY ESTATES EAST
SECTION TWO
REC. 10-43
LOTS 13-23

SHOOP ROAD NO. 222 NO RECORD OF R/W WIDTH
NOTE: R/W VARIES SEE RS-40
CASSANDRA A. FERRELL & JOHN P. REEDY
20170R-09913
COUNTRY ESTATES EAST
SECTION ONE
REC. 10-3
LOTS 1-12