

MONROE TWP

MIAMI COUNTY, OHIO

PLAT 20

Section 25, Town 6, Range 5

SCALE: 1" = 400'

SURVEYS

S.E. QUARTER

SUR. VOL. 1, PG. 249
 SUR. VOL. 3, PG. 38
 SUR. VOL. 12, PG. 145
 SUR. VOL. 27, PG. 148
 SUR. VOL. 30, PG. 80
 SUR. VOL. 34, PG. 77
 LND. 51-13
 LND. 51-29
 LND. 57-151

N.E. QUARTER

SUR. VOL. 1, PG. 249
 SUR. VOL. 4, PG. 46
 SUR. VOL. 6, PG. 188
 LND. SUR. 39 PG. 42
 LND. SUR. 48 PG. 29
 LND. SUR. 56 PG. 89
 LND. 57-188
 LND. 58-7

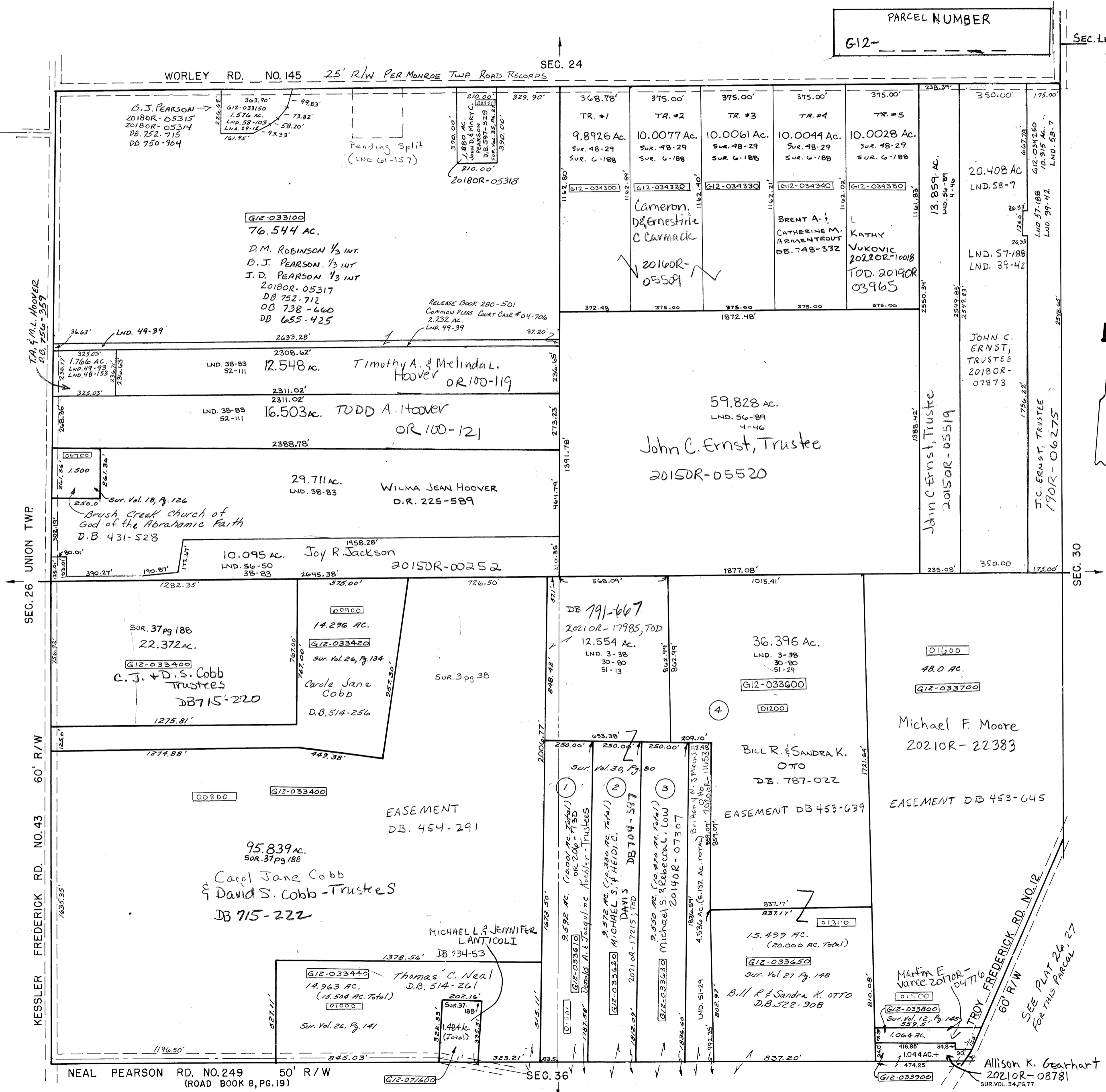
S.W. QUARTER

SUR. VOL. 1, PG. 249
 SUR. VOL. 3, PG. 38
 SUR. VOL. 26, PG. 134
 SUR. VOL. 30, PG. 80
 SUR. VOL. 37, PG. 188

N.W. QUARTER

SUR. VOL. 1, PG. 249
 SUR. VOL. 18, PG. 126
 SUR. VOL. 29, PG. 12
 SUR. VOL. 35, PG. 21
 SUR. VOL. 38, PG. 83
 LND. 48-153
 LND. 49-39
 LND. 49-93
 LND. 52-111
 LND. 56-50
 LND. 58-103

PARCEL NUMBER
 G12-



REVISED:
 6/29/22
 KC

Allison K. Gearhart
 2021OR-08781
 SUR. VOL. 34, PG. 77