

MONROE TWP.

MIAMI COUNTY, OHIO

PLAT 19-A

Section 24, Town 6, Range 5

N.E. Quarter

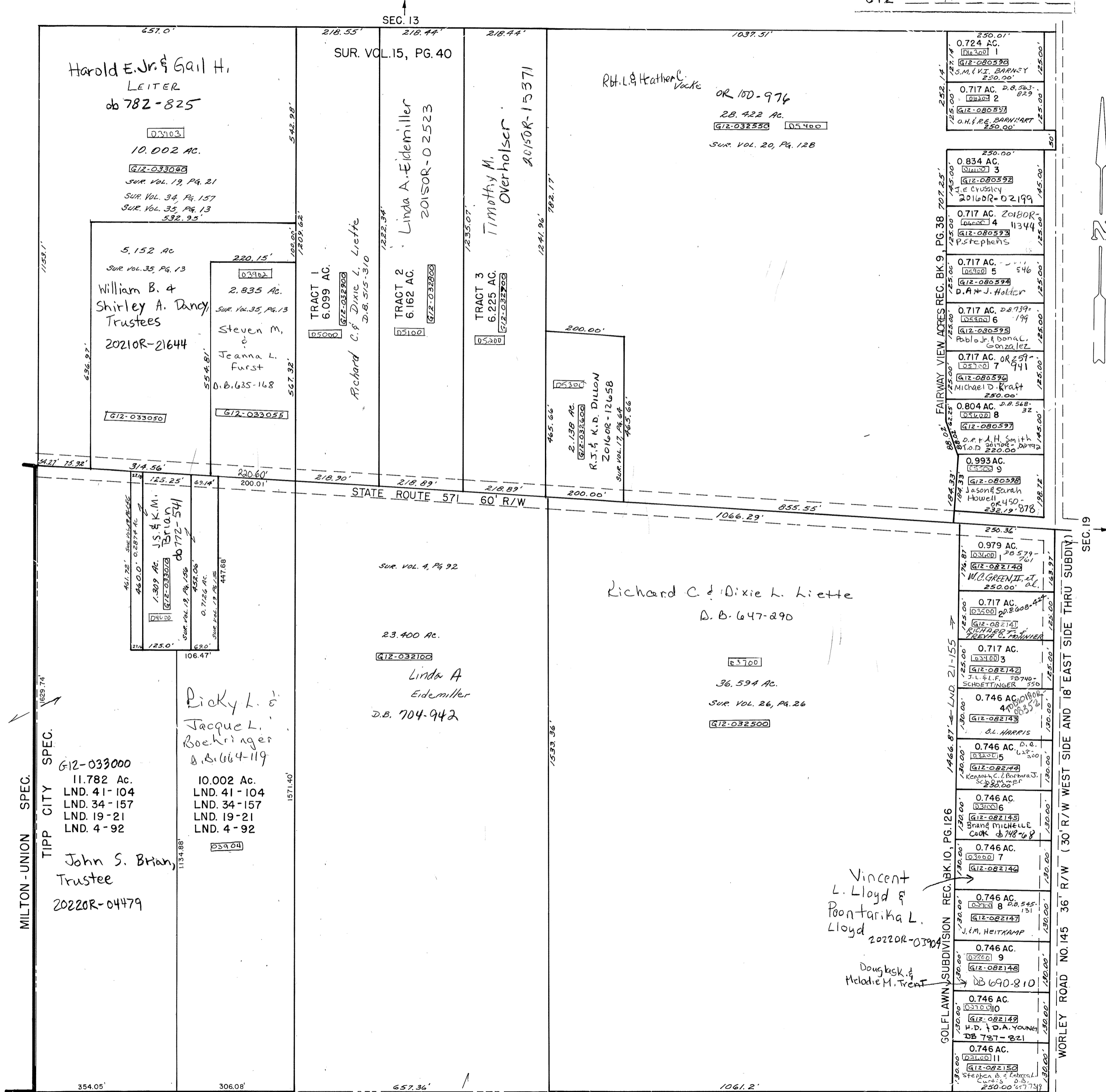
SCALE: 1" = 200'

PARCEL NUMBER
G12-

SURVEYS

SUR. VOL. 4, PG. 92
 SUR. VOL. 15, PG. 40
 SUR. VOL. 17, PG. 64
 SUR. VOL. 19, PG. 21
 SUR. VOL. 19, PG. 156
 SUR. VOL. 20, PG. 128
 SUR. VOL. 26, PG. 26
 SUR. VOL. 34, PG. 157
 SUR. VOL. 35, PG. 13
 LND. 21-155
 LND. 41-104

REC. BK. 9, PG. 38
 REC. BK. 10, PG. 126



MILTON - UNION SPEC.
 TIPP CITY SPEC.
 G12-033000
 11.782 Ac.
 LND. 41-104
 LND. 34-157
 LND. 19-21
 LND. 4-92
 John S. Brian,
 Trustee
 20220R-04479

Richard C. & Dixie L. Liette
 D.B. 647-290
 36.594 Ac.
 SUR. VOL. 26, PG. 26
 G12-032500

Linda A. Eidemiller
 D.B. 704-942
 23.400 Ac.
 G12-032100

William B. & Shirley A. Dancy Trustees
 20210R-21644
 2.835 Ac.
 SUR. VOL. 35, PG. 13
 Steven M. & Jeanna L. Furst
 D.B. 635-168
 5.152 Ac.
 SUR. VOL. 35, PG. 13

Harold E. Jr. & Gail H. LEITER
 db 782-825
 10.002 Ac.
 G12-033000
 SUR. VOL. 19, PG. 21
 SUR. VOL. 34, PG. 157
 SUR. VOL. 35, PG. 13
 532.95

Picky L. & Jacquie L. Boekinger
 D.B. 664-119
 10.002 Ac.
 LND. 41-104
 LND. 34-157
 LND. 19-21
 LND. 4-92

Richard C. & Dixie L. Liette
 D.B. 647-290
 36.594 Ac.
 SUR. VOL. 26, PG. 26
 G12-032500

Vincent L. Lloyd & Poontarika L. Lloyd
 20220R-03904

Douglass & Melodie M. Trent
 DB 690-810

Richard C. & Dixie L. Liette
 D.B. 647-290
 36.594 Ac.
 SUR. VOL. 26, PG. 26
 G12-032500

Linda A. Eidemiller
 D.B. 704-942
 23.400 Ac.
 G12-032100

William B. & Shirley A. Dancy Trustees
 20210R-21644
 2.835 Ac.
 SUR. VOL. 35, PG. 13
 Steven M. & Jeanna L. Furst
 D.B. 635-168
 5.152 Ac.
 SUR. VOL. 35, PG. 13

Harold E. Jr. & Gail H. LEITER
 db 782-825
 10.002 Ac.
 G12-033000
 SUR. VOL. 19, PG. 21
 SUR. VOL. 34, PG. 157
 SUR. VOL. 35, PG. 13
 532.95