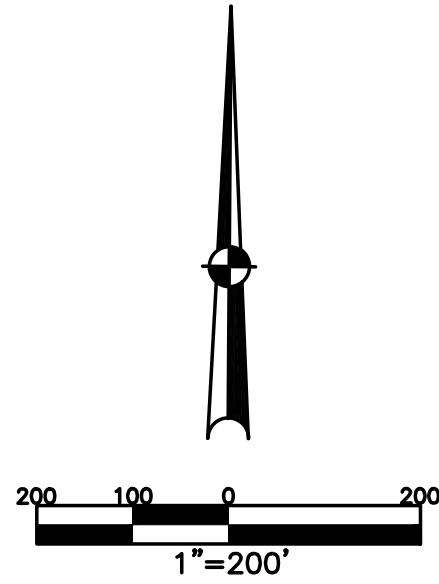


MONROE TWP.
MIAMI COUNTY, OHIO

SECTION 21 TOWN 4 RANGE 6
SOUTHEAST QUARTER

PARCEL NUMBER
G12-_____

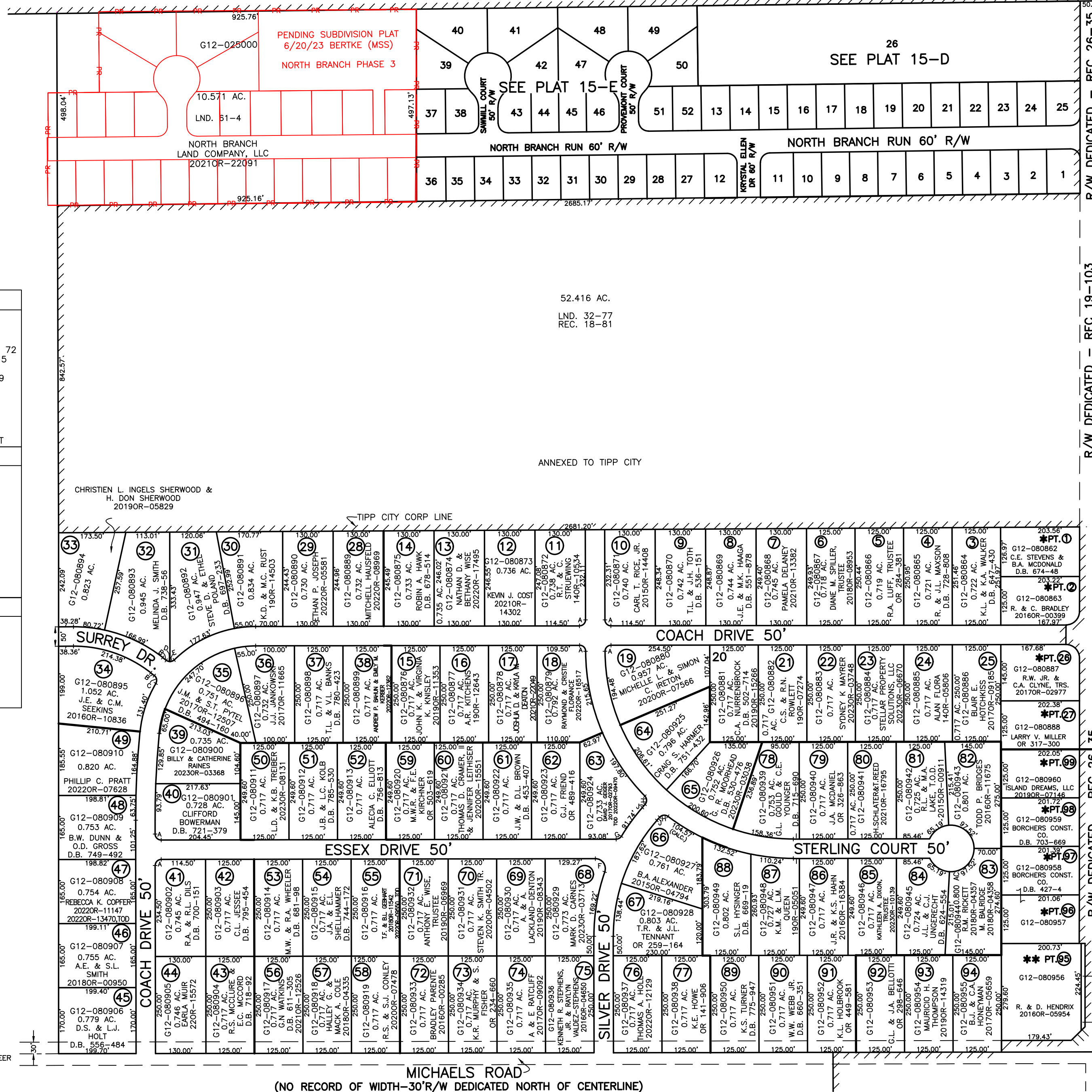
PLAT 15-B



ABBREVIATION LEGEND		
2014OR-07759	=	RECORDER'S DOCUMENT NUMBER
OR 257-619	=	OFFICIAL RECORD 257 PAGE 619
D.B. 613-172	=	DEED BOOK 613, PAGE 172
REC. 15-72	=	RECORDER'S PLAT BOOK 15, PAGE 72
LND. 33-15	=	LAND SURVEY VOLUME 33, PAGE 15
LOT 19-12	=	LOT SURVEY VOLUME 19, PAGE 12
R.R. 8-29	=	ROAD RECORD VOLUME 8, PAGE 29
R/W	=	RIGHT OF WAY
C	=	CENTERLINE
AC.	=	ACRES
TWP.	=	TOWNSHIP
TR.	=	TRACT
⊙	=	LOT CREATED BY RECORDER'S PLAT
LINE LEGEND		
	=	Blow-up Boundary
	=	Property Line
	=	Lot Split Line
	=	Section Line
	=	Centerline
	=	Right-of-Way Line
	=	Corporation Line
SURVEY INDEX		
LND. 3-378	REC. 9-77	REC. 25-2
LND. 18-14	REC. 9-108	RSMD 154
LND. 32-77	REC. 9-120	REC. 25-2
LND. 59-137	REC. 9-130	RSMD 165
LND. 61-4	REC. 9-146	REC. 26-18
	REC. 9-148	REC. 26-35
	REC. 10-16	
	REC. 18-81	

SEGMENT	LENGTH
A	24.35'
B	11.80'
C	22.35'
D	10.33'
E	12.02'
F	48.67'
G	15.97'
H	23.20'
I	15.50'
J	10.85'

BUCKINGHAM SQUARE	
SEC. 1	
REC. 9-77	REC. 25-2
REC. 9-108	RSMD 154
REC. 9-120	REC. 25-2
REC. 9-130	RSMD 165
REC. 9-146	REC. 26-18
REC. 9-148	REC. 26-35
REC. 10-16	
REC. 18-81	
BUCKINGHAM COURT	
SEC. 1	
REC. 9-108	REC. 25-2
LOTS 28-38	
SEC. 2	
REC. 9-120	REC. 25-2
LOTS 39-49	
SEC. 3	
REC. 9-130	REC. 25-2
LOTS 50-58	
SEC. 4	
REC. 9-148	REC. 26-18
LOTS 59-77	
SEC. 5	
REC. 10-16	REC. 26-35
LOTS 78-91	
BUCKINGHAM COURT COMMERCIAL	
REC. 9-146	REC. 26-35
LOTS 92-99	



PREPARED BY: MIAMI COUNTY ENGINEER'S MAP DEPARTMENT
PAUL P. HUELSKAMP, P.E., P.S., COUNTY ENGINEER
DATE: DECEMBER 12, 2014 MB

REVISED: September 19, 2023 APALMER

R/W DEDICATED - REC 26-35

R/W DEDICATED - REC 19-103

R/W DEDICATED - REC 26-35

R/W DEDICATED - REC 26-18

R/W DEDICATED - REC 26-35

COUNTY ROAD 25-A R/W VARIES
CENTERLINE PLAT: REC. 25-2
SEE RSMD 154 FOR R/W

*NEEDS EXCEPTION
**NEEDS 2 EXCEPTIONS

R/W ANNEXED - REC 26-18
R/W DEDICATED - REC 26-35

PT. 65
CITY OF TIPP CITY
2017OR-00090
SEE RSMD 165

MICHAELS ROAD
(NO RECORD OF WIDTH-30'R/W DEDICATED NORTH OF CENTERLINE)