

MONROE TWP.

MIAMI COUNTY, OHIO

PLAT 14-B

Section 20, Town 4, Range 6

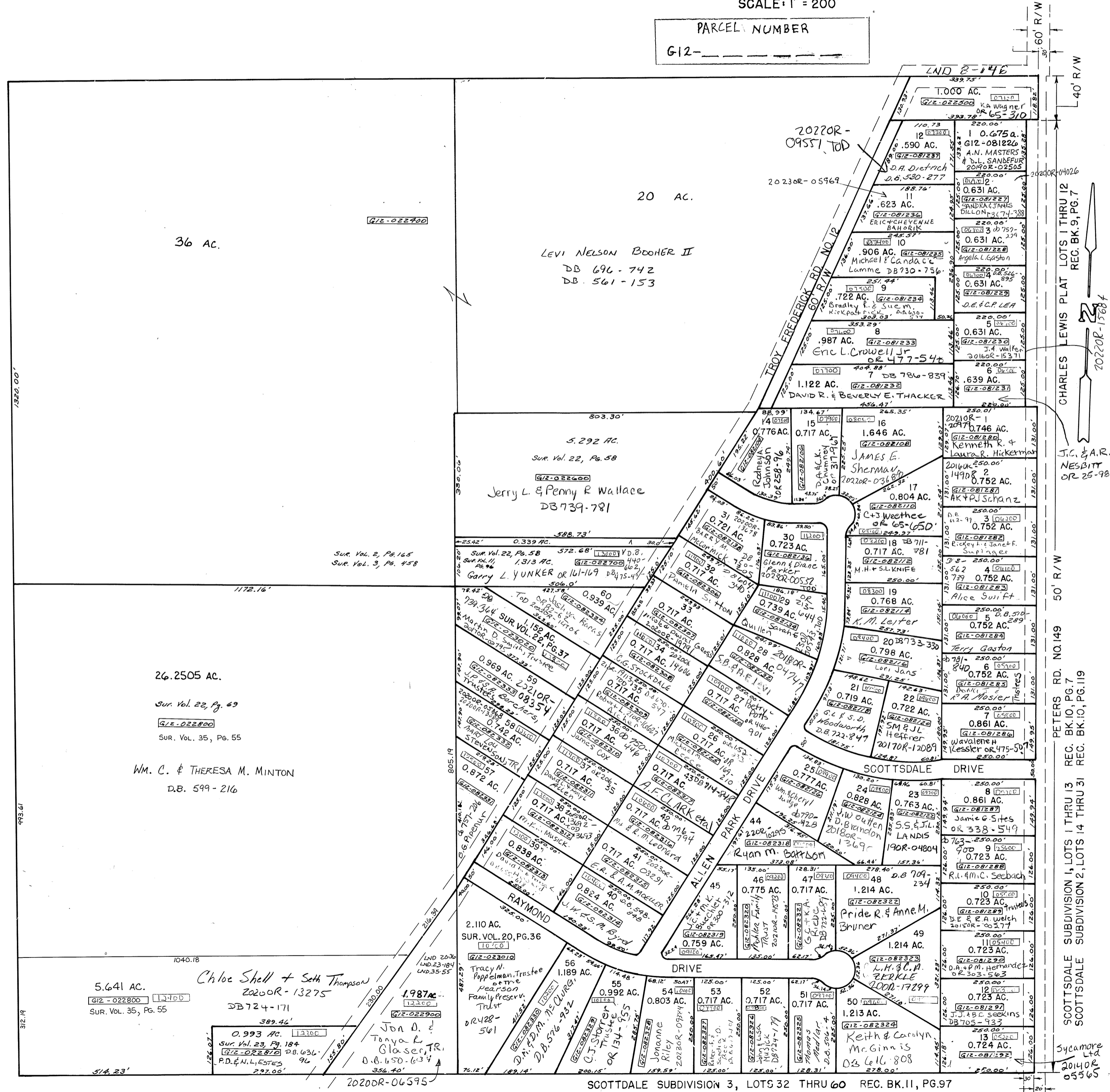
S.W. Quarter SEC. 20

SCALE: 1" = 200'

SURVEYS

- SUR. VOL. 2, PG. 165
- SUR. VOL. 3, PG. 458
- SUR. VOL. 8, PG. 146
- SUR. VOL. 11, PG. 96
- SUR. VOL. 18, PG. 117
- SUR. VOL. 19, PG. 149
- SUR. VOL. 20, PG. 36
- SUR. VOL. 22, PG. 37
- SUR. VOL. 22, PG. 58
- SUR. VOL. 22, PG. 69
- SUR. VOL. 23, PG. 184
- SUR. VOL. 35, PG. 55
- REC. BK. 9, PLAT 7
- REC. BK. 10, PLAT 7
- REC. BK. 10, PLAT 119
- REC. BK. 11, PLAT 97

PARCEL NUMBER
G12-_____



SCOTTSDALE SUBDIVISION 3, LOTS 32 THRU 60 REC. BK. 11, PG. 97

REVISED

8/29/23 G.B.

SUR. Vol. 18, PG. 117
SUR. Vol. 19, PG. 149

60' R/W

40' R/W

CHARLES LEWIS PLAT LOTS 1 THRU 12 REC. BK. 9, PG. 7

J.C. & A.R. NESBITT OR 25-981

50' R/W

PETERS RD. NO. 149 REC. BK. 10, PG. 7

SCOTTSDALE SUBDIVISION 1, LOTS 1 THRU 31 REC. BK. 10, PG. 119

SCOTTSDALE SUBDIVISION 2, LOTS 14 THRU 31 REC. BK. 10, PG. 119

Sycamore Ltd
2014OR-05365