

# MONROE TWP

# MIAMI COUNTY, OHIO

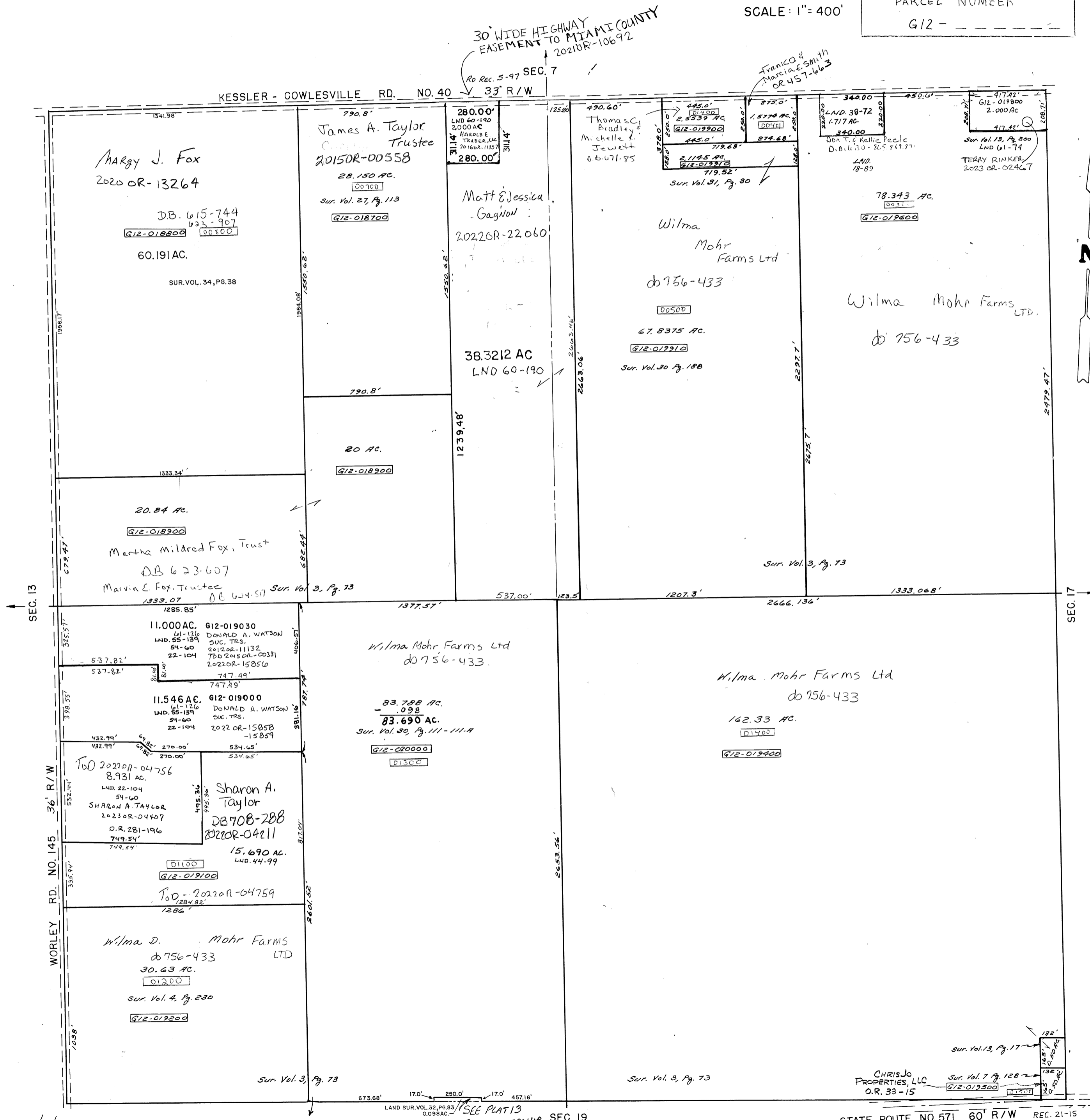
# PLAT 12

## Section 18, Town 4, Range 6

SCALE: 1" = 400'

PARCEL NUMBER  
G12 - - - - -

SURVEYS	
SUR. VOL. 3, PG. 73 SUR. VOL. 7, PG. 128 SUR. VOL. 13, PG. 17	S.E. QUARTER
SUR. VOL. 3, PG. 73 SUR. VOL. 13, PG. 200 SUR. VOL. 18, PG. 89 SUR. VOL. 30, PG. 188 SUR. VOL. 31, PG. 30 LND. 57-90 LND. 60-190	N.E. QUARTER
SUR. VOL. 3, PG. 73 SUR. VOL. 4, PG. 230 SUR. VOL. 22, PG. 104 SUR. VOL. 30, PG. III - IIIA LND. 44-98 LND. 54-60 LND. 55-139	S.W. QUARTER
SUR. VOL. 3, PG. 73 SUR. VOL. 27, PG. 113 LND. 34-38 LND. 57-90	N.W. QUARTER



REVISED 9/7/23 DJ

STATE ROUTE NO. 571 60' R/W CENTERLINE PLAT