

MONROE TWP.  
MIAMI COUNTY, OHIO

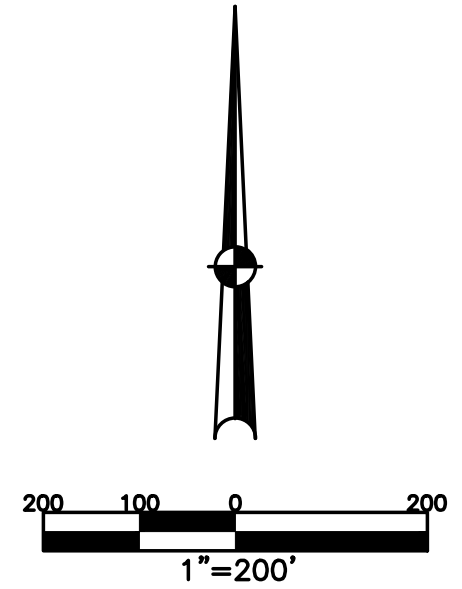
SECTION 15 TOWN 4 RANGE 6  
SW 1/4

PARCEL NUMBER  
G12-\_\_\_\_\_

PLAT 9-A

FLORAL ACRES SUBDIVISION  
REC. 6-111  
LOTS 1-57

\*-NEEDS EXCEPTION



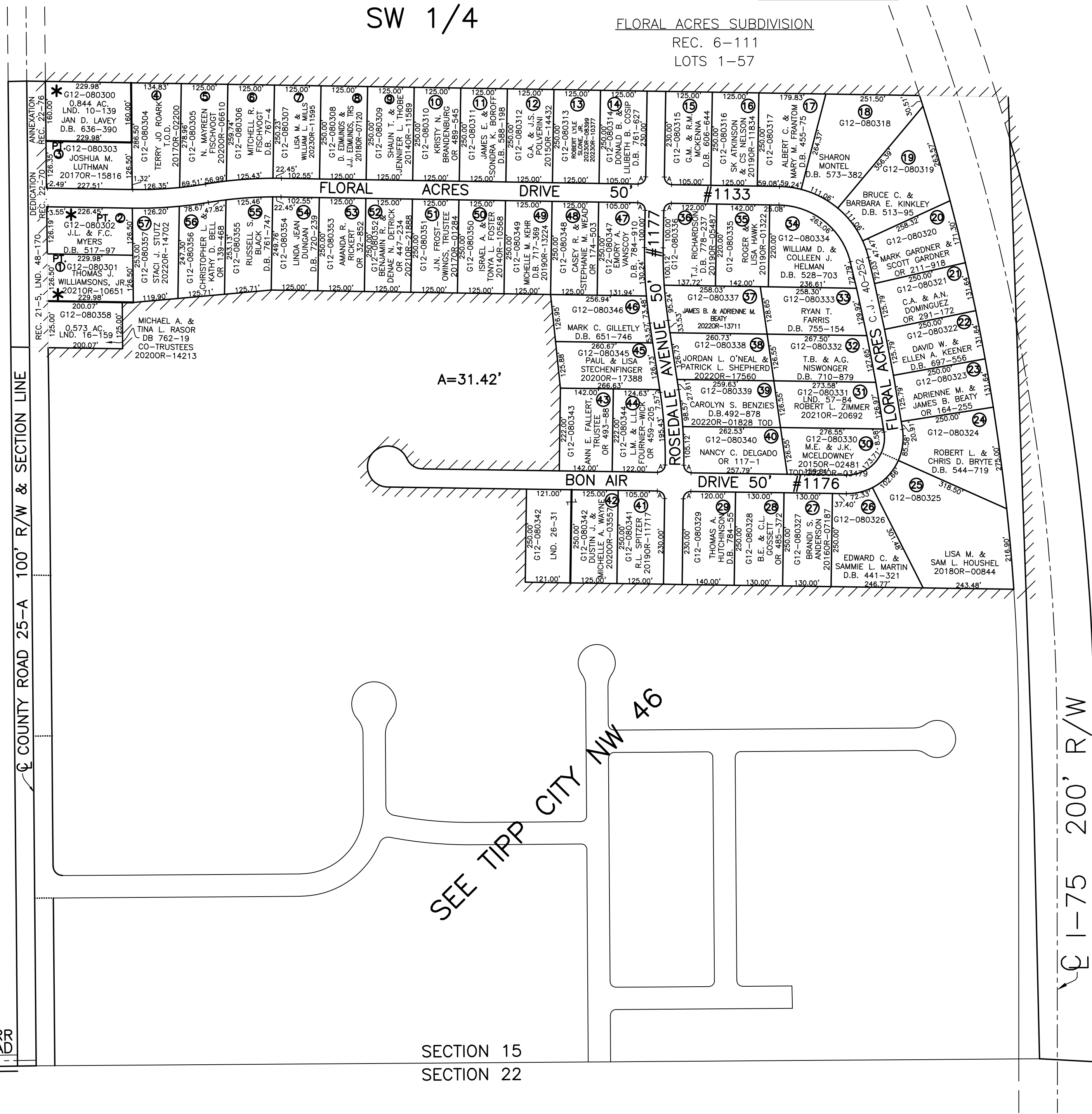
ABBREVIATION LEGEND	
2014OR-07759	= RECORDER'S DOCUMENT NUMBER
OR 257-619	= OFFICIAL RECORD 257 PAGE 619
D.B. 613-172	= DEED BOOK 613, PAGE 172
REC. 15-72	= RECORDER'S PLAT BOOK 15, PAGE 72
LND. 33-15	= LAND SURVEY VOLUME 33, PAGE 15
LOT 19-12	= LOT SURVEY VOLUME 19, PAGE 12
R.R. 8-29	= ROAD RECORD VOLUME 8, PAGE 29
R/W	= RIGHT OF WAY
CL	= CENTERLINE
AC.	= ACRES
TWP.	= TOWNSHIP
TR.	= TRACT
②	= LOT CREATED BY RECORDER'S PLAT

LINE LEGEND	
	Blow-up Boundary
	Property Line
	Lot Split Line
	Section Line
	Centerline
	Right-of-Way Line
	Corporation Line

SURVEY INDEX	
LND. 10-139	REC. 6-111
LND. 11-115	REC. 21-5
LND. 12-67	REC. 22-70
LND. 16-159	REC. 22-76
LND. 26-31	
LND. 57-84	



PREPARED BY: MIAMI COUNTY ENGINEER'S MAP DEPARTMENT  
PAUL P. HUELSKAMP, P.E., P.S., COUNTY ENGINEER  
DATE: MARCH 21, 2018 MDB

REVISED: October 23, 2023 APALMER

SECTION 15  
SECTION 22