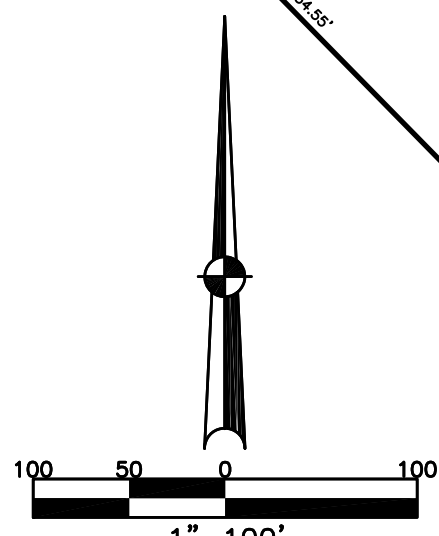
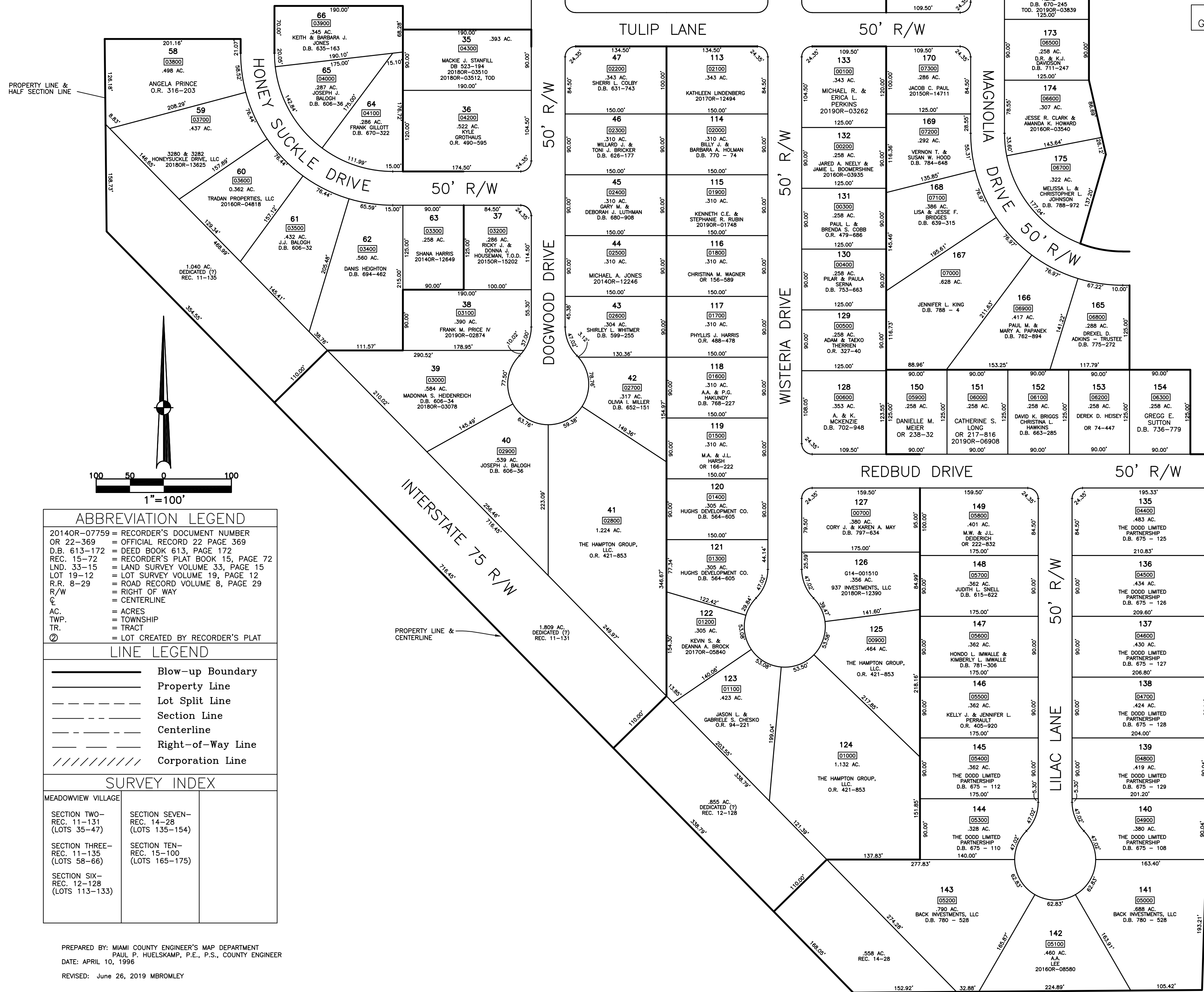


SECTION 9 TOWN 4 RANGE 6

MONROE TOWNSHIP
MIAMI COUNTY, OHIO

PLAT 3F

SMDA NUMBER
G14-M0003F_



ABBREVIATION LEGEND	
2014OR-07759	= RECORDER'S DOCUMENT NUMBER
OR 22-369	= OFFICIAL RECORD 22 PAGE 369
D.B. 613-172	= DEED BOOK 613, PAGE 172
REC. 15-72	= RECORDER'S PLAT BOOK 15, PAGE 72
LND. 33-15	= LAND SURVEY VOLUME 33, PAGE 15
LOT 19-12	= LOT SURVEY VOLUME 19, PAGE 12
R.R. 8-29	= ROAD RECORD VOLUME 8, PAGE 29
R/W	= RIGHT OF WAY
C	= CENTERLINE
AC.	= ACRES
TWP.	= TOWNSHIP
TR.	= TRACT
Ⓢ	= LOT CREATED BY RECORDER'S PLAT

LINE LEGEND	
	Blow-up Boundary
	Property Line
	Lot Split Line
	Section Line
	Centerline
	Right-of-Way Line
	Corporation Line

SURVEY INDEX		
MEADOWVIEW VILLAGE		
SECTION TWO- REC. 11-131 (LOTS 35-47)	SECTION SEVEN- REC. 14-28 (LOTS 135-154)	
SECTION THREE- REC. 11-135 (LOTS 58-66)	SECTION TEN- REC. 15-100 (LOTS 165-175)	
SECTION SIX- REC. 12-128 (LOTS 113-133)		

PREPARED BY: MIAMI COUNTY ENGINEER'S MAP DEPARTMENT
PAUL P. HUELSKAMP, P.E., P.S., COUNTY ENGINEER
DATE: APRIL 10, 1996
REVISED: June 26, 2019 MBROMLEY