

MONROE TWP.

MIAMI COUNTY, OHIO

PLAT 4-C

Section 10, Town 4, Range 6

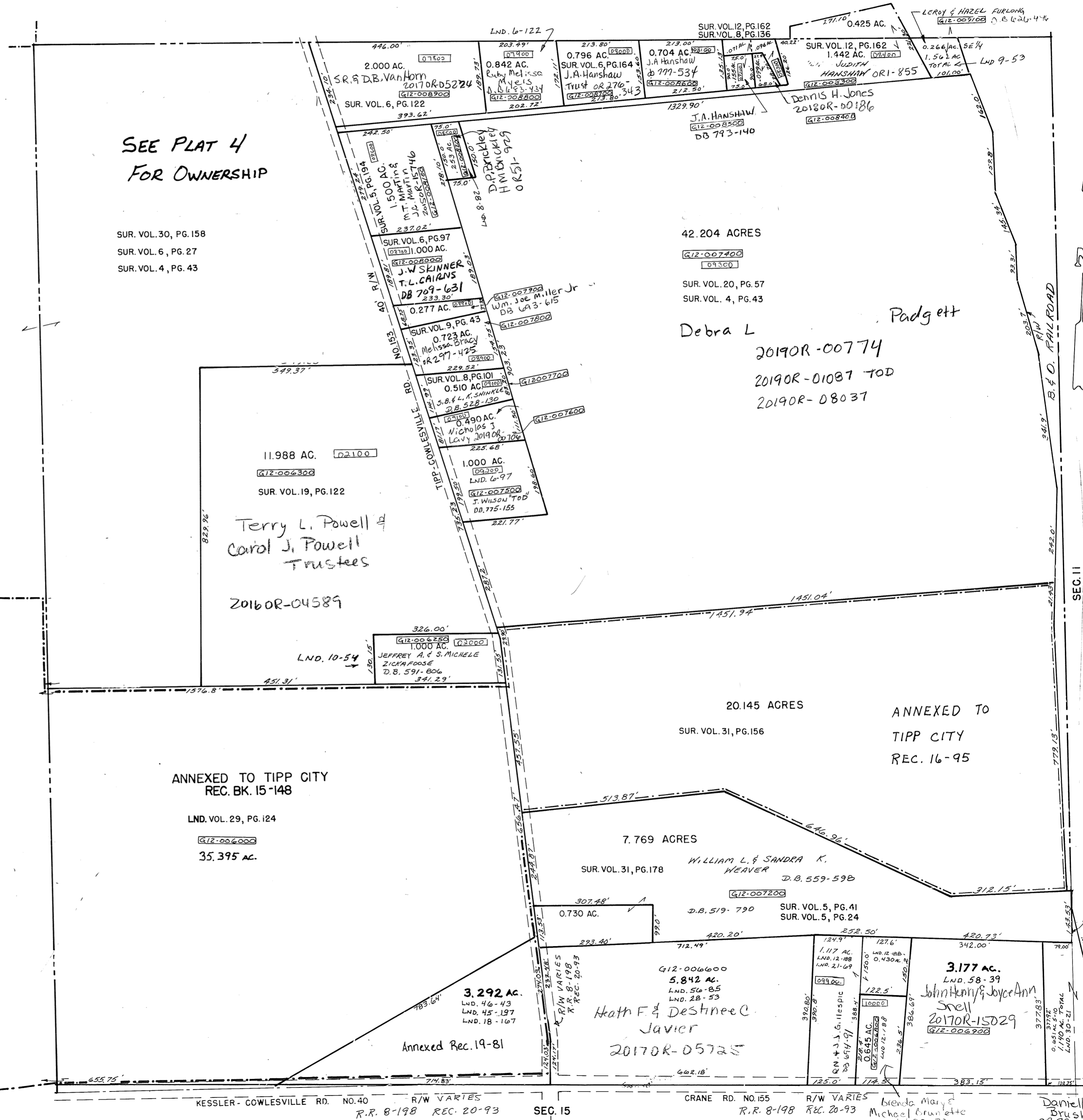
S.E. Quarter

SMDA NUMBER
G12-M0004C-

Scale: 1" = 200'

SURVEYS

- SUR. VOL. 2, PG. 142
- SUR. VOL. 3, PG. 349
- SUR. VOL. 4, PG. 43
- SUR. VOL. 4, PG. 243
- SUR. VOL. 5, PG. 24
- SUR. VOL. 5, PG. 41
- SUR. VOL. 5, PG. 194
- SUR. VOL. 6, PG. 27
- SUR. VOL. 6, PG. 97
- SUR. VOL. 6, PG. 122
- SUR. VOL. 6, PG. 164
- SUR. VOL. 8, PG. 82
- SUR. VOL. 8, PG. 101
- SUR. VOL. 8, PG. 136
- SUR. VOL. 9, PG. 43
- SUR. VOL. 9, PG. 53
- SUR. VOL. 10, PG. 54
- SUR. VOL. 12, PG. 162
- SUR. VOL. 12, PG. 188
- SUR. VOL. 18, PG. 167
- SUR. VOL. 19, PG. 122
- SUR. VOL. 20, PG. 57
- SUR. VOL. 21, PG. 69
- SUR. VOL. 28, PG. 53
- SUR. VOL. 29, PG. 124
- SUR. VOL. 30, PG. 21
- SUR. VOL. 30, PG. 158
- SUR. VOL. 31, PG. 156
- SUR. VOL. 31, PG. 178
- LND 45-169
- LND 45-197
- LND 46-43
- Rec. 19-81 Annexation
- Rec. 15-148 Annexation
- Rec. 16-95 Annexation
- LND. 56-85
- LND. 58-39



SEE PLAT 4
FOR OWNERSHIP

SUR. VOL. 30, PG. 158
SUR. VOL. 6, PG. 27
SUR. VOL. 4, PG. 43

42.204 ACRES

G12-007400
09300

SUR. VOL. 20, PG. 57
SUR. VOL. 4, PG. 43

Debra L

Padgett

20190R-00774
20190R-01087 TOD
20190R-08037

11.988 AC.
G12-006300
SUR. VOL. 19, PG. 122
Terry L. Powell &
Carol J. Powell
Trustees

20160R-04589

LND. 10-54
JEFFREY A. & S. MICHELE
ZICKA ROOSE
D.B. 591-806
341.29'

ANNEXED TO TIPP CITY
REC. BK. 15-148

LND. VOL. 29, PG. 124
G12-006000
35.395 AC.

20.145 ACRES
SUR. VOL. 31, PG. 156

ANNEXED TO
TIPP CITY
REC. 16-95

7.769 ACRES

SUR. VOL. 31, PG. 178
WILLIAM L. & SANDRA K.
WEAVER
D.B. 559-59B
G12-007200
D.B. 519-790
SUR. VOL. 5, PG. 41
SUR. VOL. 5, PG. 24

3.292 AC.
LND. 46-43
LND. 45-197
LND. 18-167

Annexed Rec. 19-81

G12-006000
5.842 AC.
LND. 56-85
LND. 28-53
Heath F. & Destinee C.
Javier
20170R-05725

3.177 AC.
LND. 58-39
John Henry & Joyce Ann
Swell
20170R-15029
G12-006900

KESSLER-COWLESVILLE RD. NO. 40 R/W VARIES
R.R. 8-198 REC. 20-93 SEC. 15

CRANE RD. NO. 155 R/W VARIES
R.R. 8-198 REC. 20-93

blende Mary &
Michael Brunette
D.B. 688-23
Danielle
Brush
OR 290-20

REVISED 9-27-2017