

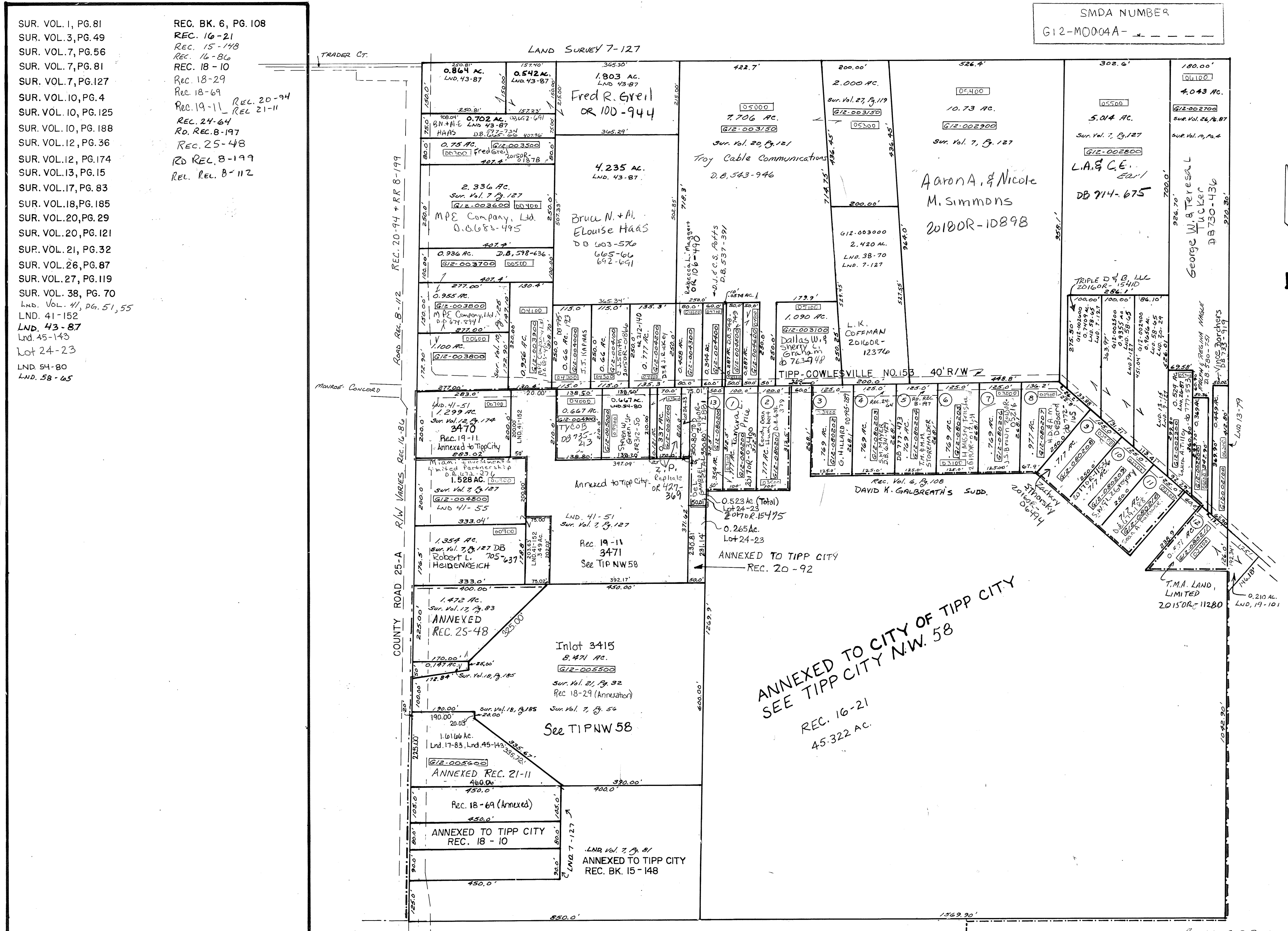
SCALE: 1" = 200'

SURVEYS

- SUR. VOL. 1, PG. 81
- SUR. VOL. 3, PG. 49
- SUR. VOL. 7, PG. 56
- SUR. VOL. 7, PG. 81
- SUR. VOL. 7, PG. 127
- SUR. VOL. 10, PG. 4
- SUR. VOL. 10, PG. 125
- SUR. VOL. 10, PG. 188
- SUR. VOL. 12, PG. 36
- SUR. VOL. 12, PG. 174
- SUR. VOL. 13, PG. 15
- SUR. VOL. 17, PG. 83
- SUR. VOL. 18, PG. 185
- SUR. VOL. 20, PG. 29
- SUR. VOL. 20, PG. 121
- SUR. VOL. 21, PG. 32
- SUR. VOL. 26, PG. 87
- SUR. VOL. 27, PG. 119
- SUR. VOL. 38, PG. 70
- LND. VOL. 41, PG. 51, 55
- LND. 43-87
- Lnd. 45-145
- Lot 24-23
- LND. 54-80
- LND. 58-65

- REC. BK. 6, PG. 108
- REC. 16-21
- REC. 15-148
- REC. 16-86
- REC. 18-10
- REC. 18-29
- REC. 18-69
- REC. 19-11 REC. 20-94
- REC. 21-11
- REC. 24-64
- RD. REC. 8-197
- REC. 25-48
- RD. REC. 8-199
- REL. REC. 8-112

SMDA NUMBER
G12-M0004A-



ANNEXED TO CITY OF TIPP CITY
SEE TIPP CITY NW. 58
REC. 16-21
45.322 AC.