

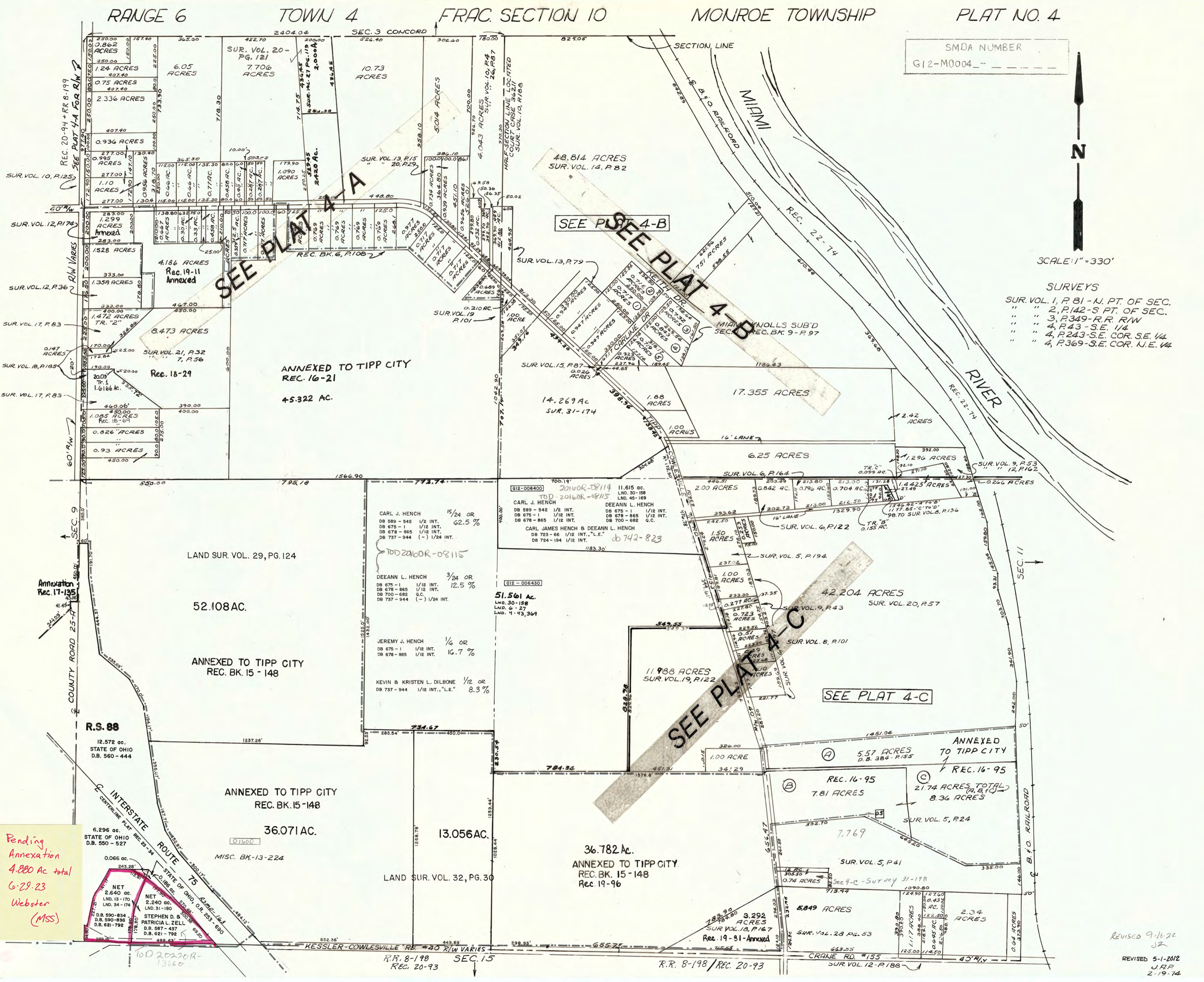
SMDA NUMBER
G12-M0004



SCALE: 1" = 330'

SURVEYS

- SUR. VOL. 1, P. 81 - N. PT. OF SEC.
- " " 2, P. 142 - S. PT. OF SEC.
- " " 3, P. 349 - R.R. R/W
- " " 4, P. 43 - S.E. 1/4
- " " 4, P. 243 - S.E. COR. S.E. 1/4
- " " 4, P. 369 - S.E. COR. N.E. 1/4



SEE PLAT 4-A

SEE PLAT 4-B

SEE PLAT 4-B

SEE PLAT 4-C

Pending
Annexation
4.880 Ac total
6.29.23
Webster
(MSS)

REVISED 9-16-22
J.F.P.
2-19-74

CARL J. HENCH 15/24 OR
DB 589 - 542 1/2 INT. 62.5 %
DB 675 - 1 1/12 INT.
DB 678 - 865 1/12 INT.
DB 737 - 944 (-) 1/24 INT.

TOD-2016OR-08115

DEEANN L. HENCH 3/24 OR
DB 675 - 1 1/12 INT. 12.5 %
DB 678 - 865 1/12 INT.
DB 700 - 682 Q.C.
DB 737 - 944 (-) 1/24 INT.

JEREMY J. HENCH 1/4 OR
DB 675 - 1 1/12 INT. 16.7 %
DB 678 - 865 1/12 INT.

KEVIN & KRISTEN L. DILBONE 1/12 OR
DB 737 - 944 1/12 INT., "L.E." 8.3 %

612-006400 2016OR-08114 11.615 ac.
LND. 30-158
LND. 45-169
TOD-2016OR-08115
CARL J. HENCH DEEANN L. HENCH
DB 589 - 542 1/2 INT. DB 675 - 1 1/12 INT.
DB 675 - 1 1/12 INT. DB 678 - 865 1/12 INT.
DB 678 - 865 1/12 INT. DB 700 - 682 Q.C.
CARL JAMES HENCH & DEEANN L. HENCH
DB 723 - 66 1/12 INT., "L.E."
DB 724 - 194 1/12 INT. 6742-823

612-006430
51.561 Ac.
LND. 30-158
LND. 4-27
LND. 4-43, 369

R.S. 88
12,572 ac.
STATE OF OHIO
D.B. 560 - 444

6.296 ac.
STATE OF OHIO
D.B. 550 - 527

NET
2,640 ac.
LND. 13-170
LND. 34-174
D.B. 590-834
D.B. 590-836
D.B. 621-792
STEPHEN D. & PATRICIA L. ZELL
D.B. 587 - 437
D.B. 621 - 792
D.B. 621 - 792

LAND SUR. VOL. 29, PG. 124

52.108 AC.

ANNEXED TO TIPP CITY
REC. BK. 15 - 148

ANNEXED TO TIPP CITY
REC. BK. 15-148

36.071 AC.

13.056 AC.

LAND SUR. VOL. 32, PG. 30

36.782 Ac.
ANNEXED TO TIPP CITY
REC. BK. 15 - 148
Rec. 19-96

42.204 ACRES
SUR. VOL. 20, P. 57

5.57 ACRES
D.B. 384 - P. 155

REC. 16-95
7.81 ACRES

21.74 ACRES TOTAL
(A, B, C)
8.36 ACRES

7.769

5.849 ACRES

3.292 ACRES
SUR. VOL. 18, P. 167
Rec. 19-81-Annexed

2.34 ACRES

0.64 ACRES

