

MONROE TOWNSHIP
MIAMI COUNTY, OHIO

SECTION 9 TOWN 4 RANGE 6
PT. NORTHEAST QUARTER

PLAT 3-H

PARCEL NUMBER
G14-_____

REC. 20-94 ROAD RECORD 8-199

COUNTY ROAD 25-A

LINE LEGEND

- Blow-up Boundary
- Property Line
- Lot Split Line
- Section Line
- Centerline
- Right-of-Way Line
- Corporation Line

ABBREVIATION LEGEND

- 20140R-07759 = RECORDER'S DOCUMENT NUMBER
- OR 104-922 = OFFICIAL RECORD 104 PAGE 922
- D.B. 613-172 = DEED BOOK 613, PAGE 172
- REC. 15-72 = RECORDER'S PLAT BOOK 15, PAGE 72
- LAND. 33-15 = LAND SURVEY VOLUME 33, PAGE 15
- LOT 19-12 = LOT SURVEY VOLUME 19, PAGE 12
- R.R. 8-29 = ROAD RECORD VOLUME 8, PAGE 29
- R/W = RIGHT OF WAY
- CL = CENTERLINE
- AC. = ACRES
- TR. = TRACT
- ② = LOT CREATED BY RECORDER'S PLAT

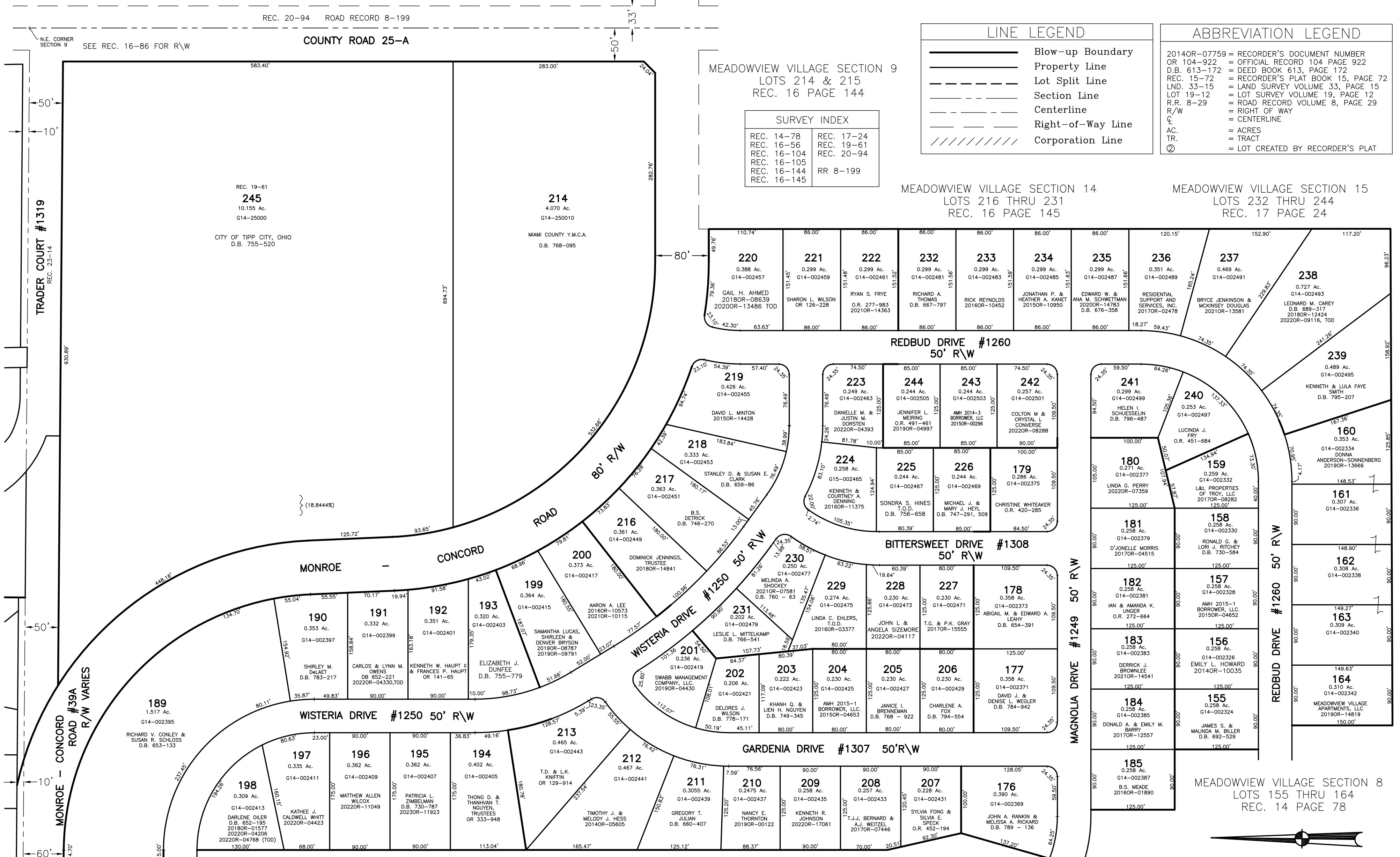
SURVEY INDEX

REC. 14-78	REC. 17-24
REC. 16-56	REC. 19-61
REC. 16-104	REC. 20-94
REC. 16-105	
REC. 16-144	RR 8-199
REC. 16-145	

MEADOWVIEW VILLAGE SECTION 9
LOTS 214 & 215
REC. 16 PAGE 144

MEADOWVIEW VILLAGE SECTION 14
LOTS 216 THRU 231
REC. 16 PAGE 145

MEADOWVIEW VILLAGE SECTION 15
LOTS 232 THRU 244
REC. 17 PAGE 24

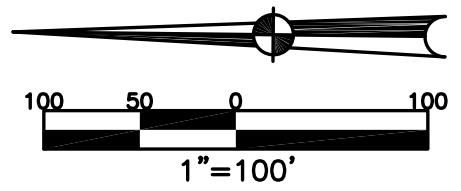


MEADOWVIEW VILLAGE SECTION 12
LOTS 189 THRU 198
REC. 16 PAGE 104

MEADOWVIEW VILLAGE SECTION 13
LOTS 199 THRU 213
REC. 16 PAGE 105

MEADOWVIEW VILLAGE SECTION 11
LOTS 176 THRU 185
REC. 16 PAGE 56

MEADOWVIEW VILLAGE SECTION 8
LOTS 155 THRU 164
REC. 14 PAGE 78



PREPARED BY: MIAMI COUNTY ENGINEER'S MAP DEPARTMENT
DATE: APRIL, 1993
REVISED: October 30, 2023 DJACOUEMIN