

# MONROE TWP.

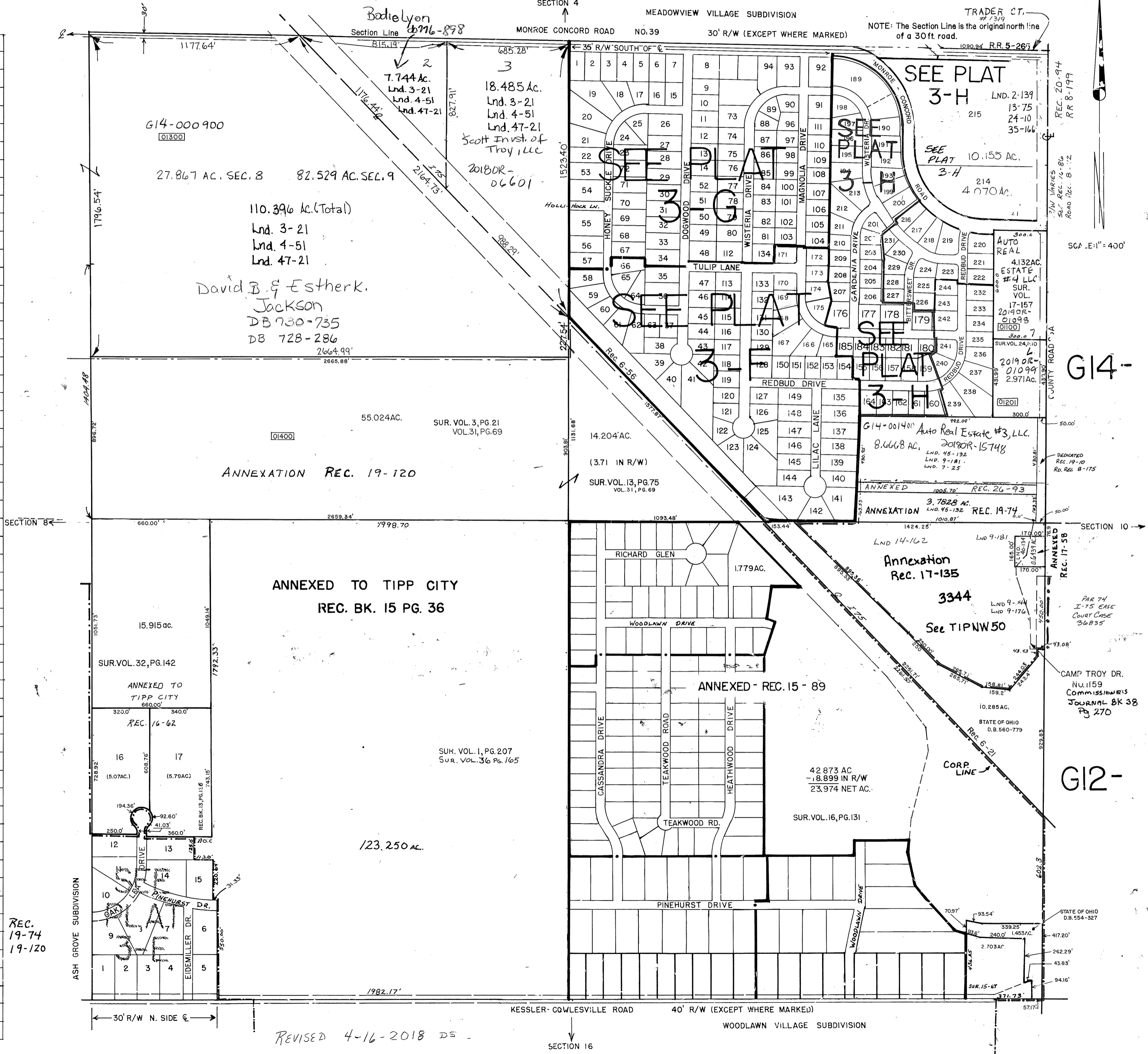
# MIAMI COUNTY, OHIO

# PLAT NO. 3

## Section 9, Town 4, Range 6

SMDA NUMBER  
G12  
G14 - MO003-01300

VOL. NO. - PG. NO.	DISCRIPTION
<b>LAND SURVEYS - N.E. Quarter</b>	
1 - 207	entire section
2 - 139	Monroe-Concord
7 - 25	25A
9 - 181	25A
17 - 157	25A
24 - 10	Monroe-Concord
13 - 75	I-75
35 - 166	
45 - 132	Rec 19-10
<b>RECORDERS BOOK - N.E. Quarter</b>	
6 - 21	25A
6 - 56	25A
11 - 65	Meadowview #1
11 - 131	" #2
11 - 135	" #3
12 - 60	" #4
12 - 95	" #5
12 - 128	" #6
14 - 28	" #7
15 - 100	" #10
<b>LAND SURVEYS - S.E. Quarter</b>	
1 - 207	entire section
4 - 437	Camp Troy intersection
8 - 191	Kessler-Cowlesville
9 - 42	" "
9 - 144	25A
10 - 72	Kessler-Cowlesville
16 - 131	Camp Troy intersection
12 - 181	Kessler-Cowlesville
15 - 67	" "
14 - 162	25A
29 - 117	Sherlynn Drive
40 - 134	25A
<b>RECORDERS BOOK - S.E. Quarter</b>	
9 - 26	Woodlawn Village #1
9 - 115	" #2
6 - 21	25A
6 - 56	25A
11 - 36	Woodlawn Village #3
12 - 63	" #4
12 - 119	" #5
12 - 120	" #6
40 - 134	25A
<b>LAND SURVEYS - S.W. Quarter</b>	
<b>RECORDERS BOOK - S.W. Quarter</b>	
11 - 34	Ash Grove Subdivision #1
11 - 100	" #2
13 - 135	" #3
<b>LAND SURVEYS - N.W. Quarter</b>	
3 - 21	South Central Part
4 - 51	" "
31 - 69	South Part
32 - 142	N.W. PART
47 - 21	N. Half of NW Qtr.



REVISED 4-16-2018 DS