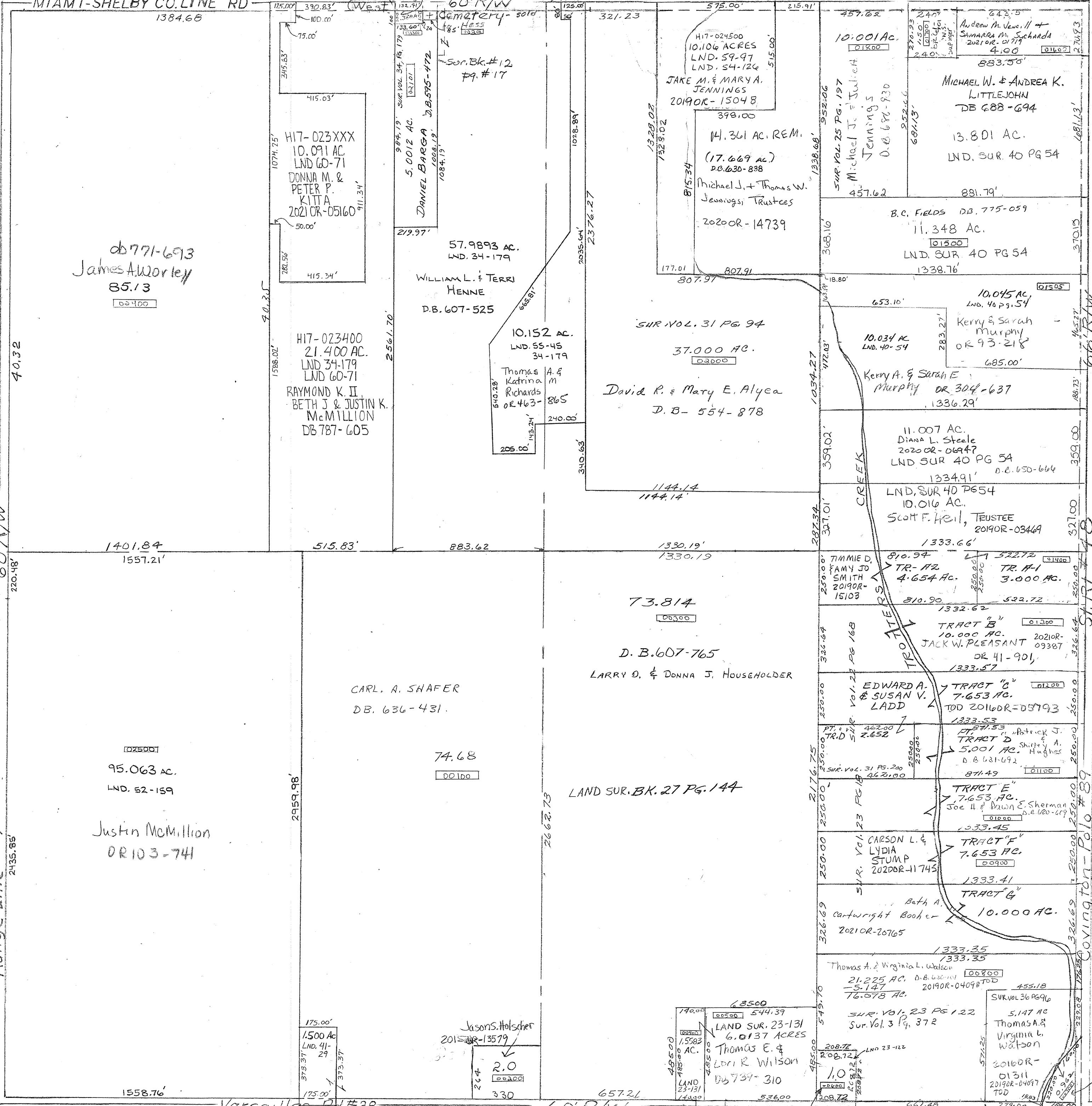


MIAMI-SHELBY CO. LINE RD

60' R/W



Surveys +
 Vol. 3 page
 Vol. 4 page
 Vol. 12
 Vol. 20 pg.

LND. 60-71 NW 1/4
 LND. 34-179 NW 1/4

Range Line #9

60' R/W

db 771-693
 James Worley
 85.13
 02400

02500
 95.063 ac.
 LND. 52-159

Justin McMillion
 OR 103-744

175.00'
 1500 AC
 LND. 41-29

Jason S. Holscher
 2015 OR-13579
 2.0
 00200

485.00
 15582 AC.
 LAND SUR. 23-131
 6.0137 ACRES
 Thomas E. & Lori R. Wilson
 DB 739-310

549.70
 21.225 AC. D.B. 630-101
 5.147
 76.078 AC.
 SUR. VOL. 23 PG 122
 Sur. Vol. 3 Pg. 372

5147 AC
 Thomas A. & Virginia L. Watson
 2016 OR-01311
 2019 OR-04097
 TOD

PARCEL NUMBER
 H17-

Rec. Vol. 5 Pg. 75
 Rec. Vol. 8 Pg. 34

15 SEC. 32

Covington - Polo #89

Vol 20 Pg 123
 KT Rentals OR 461-98

REVISED 12/12/2021

60' R/W
 SEC. 6

J. C. & A. WRIGHT
 DB. 715-010