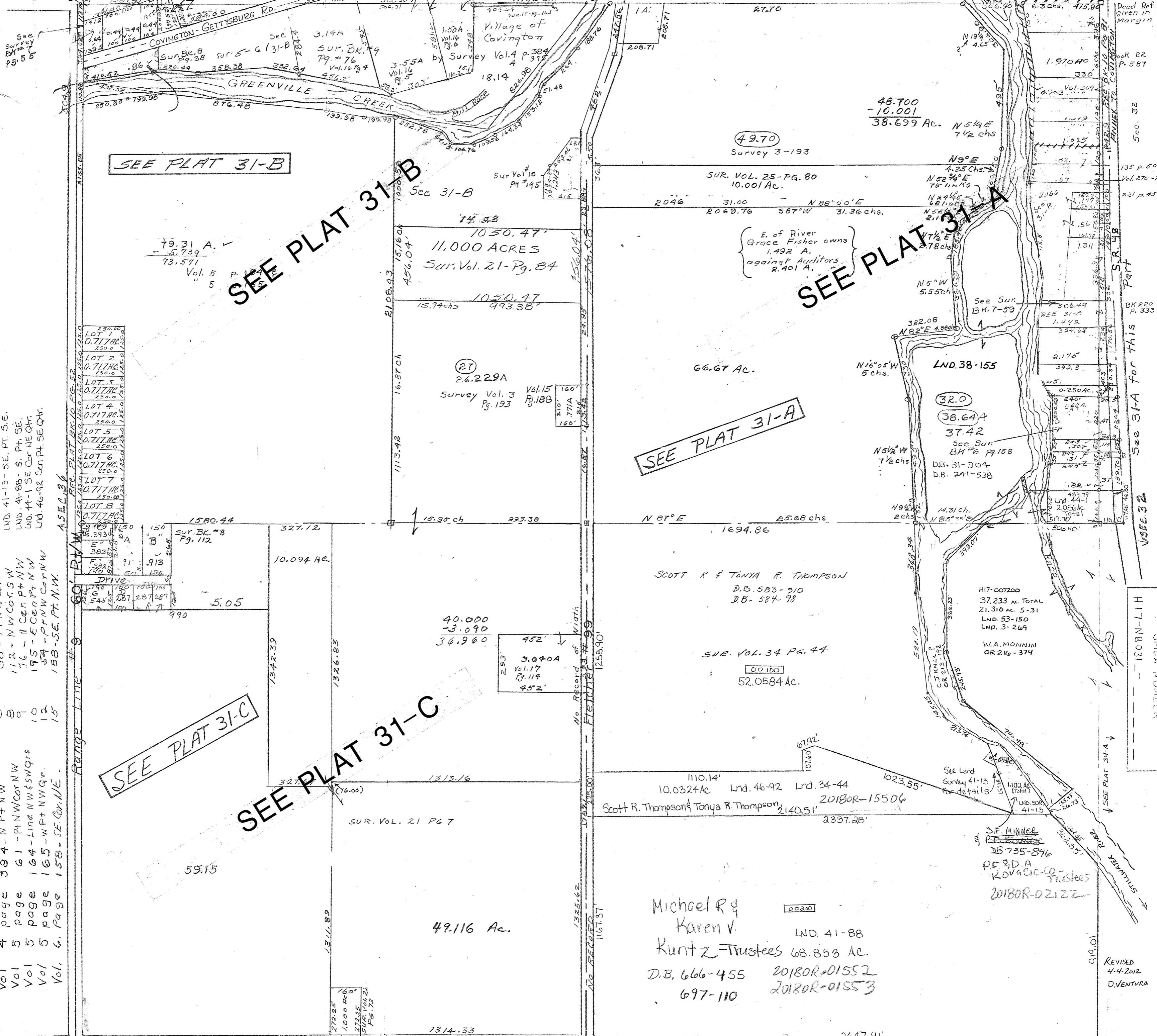


Range 5 Town 8 Section 31 Newberry Township



- Vol. 16 Pg. 4 - N. Pt. N.W.  
 " 16 " 5 - N. Pt. N.W.  
 " 16 " 6 - N. Pt. N.W.  
 " 17 " 11 - N. Pt. S.W.  
 LND. 41-13 - S.E. PT. S.E.  
 LND. 4-88 - S. Pt. S.E.  
 LND. 44-1 SE COR NE QTR.  
 LND. 46-92 Cen Pt. SE QTR.
- Vol. 2 - Pg. 185 - Line NW. QV  
 55 - NW COR NW  
 54 - E COR P+E  
 38 - P+NW COR W  
 112 - NW COR SW  
 176 - N Cen Pt NW  
 195 - E Cen Pt NW  
 54 - P+NW COR NW  
 188 - S.E. PT. N.W.
- Vol. 2 - Pg. 7  
 7  
 8  
 9  
 10  
 12  
 15
- Vol. 193 Cen Pt. N 1/2  
 2691 - NE PT. SE  
 375 - NW PT NW  
 394 - N PT NW  
 61 - P+NW COR NW  
 164 - Line NW SW qtrs  
 165 - W PT NW qtr  
 158 - S.E. Cor. N.E.
- Survey # +  
 Vol 3 page 193  
 Vol 3 page 2691-NE PT. SE  
 Vol 4 page 375-NW PT NW  
 Vol 4 page 394-N PT NW  
 Vol 5 page 61-P+NW COR NW  
 Vol 5 page 164-Line NW SW qtrs  
 Vol 5 page 165-W PT NW qtr  
 Vol. 6 Page 158-S.E. Cor. N.E.

SEE PLAT 31-B

SEE PLAT 31-B

SEE PLAT 31-A

SEE PLAT 31-A

SEE PLAT 31-C

SEE PLAT 31-C

See 31-A for this Part

SMCA NUMBER H17-18031

REVISED 4-4-2012 D.VENTURA