

SECTION 9 & 16
TOWN 6
RANGE 5

VILLAGE OF WEST MILTON
MIAMI COUNTY, OHIO

PLAT N 74
SMDA NUMBER
L39-NH074-_-_-

SEE PLAT N 75 FOR THIS AREA

SEE PLAT N 75 FOR THIS AREA

ANNEXATION
LOTS 1689-1698
REC. 20-82

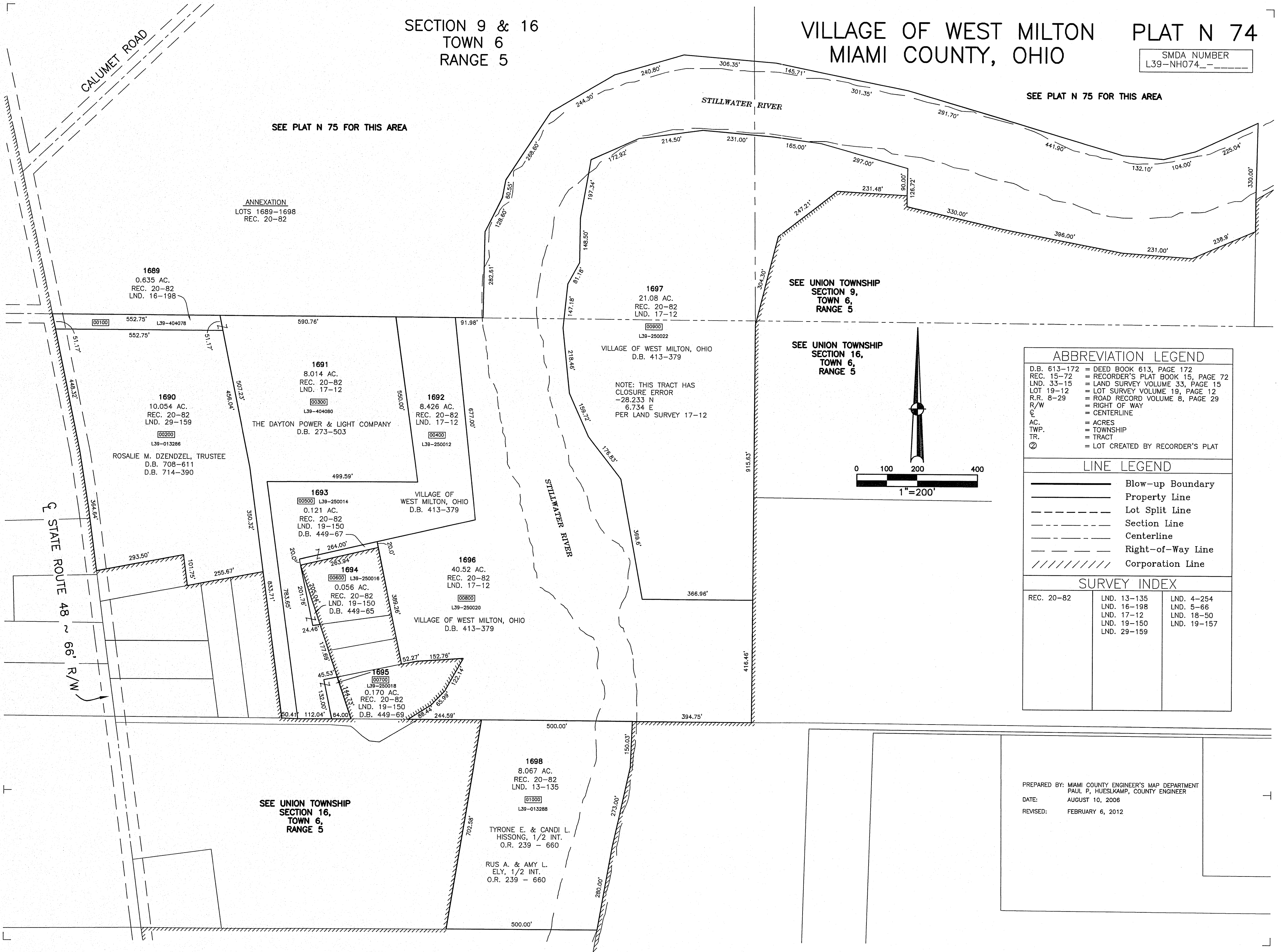
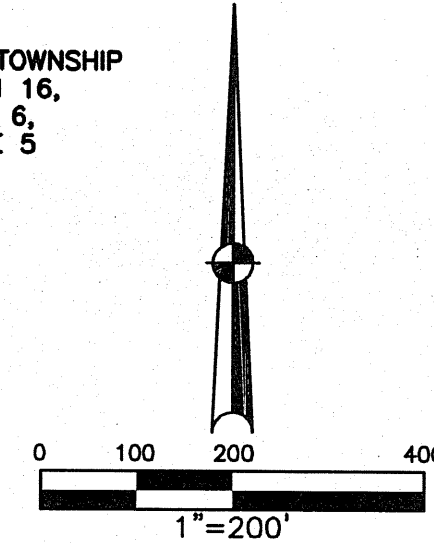
SEE UNION TOWNSHIP
SECTION 9,
TOWN 6,
RANGE 5

SEE UNION TOWNSHIP
SECTION 16,
TOWN 6,
RANGE 5

ABBREVIATION LEGEND	
D.B. 613-172	= DEED BOOK 613, PAGE 172
REC. 15-72	= RECORDER'S PLAT BOOK 15, PAGE 72
LND. 33-15	= LAND SURVEY VOLUME 33, PAGE 15
LOT 19-12	= LOT SURVEY VOLUME 19, PAGE 12
R.R. 8-29	= ROAD RECORD VOLUME 8, PAGE 29
R/W	= RIGHT OF WAY
C	= CENTERLINE
AC.	= ACRES
TWP.	= TOWNSHIP
TR.	= TRACT
Ⓢ	= LOT CREATED BY RECORDER'S PLAT

LINE LEGEND	
	Blow-up Boundary
	Property Line
	Lot Split Line
	Section Line
	Centerline
	Right-of-Way Line
	Corporation Line

SURVEY INDEX		
REC. 20-82	LND. 13-135	LND. 4-254
	LND. 16-198	LND. 5-66
	LND. 17-12	LND. 18-50
	LND. 19-150	LND. 19-157
	LND. 29-159	



PREPARED BY: MIAMI COUNTY ENGINEER'S MAP DEPARTMENT
PAUL P. HUESLKAMP, COUNTY ENGINEER
DATE: AUGUST 10, 2006
REVISED: FEBRUARY 6, 2012