

SECTION 17 & 20
TOWN 6
RANGE 5

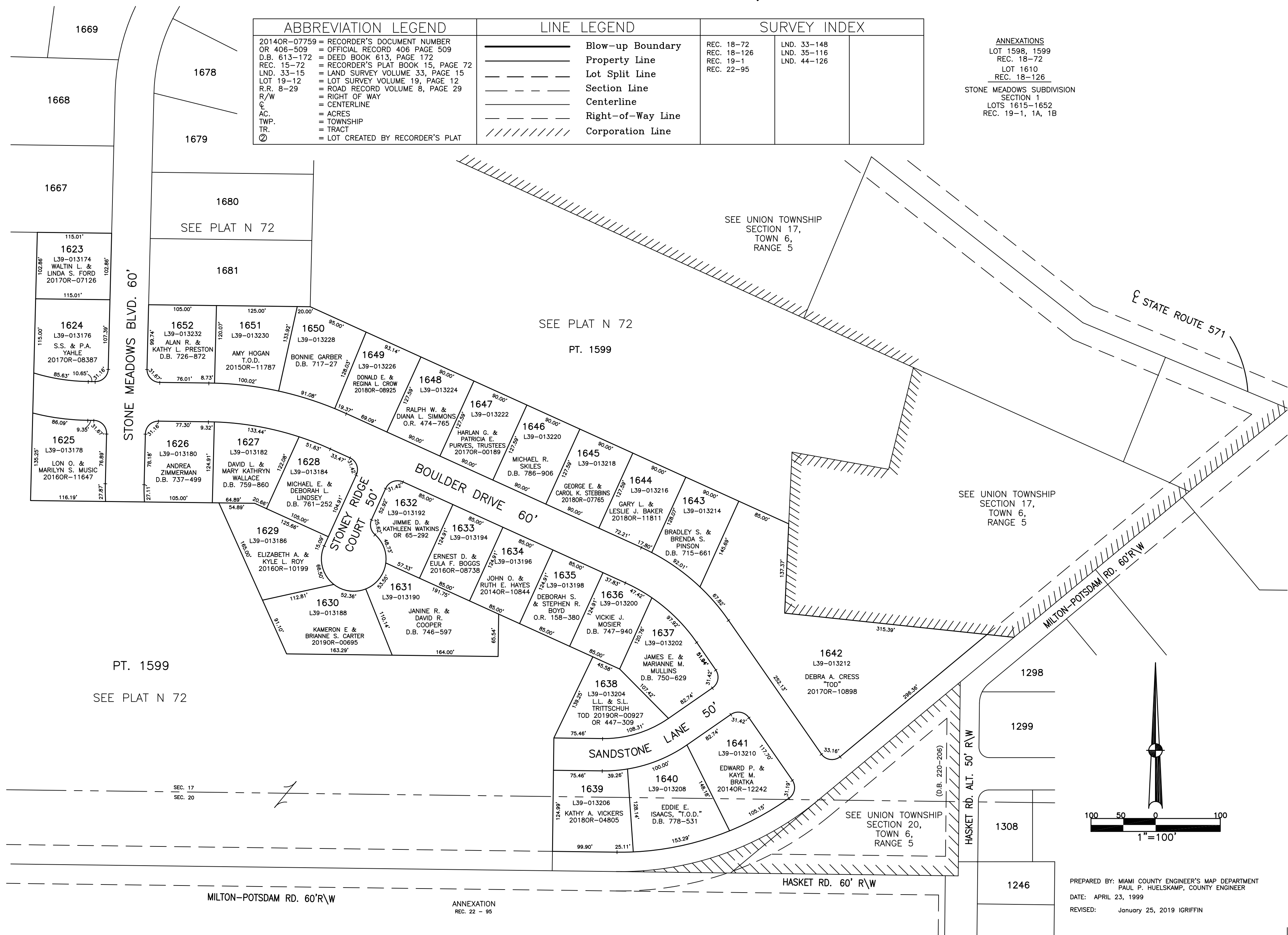
VILLAGE OF WEST MILTON
MIAMI COUNTY, OHIO

PARCEL NUMBER
L39 - _____

PLAT N 73

ABBREVIATION LEGEND		LINE LEGEND		SURVEY INDEX	
2014OR-07759	= RECORDER'S DOCUMENT NUMBER		Blow-up Boundary	REC. 18-72	LND. 33-148
OR 406-509	= OFFICIAL RECORD 406 PAGE 509		Property Line	REC. 18-126	LND. 35-116
D.B. 613-172	= DEED BOOK 613, PAGE 172		Lot Split Line	REC. 19-1	LND. 44-126
REC. 15-72	= RECORDER'S PLAT BOOK 15, PAGE 72		Section Line	REC. 22-95	
LND. 33-15	= LAND SURVEY VOLUME 33, PAGE 15		Centerline		
LOT 19-12	= LOT SURVEY VOLUME 19, PAGE 12		Right-of-Way Line		
R.R. 8-29	= ROAD RECORD VOLUME 8, PAGE 29		Corporation Line		
R/W	= RIGHT OF WAY				
AC.	= ACRES				
TWP.	= TOWNSHIP				
TR.	= TRACT				
Ⓞ	= LOT CREATED BY RECORDER'S PLAT				

ANNEXATIONS
LOT 1598, 1599
REC. 18-72
LOT 1610
REC. 18-126
STONE MEADOWS SUBDIVISION
SECTION 1
LOTS 1615-1652
REC. 19-1, 1A, 1B



PT. 1599
SEE PLAT N 72

SEE UNION TOWNSHIP
SECTION 20,
TOWN 6,
RANGE 5

MILTON-POTSDAM RD. 60'R\W
ANNEXATION
REC. 22 - 95

PREPARED BY: MIAMI COUNTY ENGINEER'S MAP DEPARTMENT
PAUL P. HUELSKAMP, COUNTY ENGINEER
DATE: APRIL 23, 1999
REVISED: January 25, 2019 IGRIFIN