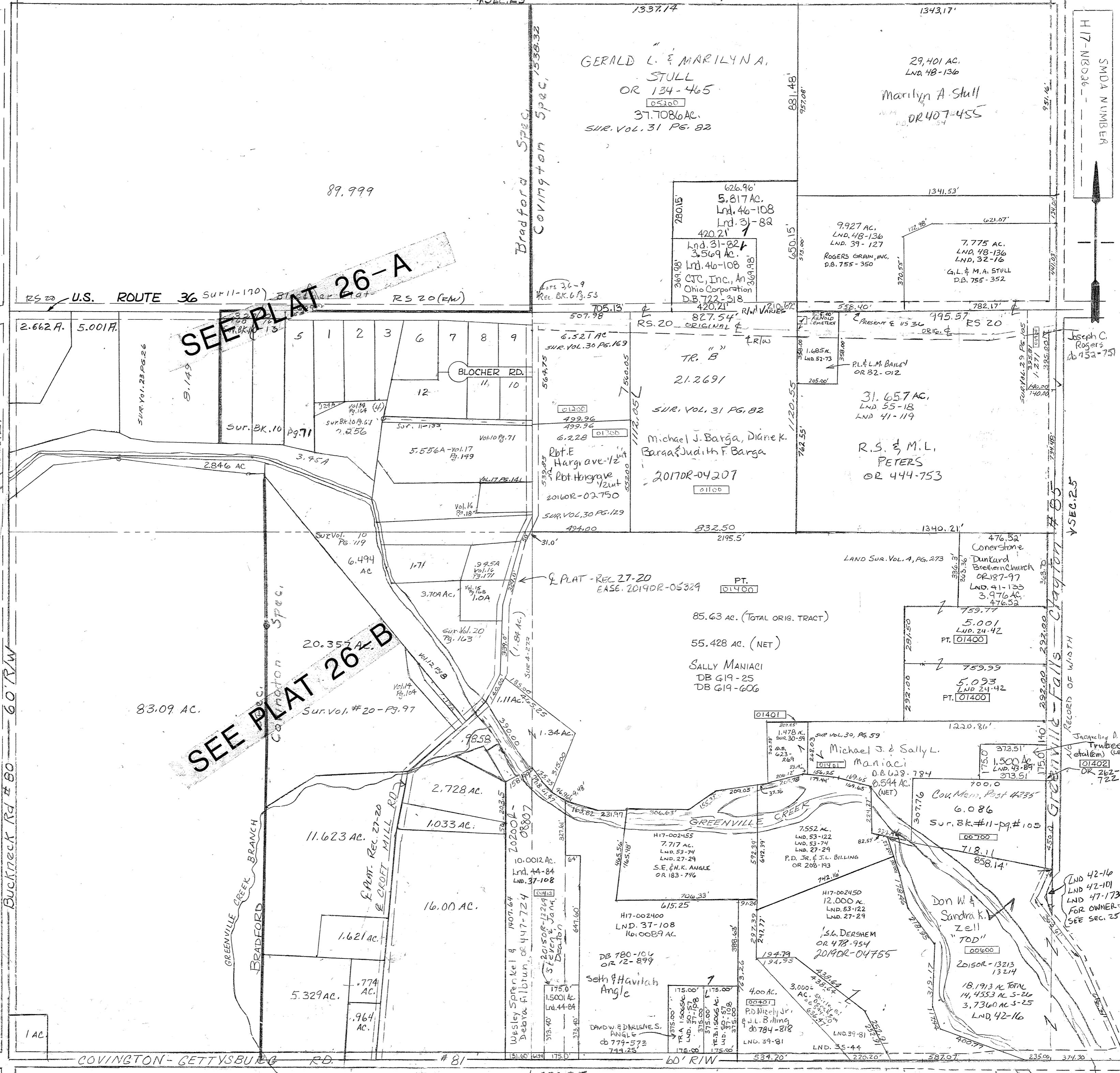


Lnd. 42-101 SE Cor SE Qtr.
Lnd. 43-89 E. Cen. Pt. SE Qtr.
Lnd. 44-84 SE Cor SW Qtr. &
SW Cor SE Qtr.
Lnd. 46-108 NW Pt NE Qtr.

Vol. 16 Pg. 171 N.E. Cor S.W.
Vol. 16 Pg. 180 S.E. Cor N.W. & N.E. Cor S.W.
Vol. 17 Pg. 121 S. Pt. S.W.
Vol. 17 Pg. 171 S.E. Cor N.W.
Vol. 17 Pg. 199 S.E. Pt. N.W.
Vol. 18 Pg. 119 S.E. Cor S.W.
LND. 41-133 NE Cor SE Qtr.
LND. 42-10 SE Cor SE Qtr.
AS EC. 27

Vol. 11 - Pg. 105 - E Cen Pt SE
133 - E Cen Pt NW
170 - E Cen Pt NW
30 - S.E. Pt NW
8 - E Cen Pt SW
9 - Cen Pt W 1/2
14 - E Cen Pt NW
14 - S Cen Pt NW
15 - Pt. 168 - N.E. Pt S.W.

Surveys -
Vol. 1 page 245 - (Whole)
Vol. 4 page 273 N 1/2 SE
13 - S Cen Pt NW
67 - S Cen Pt NW
71 - S Pt NW
15 - Blocher Plat. S Pt NW
119 - Cen Pt W 1/2



SEE PLAT 26-A

SEE PLAT 26-B

GERALD L. & MARILYN A. STULL
OR 134-465
37.7086 AC.
SUR. VOL. 31 PG. 82

29,401 AC.
LND. 48-136
Marilyn A. Stull
OR 407-455

626.96
5.817 AC.
Lnd. 46-108
Lnd. 31-82
420.21
356.9 AC.
Lnd. 46-108
384.98
CFC, Inc., An
Ohio Corporation
D.B. 722-318

9,927 AC.
LND. 48-136
LND. 39-127
ROGERS GRAM, INC.
D.B. 755-350

7,775 AC.
LND. 48-136
LND. 32-16
G.L. & M.A. STULL
D.B. 755-352

TR. "B"
21.2691
SUR. VOL. 31 PG. 82
Michael J. Barga, Diane K.
Barga & Judith F. Barga
2017DR-04207
01100

31.657 AC.
LND. 55-18
LND. 41-119
R.S. & M.L.
PETERS
OR 444-753

476.52
Cornerstone
Dunkard
Brethren Church
OR 187-97
LND. 41-135
3,976 AC.
476.52

85.63 AC. (TOTAL ORIG. TRACT)
55.428 AC. (NET)
SALLY MANIACI
DB G19-25
DB G19-606

Michael J. & Sally L.
Maniaci
O.B. 628-784
0.594 AC.
(NET)

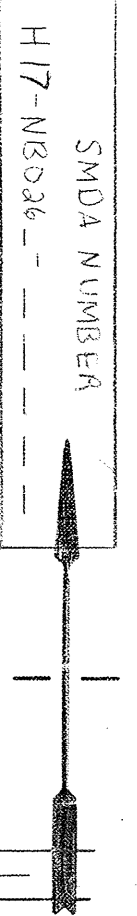
6,086
Sur. Bk. #11-Pg. #105
00700

Don W. &
Sandra K.
Zell
"TOD"
00600

Seth & Haviyah
Angle
DAVID & DARLENE S.
ANGLE
DB 779-572
744.25

S.G. DERSHEM
OR 478-954
2019DR-04755

18,193 AC TOTAL
14,4553 AC S-26
3,736 AC S-25
LND. 42-16



V SEC. 25

RECORD OF WITH

GREENVILLE FALLS CHRYSLER

Jacqueline A. Trubee (ES)

01402
DK 262-722