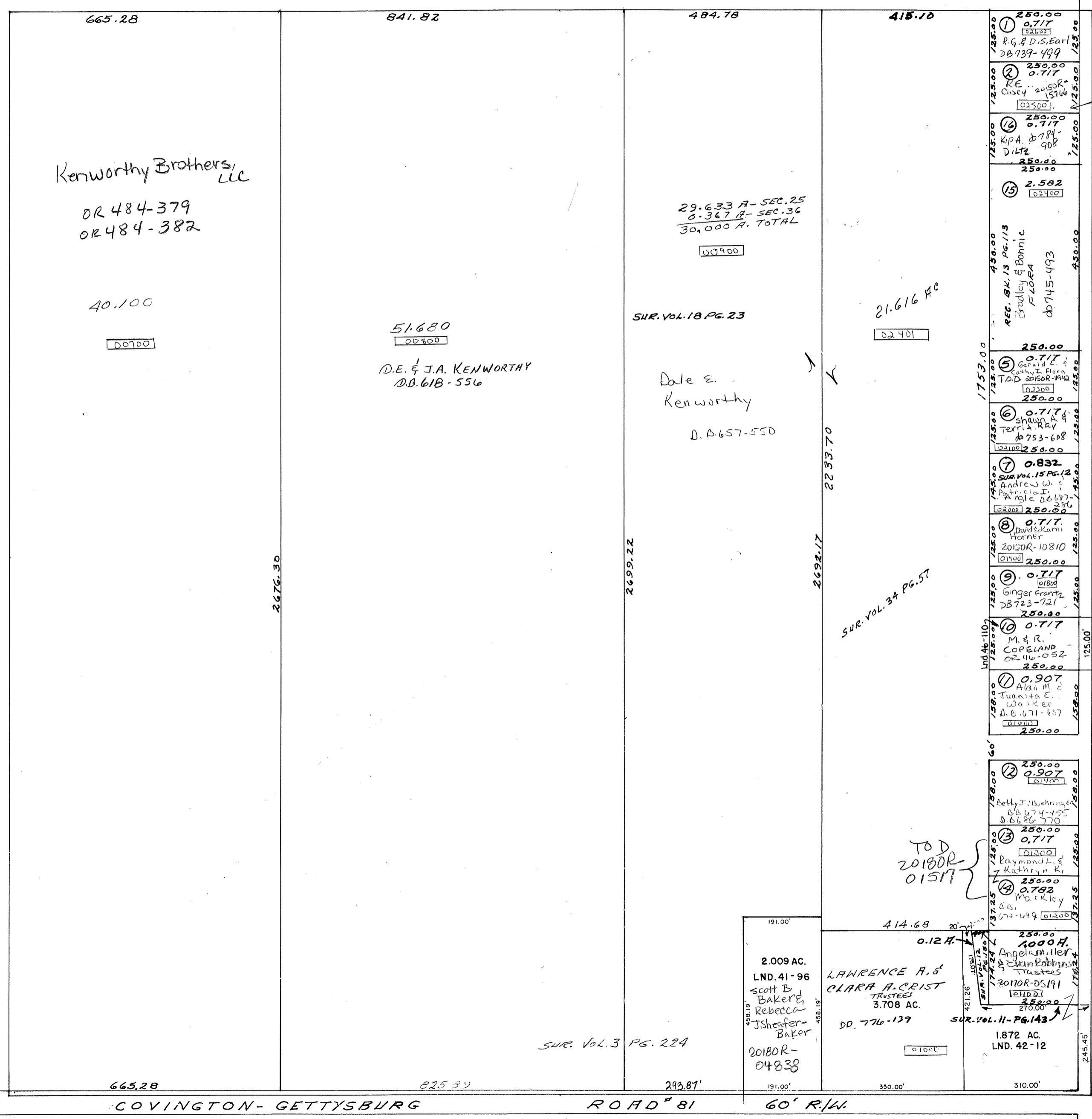


SMDA NUMBER
H17-NB0353- - - - -



Kenworthy Brothers, LLC
OR 484-379
OR 484-382

40.100

00700

51.680
00300
D.E. & J.A. KENWORTHY
D.B. 618-556

SUR. VOL. 18 PG. 23

Dale E.
Kenworthy
D. 6657-550

29.633 A - SEC. 25
0.367 B - SEC. 36
30.000 A. TOTAL

00900

21.616 AC

02401

2233.70

2692.17

SUR. VOL. 34 PG. 57

2.009 AC.
LND. 41-96
Scott B Baker
Rebecca J Sheffer-Baker
2018OR-04838

LAWRENCE A. &
CLARA A. CRIST
TRUSTEES
3.708 AC.
DD. 776-137

1.872 AC.
LND. 42-12

- 250.00
0.717
R.G. & D.S. EARL
DB 739-499
- 250.00
0.717
RE. 2019OR-1516
Custy
02500
- 250.00
0.717
Kip A. D 784-908
Diltz
- 250.00
2.582
02400
- 250.00
0.717
REC. BK. 13 PG. 113
Bradley & Bonnie
FLORA
db 745-493
- 250.00
0.717
Gerald I. Horn
T.D. 205OR-1948
- 250.00
0.717
shawn A. Ray
Terra A. Ray
db 753-608
- 250.00
0.832
SUR. VOL. 15 PG. 12
Andrew W. C
Patricia I. C
Able 06687-336
- 250.00
0.717
David & Kami
Hornor
2012OR-10810
- 250.00
0.717
Ginger Prantz
DB 723-721
- 250.00
0.717
M. & R.
COPELAND
OR 46-052
- 250.00
0.907
Alan M. C
Juanita C.
Walker
D.B. 671-457
- 250.00
0.907
Betty J. Buchner
db 674-455
db 6686-770
- 250.00
0.717
Raymond L. &
Kathryn K.
- 250.00
0.782
Markley
db 672-499
- 250.00
1000 A.
Angelina Hel
& Susan Hel
Trustees
2011OR-05191

2019OR-06058

FALLSVIEW ESTATES SUBD. #1
REC. BK 8 PG. 112

RANGE - LINE ROAD # 9

COVINGTON-GETTYSBURG ROAD # 81 60' R/W.