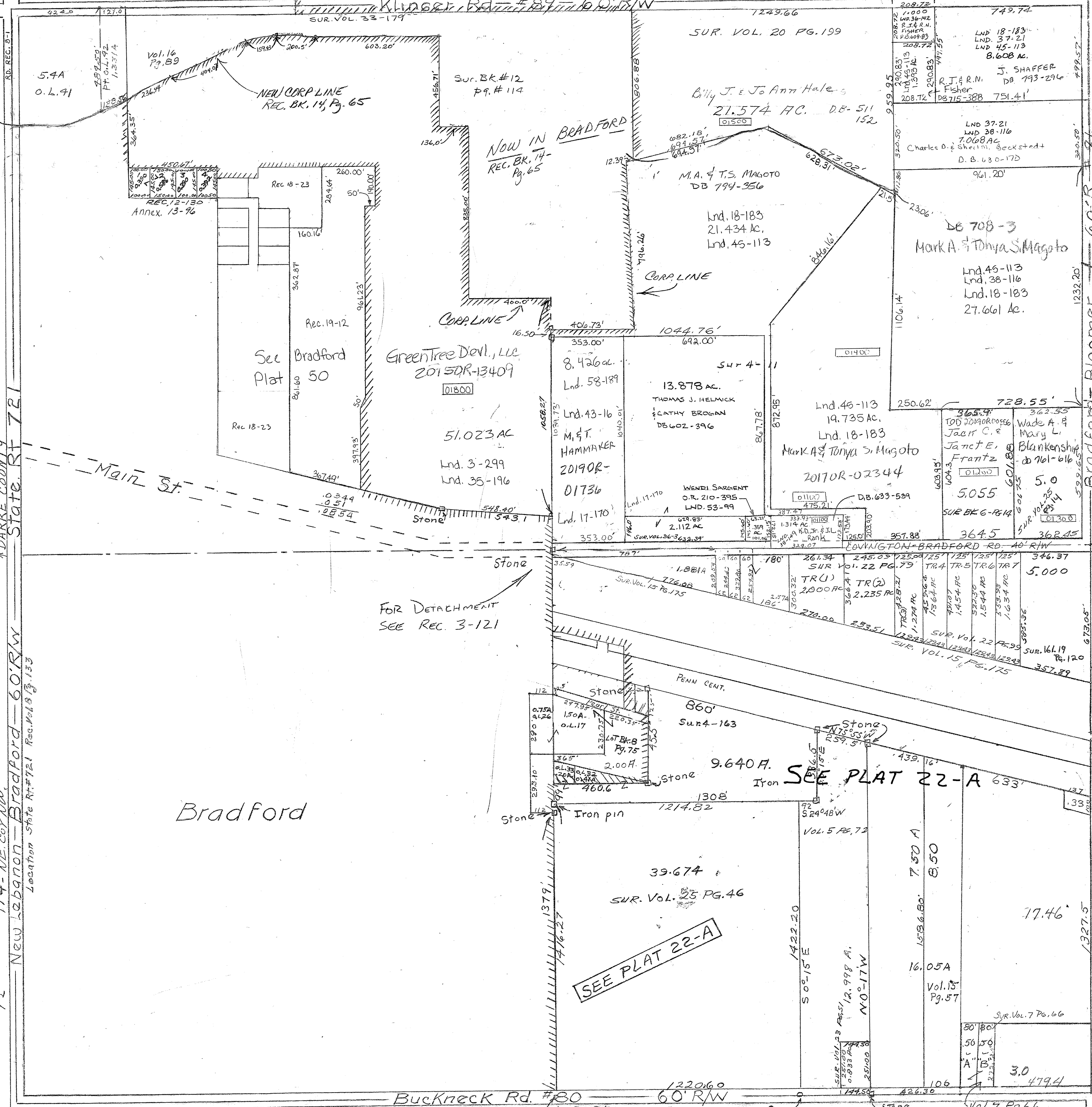


SMDA NUMBER  
H16-NB032



Record Sur. 8 - Pg. 6 - NW Cor. NW. Annexation Vol. 17 Pg. 170 S.W. Cor. N.E.  
Vol. 19 Pg. 120 S.E. 97A  
Lot. Bk. 8 - Pg. 75 - U. Cor. P. S.E.  
Land Vol. 15 - Pg. 57 - S.E. Pt. S.E.  
Vol. 15 - Pg. 175 - N. Side S.E.  
Rec. Vol. 8 Pg. 133 Location on State Rt. 721  
Vol. 17 Pg. 170 S.W. Cor. N.E.  
Vol. 19 Pg. 120 S.E. 97A  
LND. 38-116 N.E. 1/4  
LND. 38-149 N.E. 1/4  
LND. 43-16 SW COR NEQAT.  
LND. 45-113 NE COTT.  
Rec. 19-12 Cor. Pt. NWQAT.

Surveys 5  
Vol. 3 page 299 - NW. OR  
Vol. 4 page 11 - SYRVE.  
Vol. 4 page 163 - W. Cor. P. S.E.  
Vol. 5 page 72 - S. Cor. P. S.E.  
Vol. 6 page 14 - S.E. Cor. N.E.  
Vol. 7 page 66 - S.E. Cor. S.E.  
Vol. 12 page 109 - Bradford  
Vol. 12 page 114 - N.E. Cor. NW.

DARKE COUNTY  
Bradford - 60' R/W  
State Rt. 721  
New Lebanon Bradford - 60' R/W  
Location State Rt. 721 Rec. Vol. 8 Pg. 133

Bradford

SEE PLAT 22-A

SEE PLAT 22-A

Bradford - Bloomer  
60' R/W  
SEC. 23  
#88

By Air Map