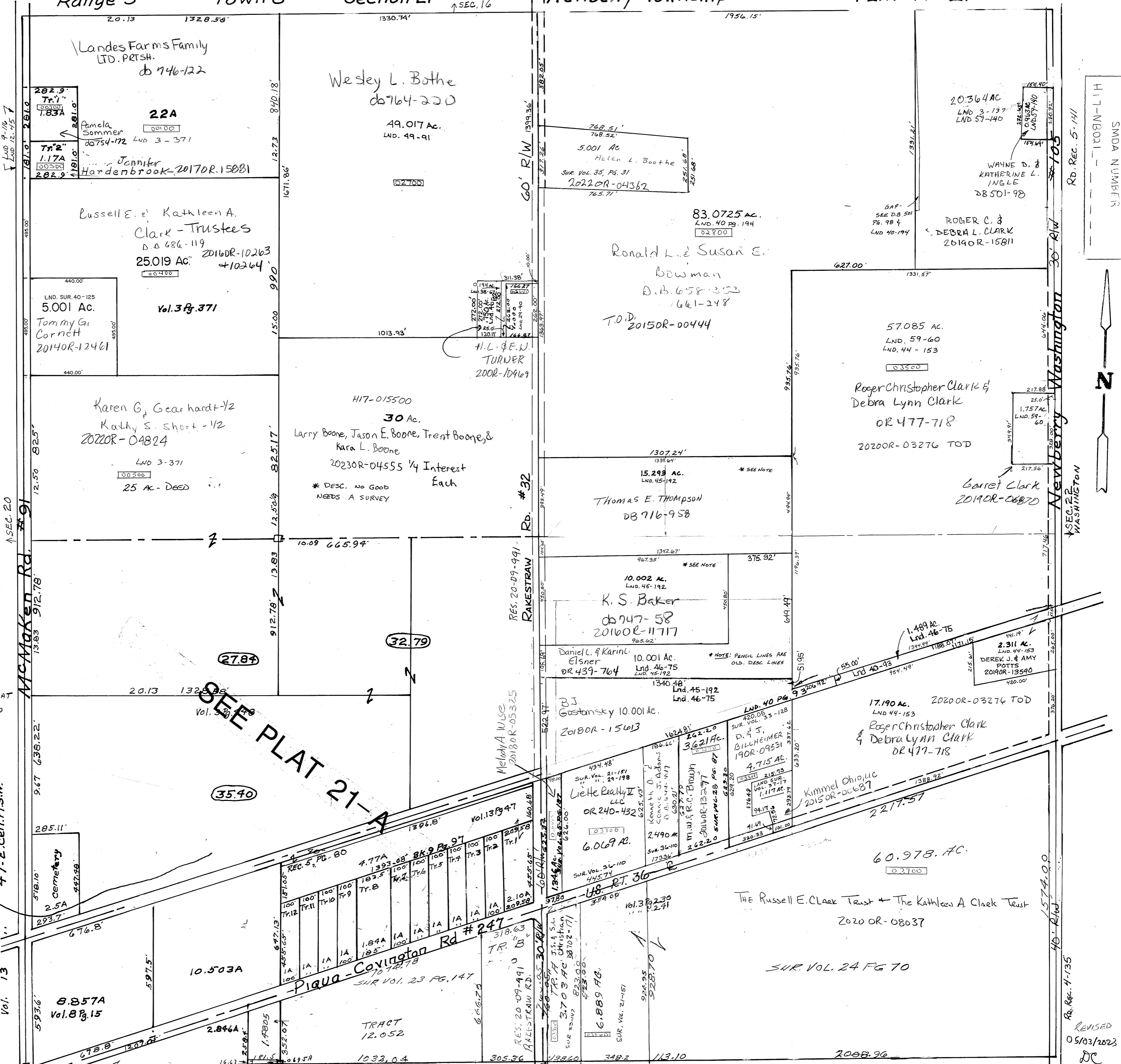


SE 1/4 36-110

LND. 4A-91 E. Pt. NW

Vol. 18 Pg. 30 S.W. COR. S.W. 1/4
LND. SUR. VOL. 40 PG. 125 W. Cor. Pt. NW
LND. 46-75 NW COR. SE QTR
LND. 46-122 E. COR. PLANNING QTR
LND. 69-140 S.E. 1/4 NE QTR
ROUTSON PLAT BK. 5 Pg. 80

- Surveys -
- Vol. 3 Page 137 - Whole
- Vol. 3 230 - S.W. Pt. S.E.
- Vol. 3 241 - S.W. Pt. S.E.
- Vol. 3 371 - W. Pt. N.W.
- Vol. 3 499 - S.W. Pt. S.W.
- Vol. 9 15 - E. Cent. Pt. S.W.
- Vol. 9 116 - N.W. Pt. N.W.
- Vol. 12 45 - N.W. Pt. N.W.
- Vol. 13 47 - E. Cent. Pt. S.W.



SEE PLAT 21-A

SMDA NUMBER
H17-NB001



REVISED
05/03/2023
DC