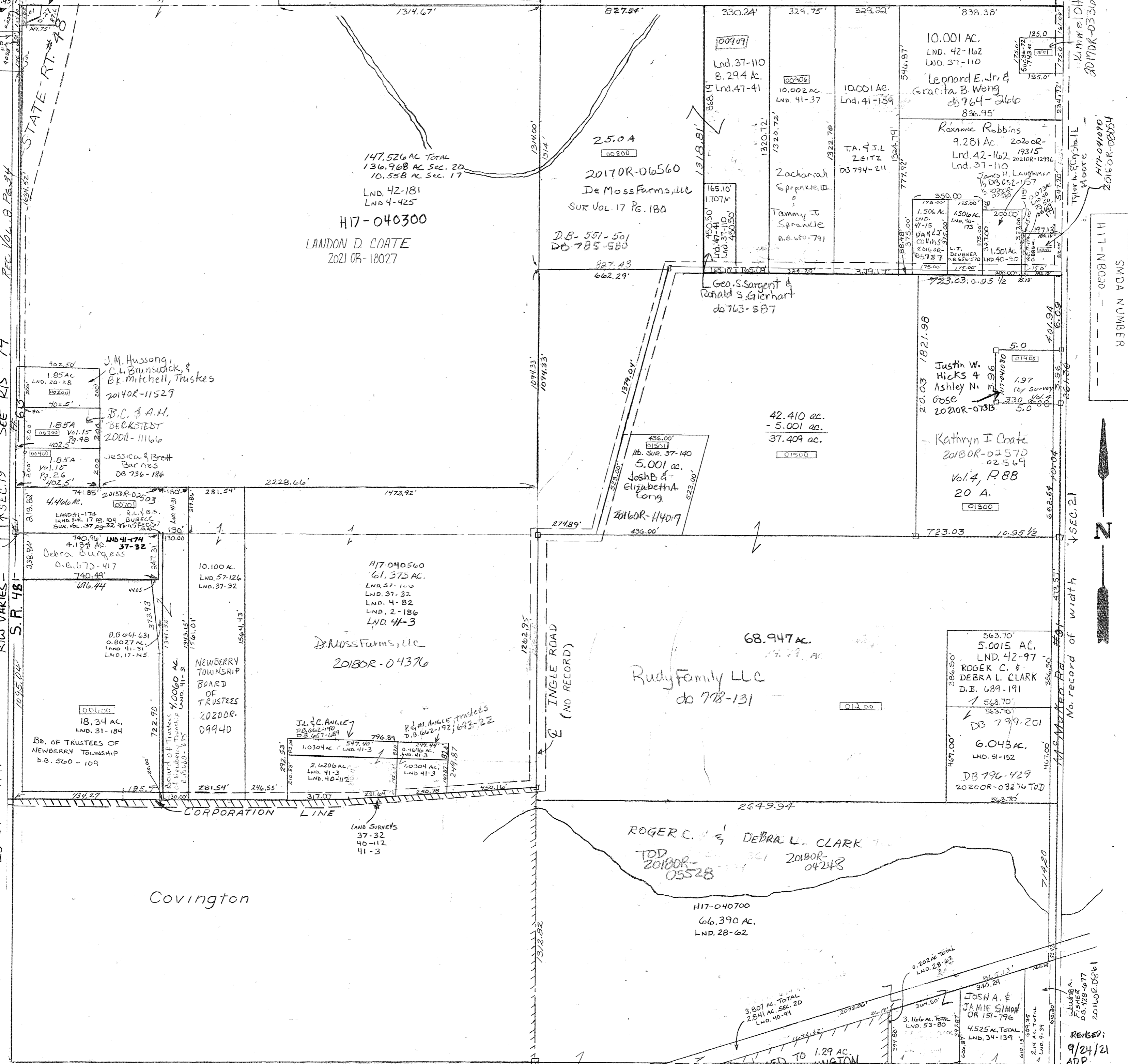


- Vol. 20 Pg. 28 S.W. Cor. NW Q. 4
- Vol. 15 Pg. 48 S.W. Pt. N.W.
- Vol. 16 Pg. 160 S.E. Pt. S.E.
- Vol. 17 Pg. 93 NW Cor. N.W.
- Vol. 17 Pg. 104 N.W. Cor. S.W. 1/4 NW 1/4
- Vol. 17 Pg. 145 NW Pt. S.W.
- Vol. 17 Pg. 179 E. Pt. S.W.
- Vol. 17 Pg. 180 NW Pt. S.W.
- Vol. 15 Pg. 48 S.W. Pt. N.W.
- Vol. 16 Pg. 160 S.E. Pt. S.E.
- Vol. 17 Pg. 93 NW Cor. N.W.
- Vol. 17 Pg. 104 N.W. Cor. S.W. 1/4 NW 1/4
- Vol. 17 Pg. 145 NW Pt. S.W.
- Vol. 17 Pg. 179 E. Pt. S.W.
- Vol. 17 Pg. 180 NW Pt. S.W.
- 186 - Pt. NW - SW
- 82 - N Pt. SW - S Pt. NW - SW
- 88 - SE Pt. NE
- 303 - W Cen Pt. SW
- 425 - NW Q. 4
- 39 - SE Cor. SE
- 26 - SW. Cor. N.W.



Kimme 1010, LLC
2017DR-03305

Tyler N. Conyshall Moore
H17-040190
2016OR-08054

SMDA NUMBER
H17-NB030

No. record of width
Ms. Marker Rd #91

REVISOR:
9/24/21
ADP

- Surveys:
- Vol. 2 Page
- Vol. 4 page
- Vol. 4 page
- Vol. 4 page
- Vol. 4 page
- " "
- " "

Covington

ANNEXED TO 1.29 AC.
VILLAGE OF COVINGTON
SEE REC. BK. 10, PG. 115

SEC. 29