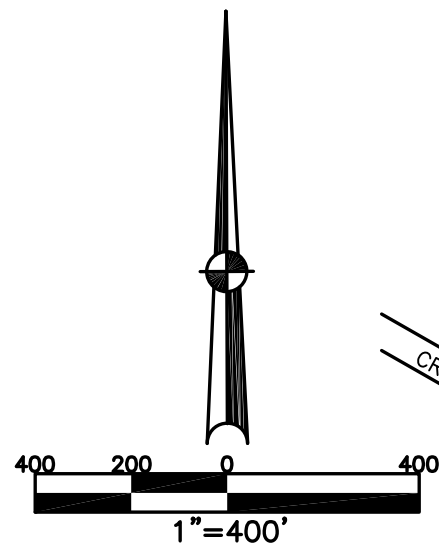


NEWBERRY TWP.
MIAMI COUNTY, OHIO

SECTION 18 TOWN 8 RANGE 5

PLAT 18

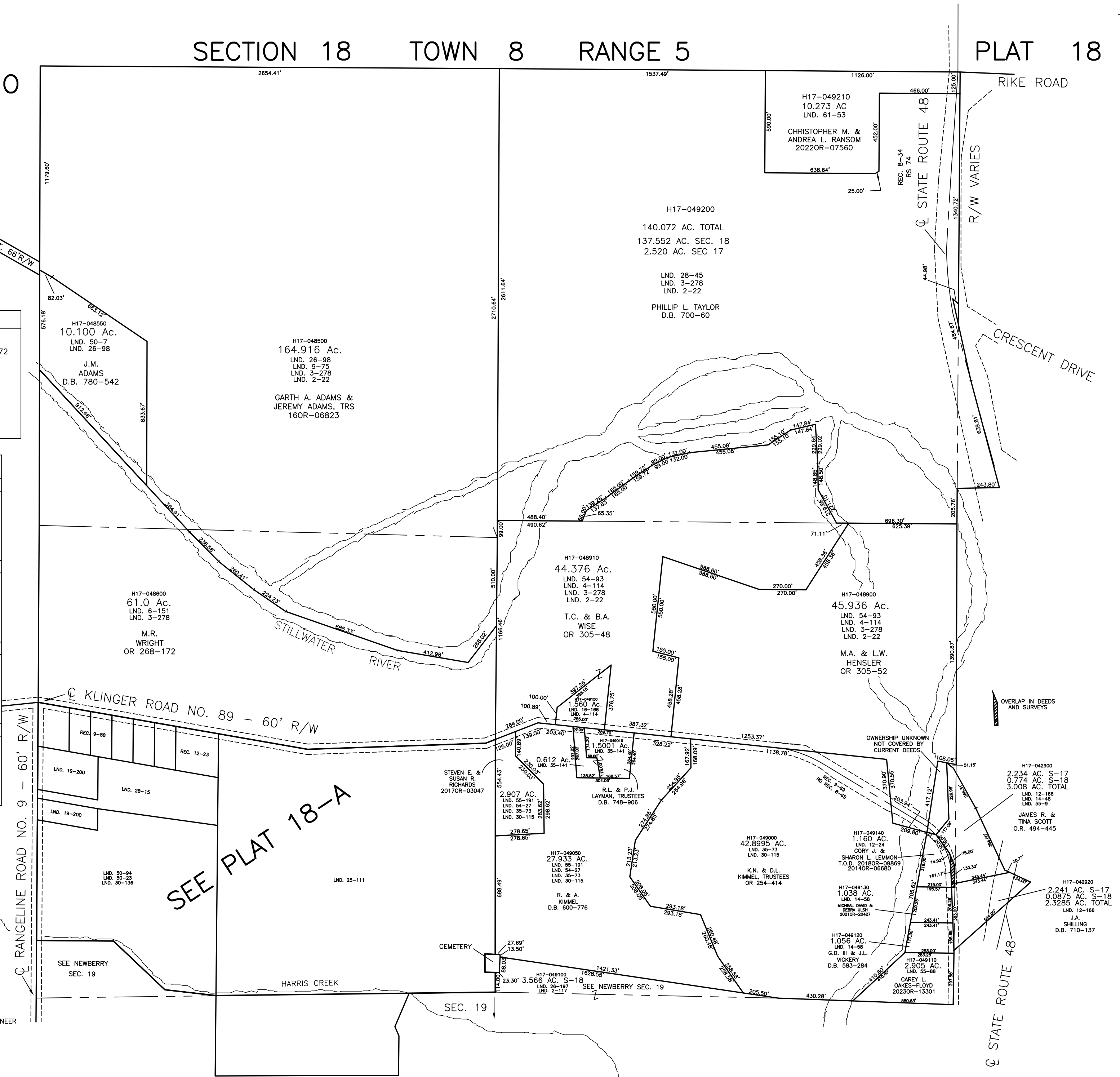


ABBREVIATION LEGEND

OR 167-214 = OFFICIAL RECORD 167 PAGE 214
 D.B. 613-172 = DEED BOOK 613, PAGE 172
 REC. 15-72 = RECORDER'S PLAT BOOK 15, PAGE 72
 LND. 33-15 = LAND SURVEY VOLUME 33, PAGE 15
 LOT 19-12 = LOT SURVEY VOLUME 19, PAGE 12
 R.R. 8-29 = ROAD RECORD VOLUME 8, PAGE 29
 R/W = RIGHT OF WAY
 C = CENTERLINE
 AC. = ACRES
 TWP. = TOWNSHIP
 TR. = TRACT
 (Circled symbol) = LOT CREATED BY RECORDER'S PLAT

SURVEY INDEX

NORTHWEST QUARTER		
LND. 2-22		
LND. 3-278		
LND. 6-151		
LND. 9-75		
LND. 26-98		
LND. 50-7		
NORTHEAST QUARTER		
LND. 2-22		REC. 8-34 RS 74
LND. 3-278		
LND. 4-114		
LND. 24-28		
LND. 28-45		
LND. 61-53		
SOUTHWEST QUARTER		
LND. 2-22	LND. 50-94	REC. 9-88
LND. 3-278	LND. 55-9	REC. 12-23
LND. 6-151		
LND. 9-75		
LND. 19-200		
LND. 25-111		
LND. 28-15		
LND. 30-136		
LND. 50-23		
SOUTHEAST QUARTER		
LND. 2-22	LND. 30-115	REC. 9-69
LND. 2-117	LND. 35-73	RD REC. 8-65
LND. 3-278	LND. 35-141	
LND. 4-114	LND. 54-27	
LND. 12-24	LND. 54-93	
LND. 12-166	LND. 55-9	
LND. 14-48	LND. 55-88	
LND. 14-58	LND. 55-191	
LND. 16-166		
LND. 26-197		



PREPARED BY: MIAMI COUNTY ENGINEER'S MAP DEPARTMENT
 PAUL P. HUELSKAMP, P.E. P.S., COUNTY ENGINEER
 DATE: DECEMBER 14, 2012 DV
 REVISED: December 4, 2023 DCASSEL