

# NEWBERRY TWP.

# MIAMI COUNTY, OHIO

# PLAT 12

## Section 12, Town 9, Range 4

PARCEL NUMBER  
H-17 -

### NORTHEAST QUARTER

LAND SURVEY VOL. 35, PAGE 130  
" " VOL. 35, PAGE 137  
LND. 44, PAGE 98

### SOUTHEAST QUARTER

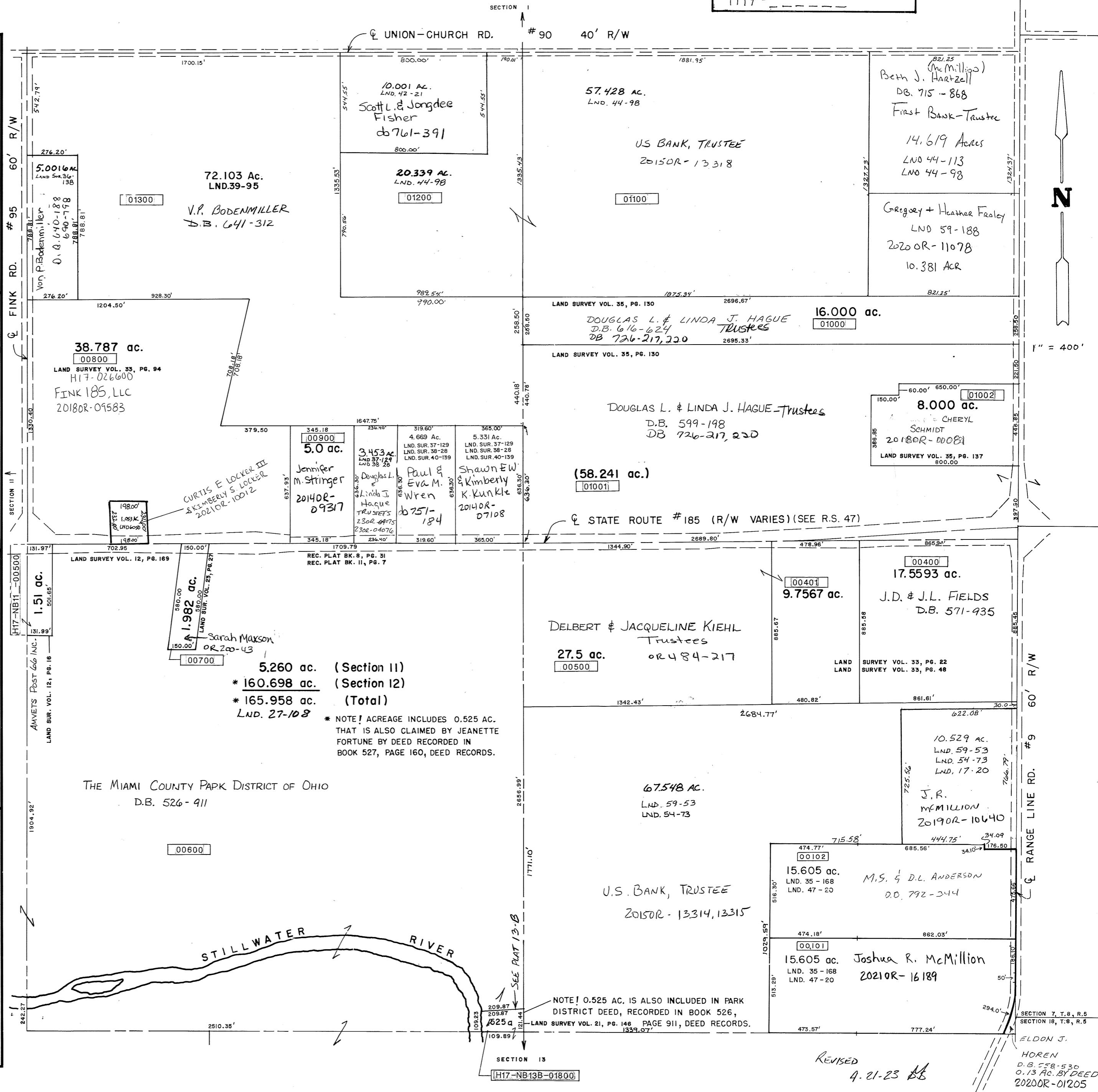
LAND SURVEY VOL. 17, PAGE 20  
" " VOL. 33, PAGE 22  
" " VOL. 33, PAGE 48  
" " VOL. 35, PAGE 168  
" " VOL. 47, PAGE 20  
LND. 54-73  
LND. 59-53

### SOUTHWEST QUARTER

LAND SURVEY VOL. 12, PAGE 16  
" " VOL. 12, PAGE 169  
" " VOL. 21, PAGE 146  
" " VOL. 23, PAGE 27  
" " VOL. 27, PAGE 108

### NORTHWEST QUARTER

LAND SURVEY VOL. 33, PAGE 94  
" " VOL. 35, PAGE 130  
" " VOL. 35, PAGE 137  
" " VOL. 36, PAGE 138  
" " VOL. 37, PAGE 129  
" " VOL. 38, PAGE 28  
" " VOL. 39-95  
" " VOL. 40, PAGE 139  
" " VOL. 42, PAGE 21  
" " VOL. 44, PAGE 98  
" " VOL. 60, PAGE 50



1" = 400'

60' R/W

#9

RANGE LINE RD.

#9

SECTION 12, T. 9, R. 5

SECTION 18, T. 9, R. 5

ELDON J. HOREN

D.B. 558-530

0.13 AC. BY DEED

2020OR-01205

REVISED  
4.21.25 AS