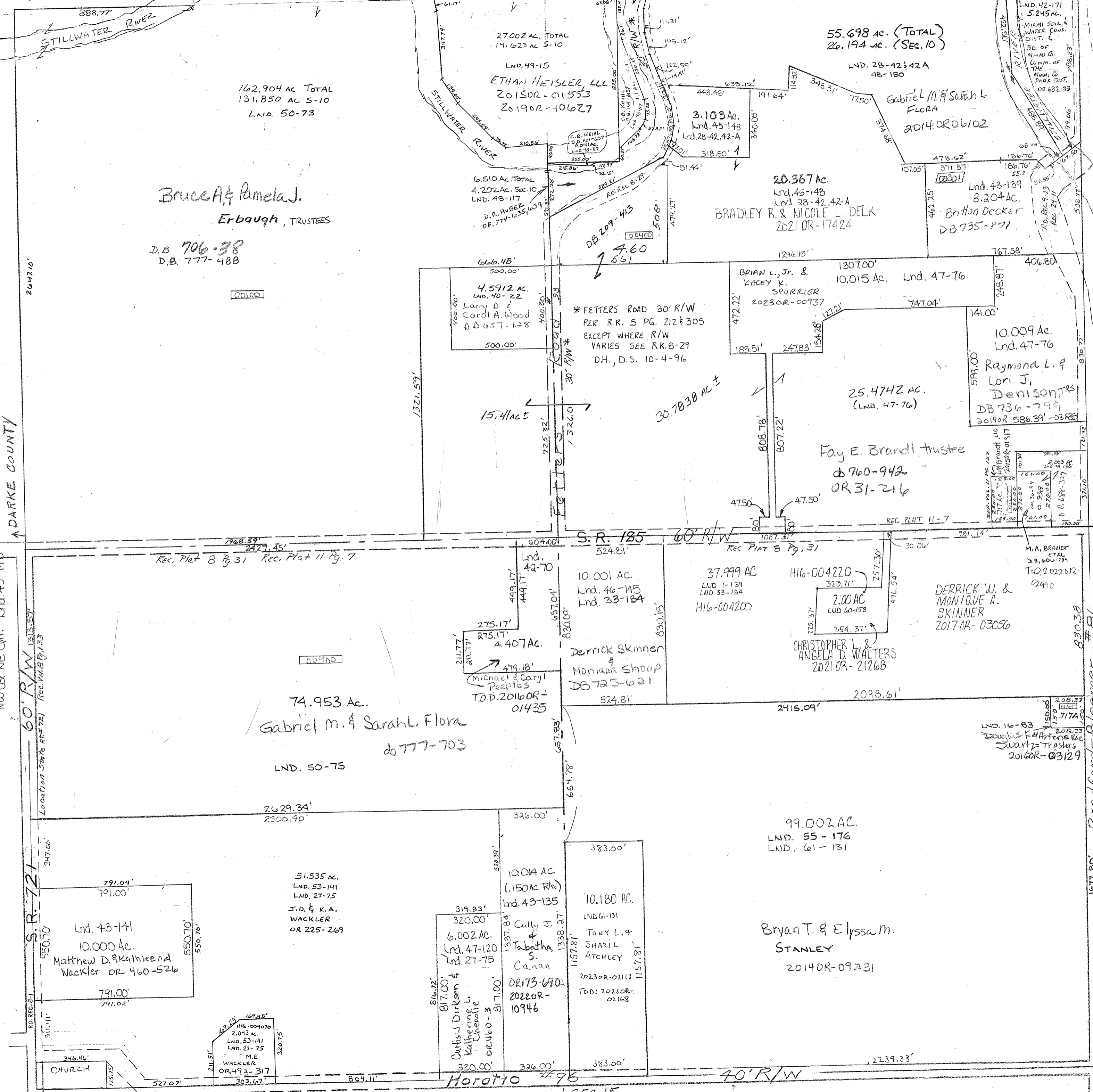


Range 4 Town 9 SECTION 10 SEC. 3 Newberry Township 2632 PLAT NO. 10



Bruce A. & Pamela J.
Erbough, TRUSTEES
D.B. 706-38
D.B. 777-488

NW Cor SE Qtr. - Lnd. 46-145
SE Cor NE Qtr. - Lnd. 47-76
SE Cor SW Qtr. - Lnd. 47-120
N. Pt. NE Qtr. - Lnd. 48-180
N. Pt. NE Qtr. - Lnd. 48-117

NE. Cor SW Qtr. - Lnd. 42-70
NE. Cor. NE. Qtr. - Lnd. 42-171
SE Cor. SW Qtr. - Lnd. 43-135
E. Cor. Pt. NE. Qtr. - Lnd. 43-139
W. Pt. SW Qtr. - Lnd. 43-141
NW Cor NE Qtr. - Lnd. 45-148

Surveys -
Vol. 1 page 139 - 1/2 Sec
Vol. 2 page 72 - Whole
159 - SE Cor NE
133 Location St. Pt. 72
83 NE. Pt. S.E

PARCEL NUMBER
H 16

REC. PLAT 11-7
REC. PLAT 8 PG. 31
REC. PLAT 11 PG. 7

Bradford-Boomer #86
Road Record 8-30481
REVISION
2-14-23
DJ