

Union-Church #90

40' RT/W

2682.13'

PARCEL NUMBER

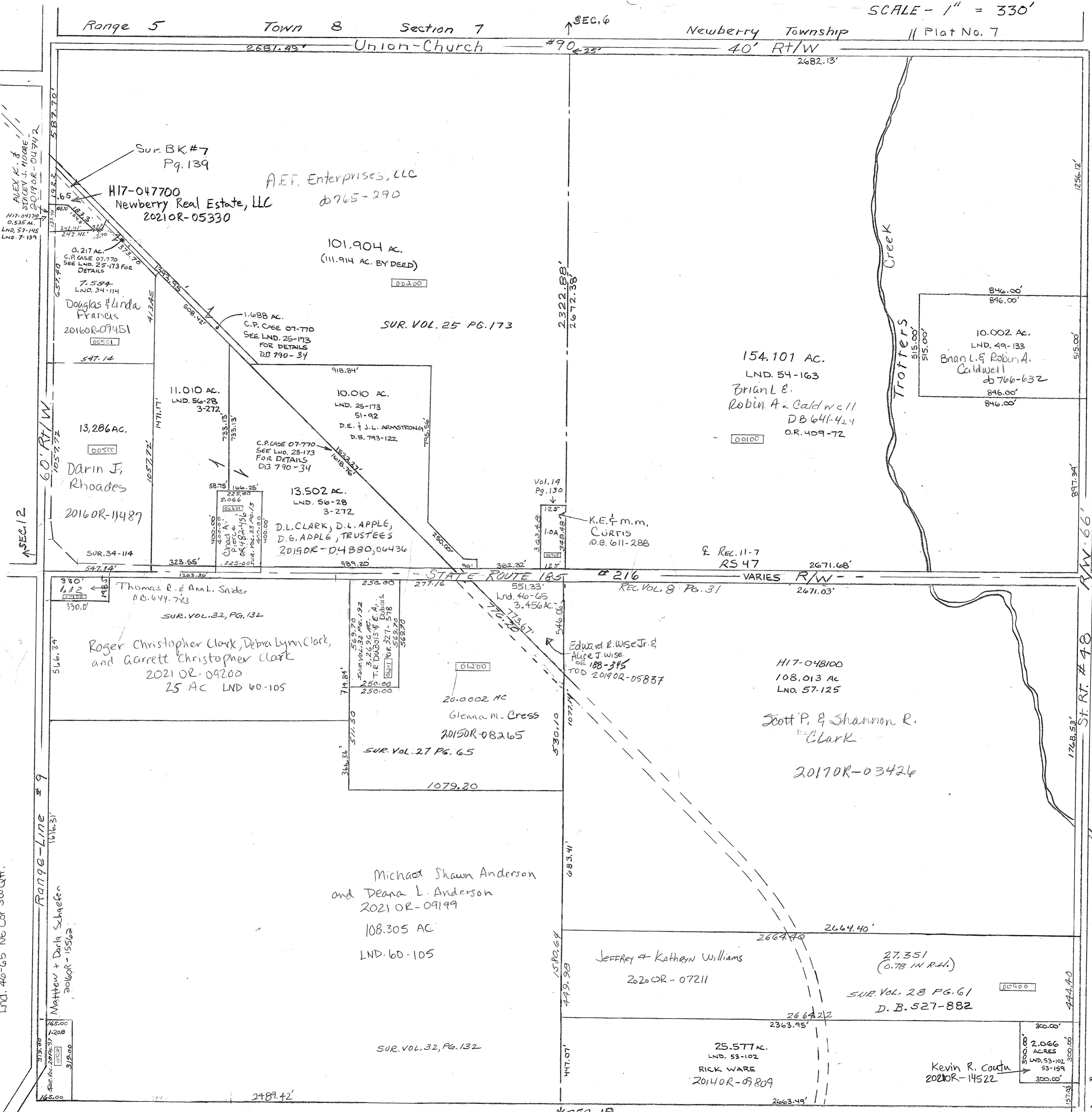


SEC. 6

SEC. 10

SEC. 18

Surveys
Vol. 3 Page 272 - SW P1NW
Vol. 7 Page 139 - Center P1NW
Vol. 14
Lnd. 40-65 NE Cor SW Qtr.



Sur. BK. #7
Pg. 139
H17-047700
Newberry Real Estate, LLC
2021OR-05330

A.E.T. Enterprises, LLC
0765-290

101.904 AC.
(111.914 AC. BY DEED)

0.217 AC.
C.P. CASE 07-770
SEE LND. 25-173 FOR
DETAILS
7.584
LND. 34-114
Douglas & Linda
Francis
2016OR-07451

13,286 AC.
Darin J.
Rhoades
2016OR-11487

11.010 AC.
LND. 56-28
3-272

10.010 AC.
LND. 25-173
51-92
D.E. & J.L. ARMSTRONG
D.B. 793-122

13.502 AC.
LND. 56-28
3-272
D.L. CLARK, D.L. APPLE,
D.E. APPLE, TRUSTEES
2019OR-04380, 06436

K.E. & M.M.
CURTIS
D.B. 611-288

154.101 AC.
LND. 54-163
Brian L.E.
Robin A. Caldwell
D.B. 641-424
O.R. 409-72

10.002 AC.
LND. 49-133
Brian L. & Robin A.
Caldwell
D.B. 766-632
846.00'

Thomas R. & Ann L. Snider
D.B. 644-743
SUR. VOL. 32, PG. 132
Roger Christopher Clark, Debra Lynn Clark,
and Garrett Christopher Clark
2021 OR-09200
25 AC LND 60-105

20.0002 AC
Glenna M. Cress
2015OR-08265
SUR. Vol. 27 Pg. 65

Edward E. Wise Jr. &
Alice J. Wise
D.B. 188-345
TOD 2019OR-05887

H17-048100
108.013 AC
LND. 57-125
Scott P. & Shannon R.
Clark
2017OR-03426

Michael Shawn Anderson
and Deana L. Anderson
2021 OR-09199
108.305 AC
LND. 60-105

JEFFREY & KATHRYN WILLIAMS
2020OR-07211

27.351
(0.78 IN P.L.I.)
SUR. Vol. 28 PG. 61
D. B. 527-882

25.577 AC.
LND. 53-102
RICK WARE
2014OR-09809

Kevin R. Coutu
2020OR-14522

REVISED:
8-17-21
AR/mer