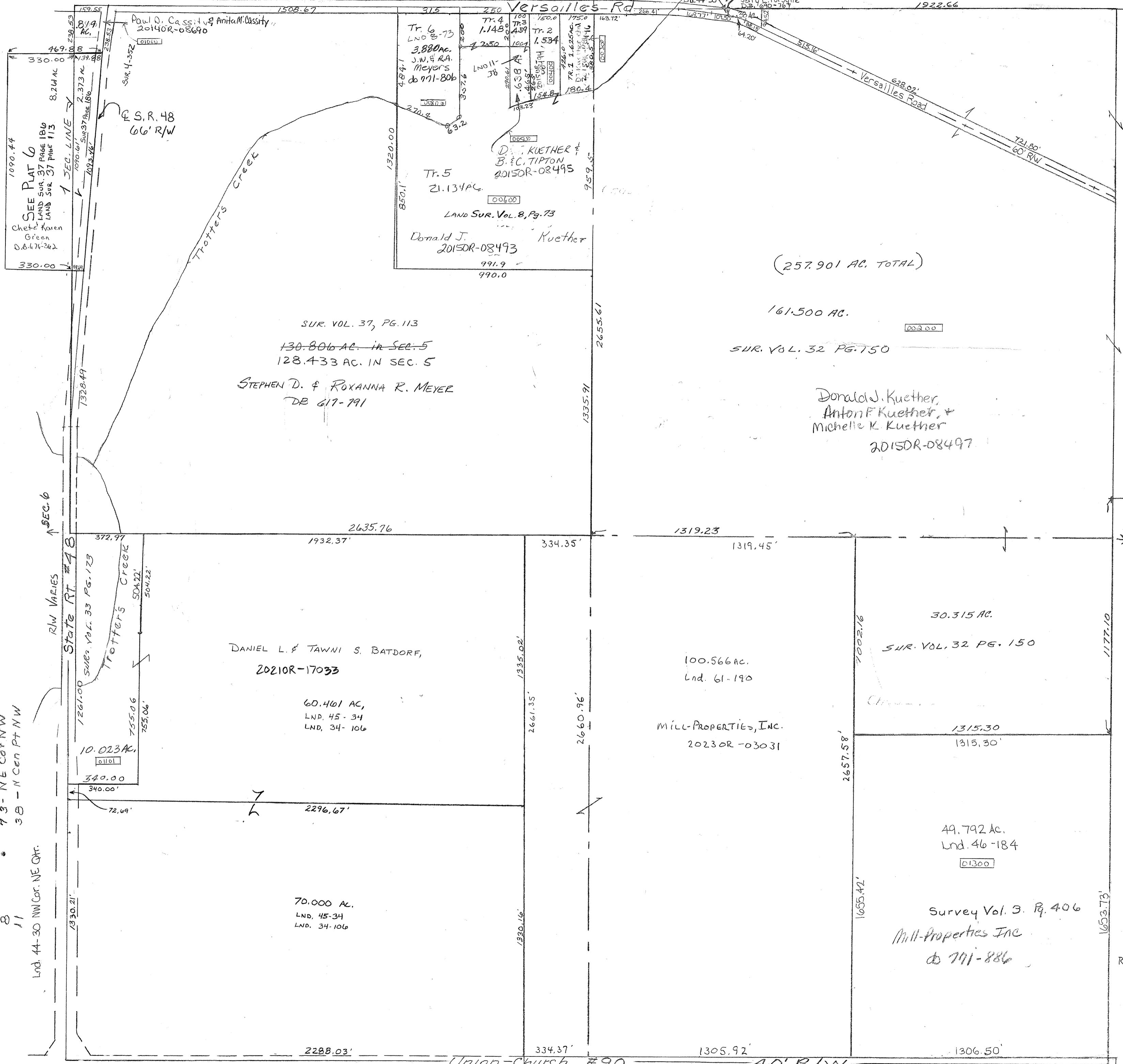


SMDA NUMBER  
H17-NB005



+ Surveys +  
 Vol. 2 page 178 - Whole  
 Vol. 3 page 406 - SE PT SE  
 Vol. 4 page 352 - Relocation str #48  
 73- NE Cor NW  
 38 - N Cen Pt NW  
 Lnd. 44-30 NW Cor. NE QTR.  
 Lnd. 47-184 SE Pt. SE QTR.

REVISED:  
 4-14-23  
 DJ