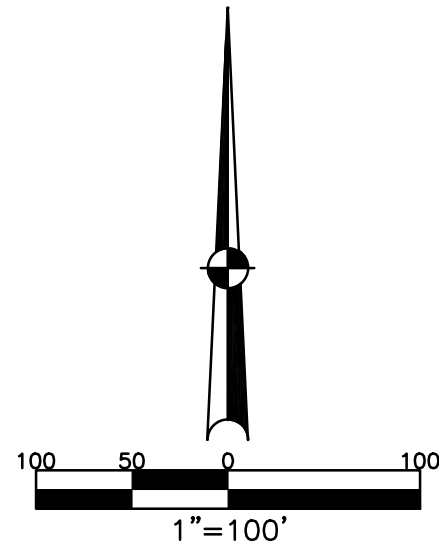


SECTION 20
TOWN 6
RANGE 5



ABBREVIATION LEGEND		
2014OR-07759	=	RECORDER'S DOCUMENT NUMBER OR 59-233
D.B. 613-172	=	DEED BOOK 613, PAGE 172
REC. 15-72	=	RECORDER'S PLAT BOOK 15, PAGE 72
LND. 33-15	=	LAND SURVEY VOLUME 33, PAGE 15
LOT 19-12	=	LOT SURVEY VOLUME 19, PAGE 12
R.R. 8-29	=	ROAD RECORD VOLUME 8, PAGE 29
R/W	=	RIGHT OF WAY
C	=	CENTERLINE
AC.	=	ACRES
TWP.	=	TOWNSHIP
TR.	=	TRACT
IL	=	INLOT

LINE LEGEND		
———	=	Blow-up Boundary
———	=	Property Line
- - - - -	=	Lot Split Line
———	=	Section Line
———	=	Centerline
- - - - -	=	Right-of-Way Line
///////	=	Corporation Line

SURVEY INDEX		
REC. 7-113	LND. 24 - 119	LOT 16-81
REC. 15-42	LND. 47 - 75	
REC. 15-88	LND. 58 - 81	
REC. 16-98		
REC. 18-4		
REC. 18-112		
REC. 20-7		
REC. 20-40		
REC. 20-132		
REC. 25-16		
REC. 26-87		

SEE PLAT 77N

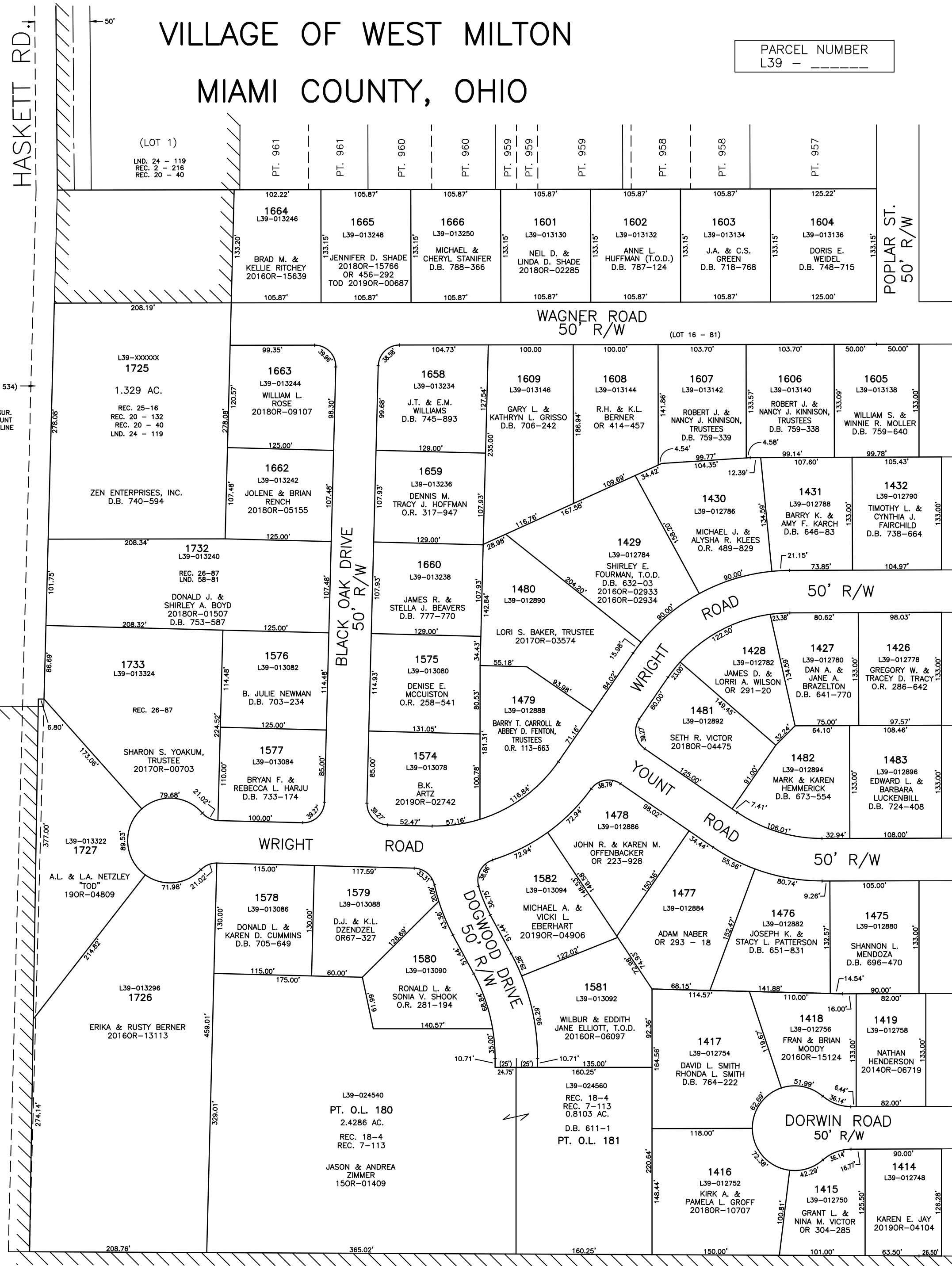
25' ADD'L. RIGHT-OF-WAY (D.B. 591 - 534)
LEGAL DESCRIPTION IN D.B. 591 - 534
FOLLOWS WEST LINE OF BOUNDARY FOR
6.039 AC. TRACT AS SHOWN ON LAND SURV.
VOL. 24 PG. 119, AND DOES NOT ACCOUNT
FOR THE 6.80' JOG ALONG THE SOUTH LINE
OF INLOT 1721.

(LND. 47 - 75)

VILLAGE OF WEST MILTON
MIAMI COUNTY, OHIO

PARCEL NUMBER
L39 - _____

PLAT 36 N



SEE PLAT 37N

SEE PLAT 40N

- ANNEXATIONS
REC. 7-113
REC. 20-132
- LOCUST HILL SUBDIVISION - SEC. 3
LOTS 1414-1419
REC. 15-42
- LOCUST HILL SUBDIVISION - SEC. 4
LOTS 1426-1432
REC. 15-88
- LOCUST HILL SUBDIVISION - SEC. 5
LOTS 1475-1483
REC. 16-98
- LOCUST HILL SUBDIVISION - SEC. 6
LOTS 1574-1582
REC. 18-4
- LOCUST HILL SUBDIVISION - SEC. 7
LOTS 1601-1609
REC. 18-112
- LOCUST HILL SUBDIVISION - SEC. 8
LOTS 1658-1666
REC. 20-7
- LOCUST HILL SUBDIVISION - SEC. 9
LOTS 1726-1728
REC. 25-90

SEE PLAT 41N