

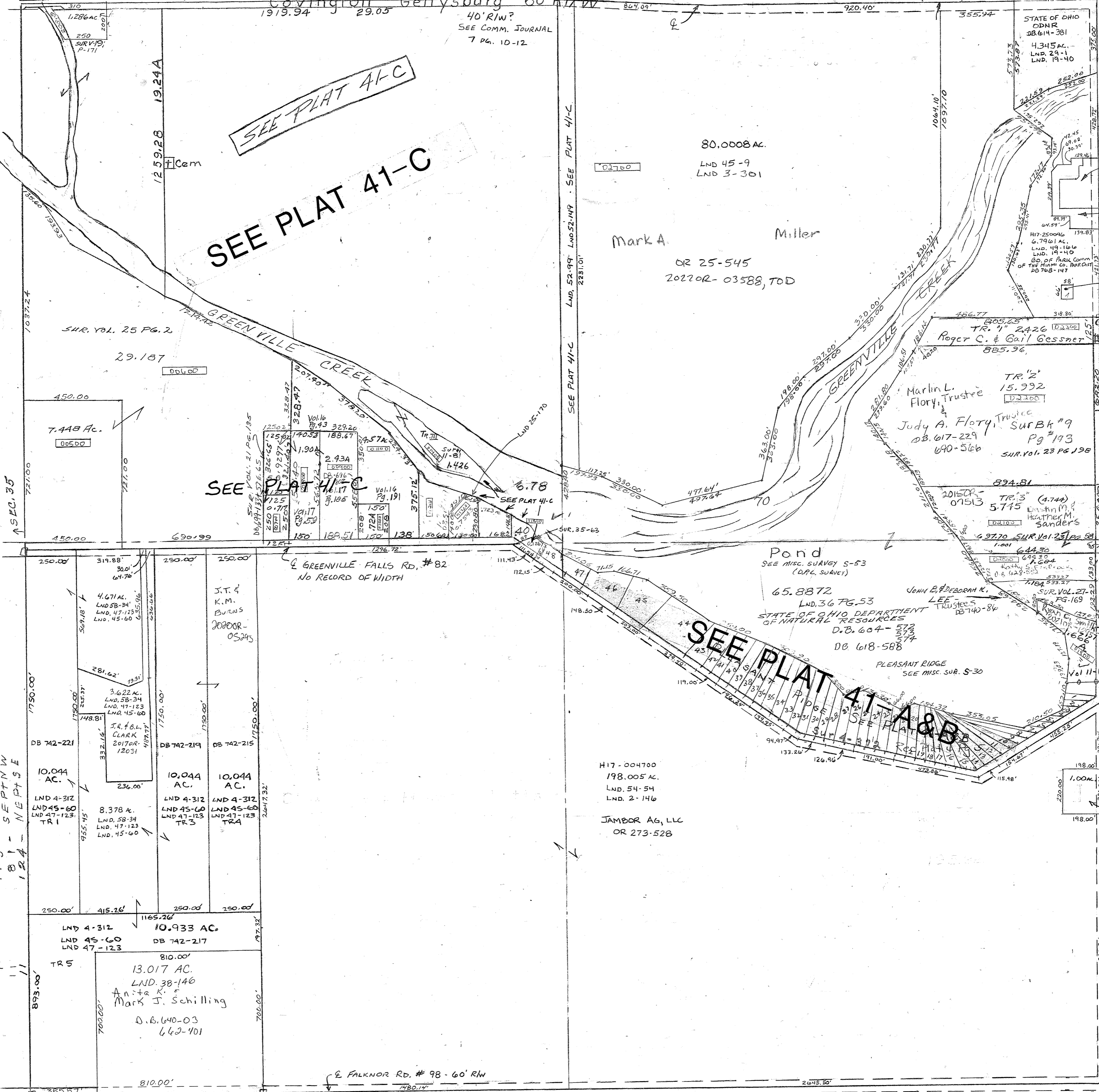
SEE PLAT 41-C

SEE PLAT 41-C

SEE PLAT 41-C

SEE PLAT 41-A & B

- Surveys
- Vol. 16 Pg. 191 - S. Pt. N.W.
- Vol. 16 Pg. 43 - S.E. Pt. N.E.
- Vol. 17 Pg. 5-9 - S. Cen. Pt. N.W.
- Vol. 17 Pg. 185 - S. Pt. N.W.
- Vol. 30 - Pleasant Ridge
- Vol. 30 - Est. Line N.E. Pt. N.W.
- Vol. 30 - P + NE PT SE
- Vol. 30 - SE PT NW
- Vol. 30 - NE PT SE
- Vol. 30 - W PT SW
- Vol. 30 - N Pt SE - Pleasant Ridge
- Vol. 30 - Est. Line N.E. Pt. N.W.
- Vol. 30 - P + NE PT SE
- Vol. 30 - SE PT NW
- Vol. 30 - NE PT SE



SUR. VOL. 25 PG. 2

7.448 AC.

4.671 AC. LND. 58-34

10.044 AC. LND. 45-60

8.378 AC. LND. 58-34

10.933 AC. DB 742-217

13.017 AC. LND. 38-146 Anita K. Mark J. Schilling

J.T. & K.M. BURNS

10.044 AC. LND. 45-60

10.044 AC. LND. 45-60

80,0008 AC. LND 45-9 LND 3-301

Mark A. Miller OR 25-545 202202-03588, TOD

65.8872 LND. 36 PG. 53 STATE OF OHIO DEPARTMENT OF NATURAL RESOURCES

H17-004700 198.005 AC. LND. 54-54 LND. 2-146

JAMBOR AG, LLC OR 273-528

STATE OF OHIO DBNR 28.614-381 4.345 AC. LND. 29-1 LND. 19-40

Marlin L. Flory, Trustee Judy A. Flory, Trustee SUR. VOL. 23 PG. 198

JOHN P. DEBORAH K. LEE TRUSTEES DB. 740-84

0.83 AC. SUR. VOL. 133 DP&L DB. 267-130

0.769 AC. LND. 49-140 DP&L DB. 273-503

0.0879 AC. LND. 54-98 DP&L DB. 273-503

Trustees DB. 550-537

REVISOR 7-28-21 APJmer