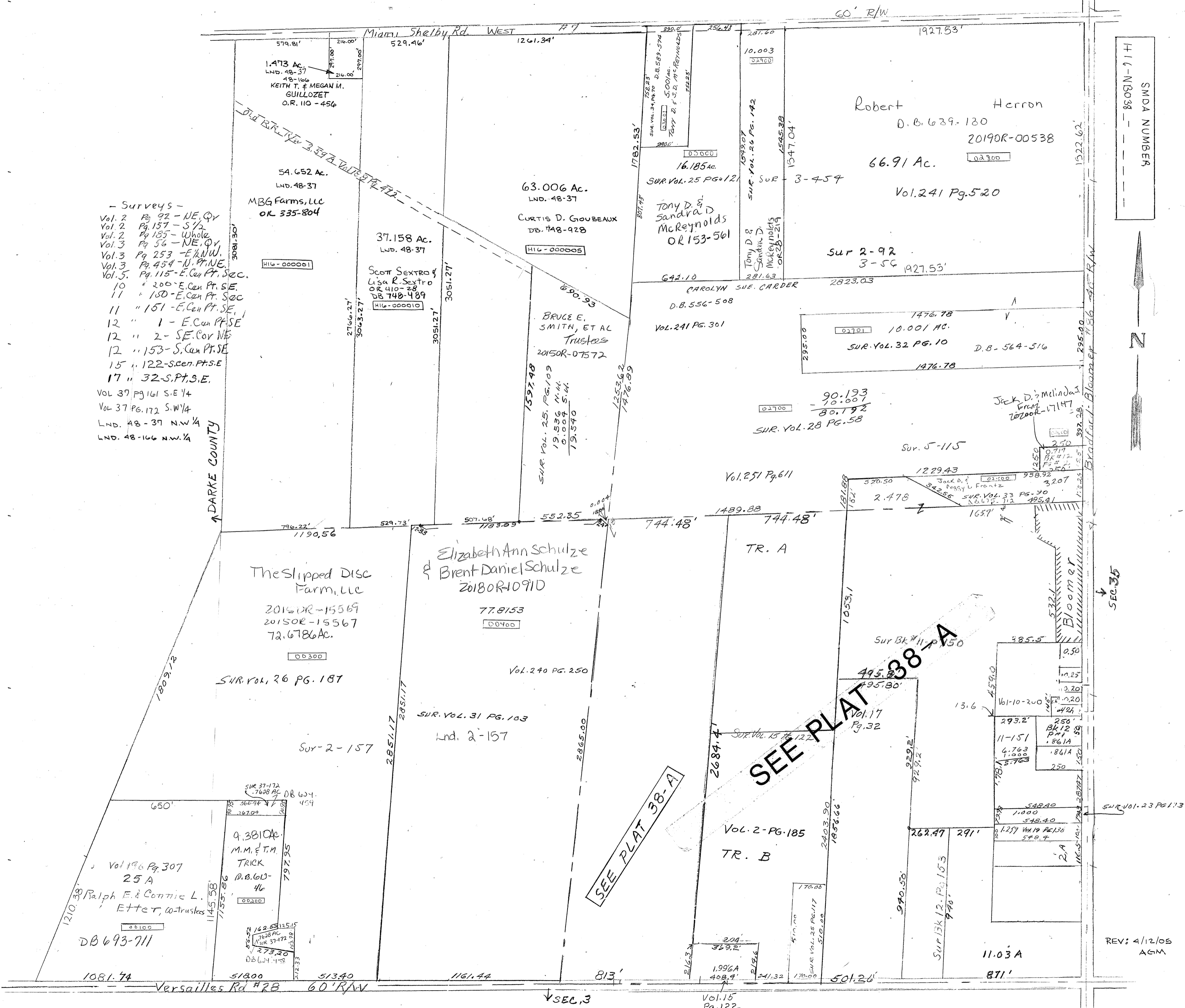
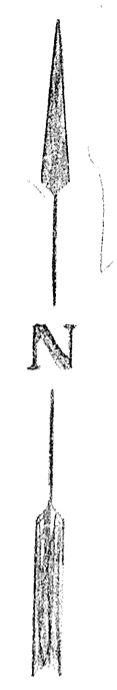


60' R/W

- Surveys -
- Vol. 2 Pg. 92 - NE 1/4 QY
 - Vol. 2 Pg. 157 - S 1/2
 - Vol. 2 Pg. 185 - Whole
 - Vol. 3 Pg. 56 - NE 1/4 QY
 - Vol. 3 Pg. 253 - E 1/2 NW 1/4
 - Vol. 3 Pg. 454 - N. Pt. NE 1/4
 - Vol. 5 Pg. 115 - E. Cen. Pt. S.E.C.
 - 10 " 200' - E. Cen. Pt. S.E.
 - 11 " 150' - E. Cen. Pt. S.E.C.
 - 11 " 151' - E. Cen. Pt. S.E.
 - 12 " 1 - E. Cen. Pt. S.E.
 - 12 " 2 - S.E. Cor. NE 1/4
 - 12 " 153' - S. Cen. Pt. S.E.
 - 15 " 122' - S. Cen. Pt. S.E.
 - 17 " 32' - S. Pt. S.E.
 - VOL 37 Pg. 161 S.E. 1/4
 - VOL 37 Pg. 172 S.W. 1/4
 - LND. 48-37 N.W. 1/4
 - LND. 48-166 N.W. 1/4

DARKE COUNTY

SMDA NUMBER
H16-NB038



SEC 35