

Laura
(CORPORATION)

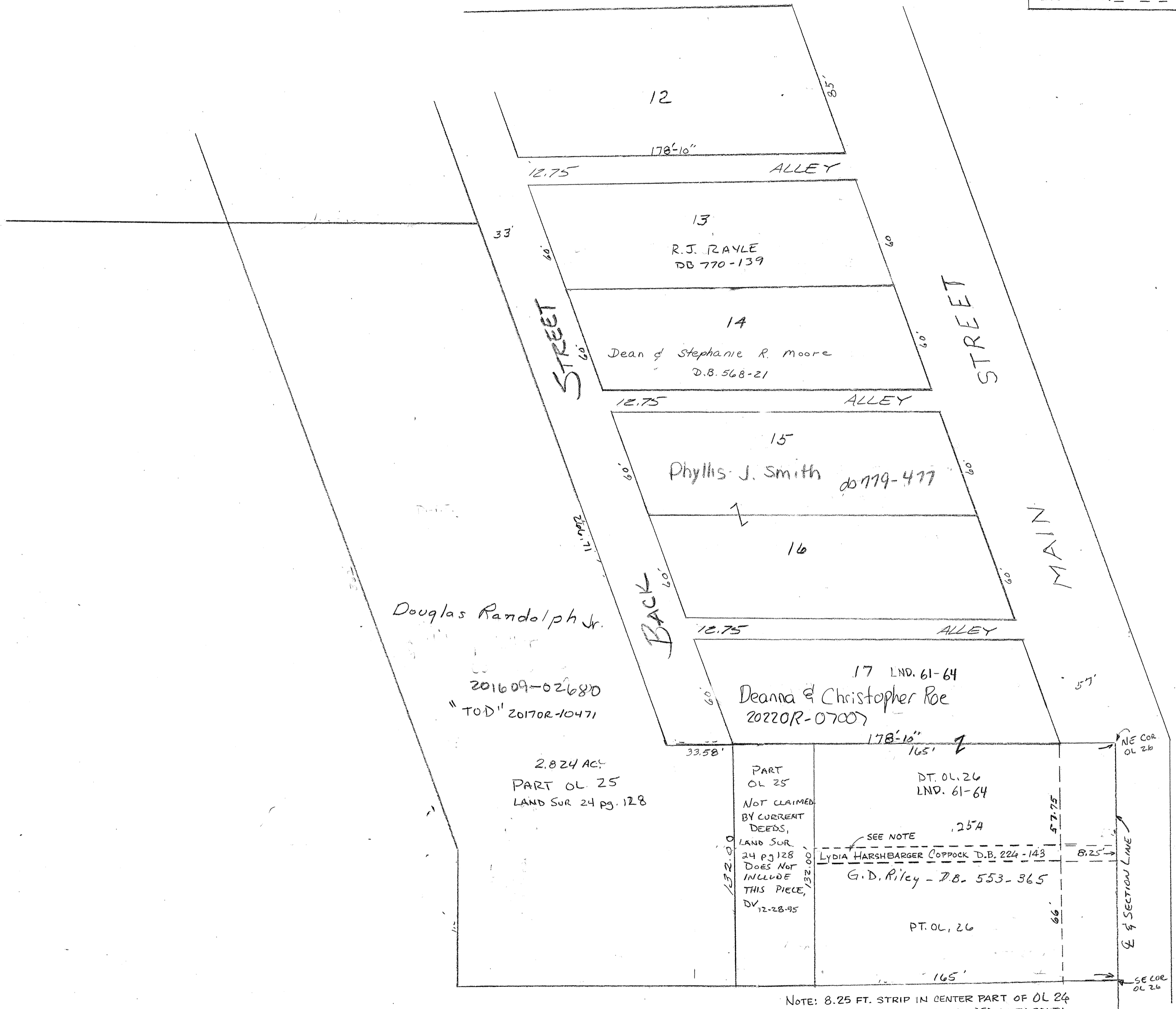
(WARD)

(PRECINCT)

PLAT No. 6

SCALE 1 INCH 40 FEET

SMDA NUMBER
L36-LA006



Douglas Randolph Jr.

201609-02680
"TOD" 2017OR-10471

2.824 AC±
PART OL 25
LAND SUR 24 pg. 128

PART
OL 25
NOT CLAIMED
BY CURRENT
DEEDS,
LAND SUR
24 pg 128
DOES NOT
INCLUDE
THIS PIECE,
DV
12-28-95

PT. OL. 26
LND. 61-64
25A
SEE NOTE
LYDIA HARSHBARGER COPPOCK D.B. 224-143
G.D. Riley - D.B. 553-365

FOR OL 26,
SEE REC. BK 2 PGS 131
AND 141 & D.B. 84 pg. 566

NOTE: 8.25 FT. STRIP IN CENTER PART OF OL 24
WAS HISTORICALLY INCLUDED WITH SOUTH
PART OF THE LOT, UP TO AND INCLUDING
D.B. 226-143. BY CERTIFICATE OF TRANSFER
IN D.B. 243-24, DATED NOV. 4, 1942, THE
DESCRIPTION WAS ERRONEOUSLY REVISED
TO "66 FEET OFF THE SOUTH PART OF
OUTLOT 24," LEAVING THE STRIP IN QUESTION.
ANDY SMITH, MAP DEPT. 10-22-2019

REVISED 05/03/2022
JA