

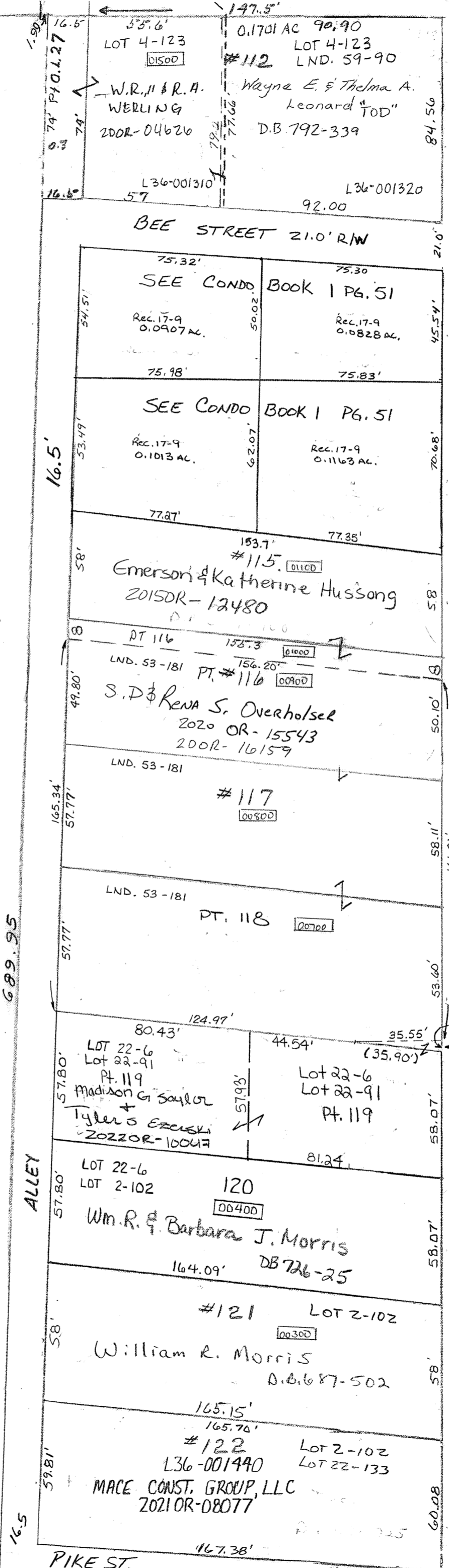
PARCEL NUMBER
L36



Condo Book 1, 51 & 51A
Lots 178-181

Rec. 3 PG. 63
Rec. 16 PG. 58
Rec. 17 PG. 9

BEE STREET 21.0' RW
MAIN STREET



PT. O.L. #27

Douglas Randolph Jr.
3.475 AC. TO OLD & SR 721
0.195 AC. IN R/W SR 721
LND. 24-128
2016 OR-02680
"TOD"
2017 OR-10471

PROP LINE IS OLD & SR 721