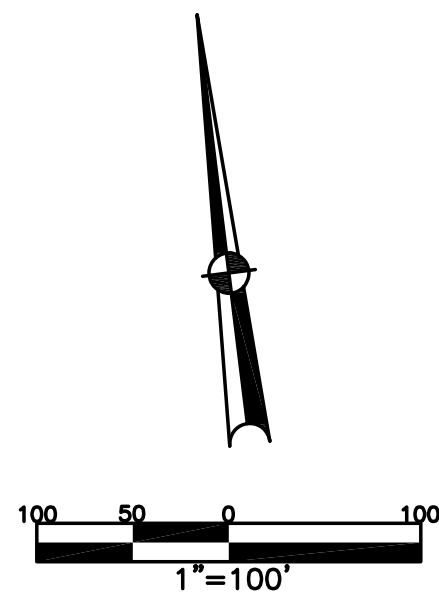


SECTION 19
TOWN 2
RANGE 9

CITY OF HUBER HEIGHTS
MIAMI COUNTY, OHIO

PARCEL ID NUMBER
P48-_____

PLAT 11



ANNEXATION REC. 20-101
WINDBROOKE SECTION ONE
LOTS 315-349
REC. 21-41,41A
REPLAT PART 303
LOTS 1609-1611
REC. 28-45

OR 420-436
2018OR-01010
(EASEMENTS)

PT. INLOT 303
0.941 ACRE
LAND SURVEY 59-10
CITY OF HUBER
HEIGHTS, OHIO
OR 202-361

INLOT 1609
REC. 28-45
8.755 ACRES

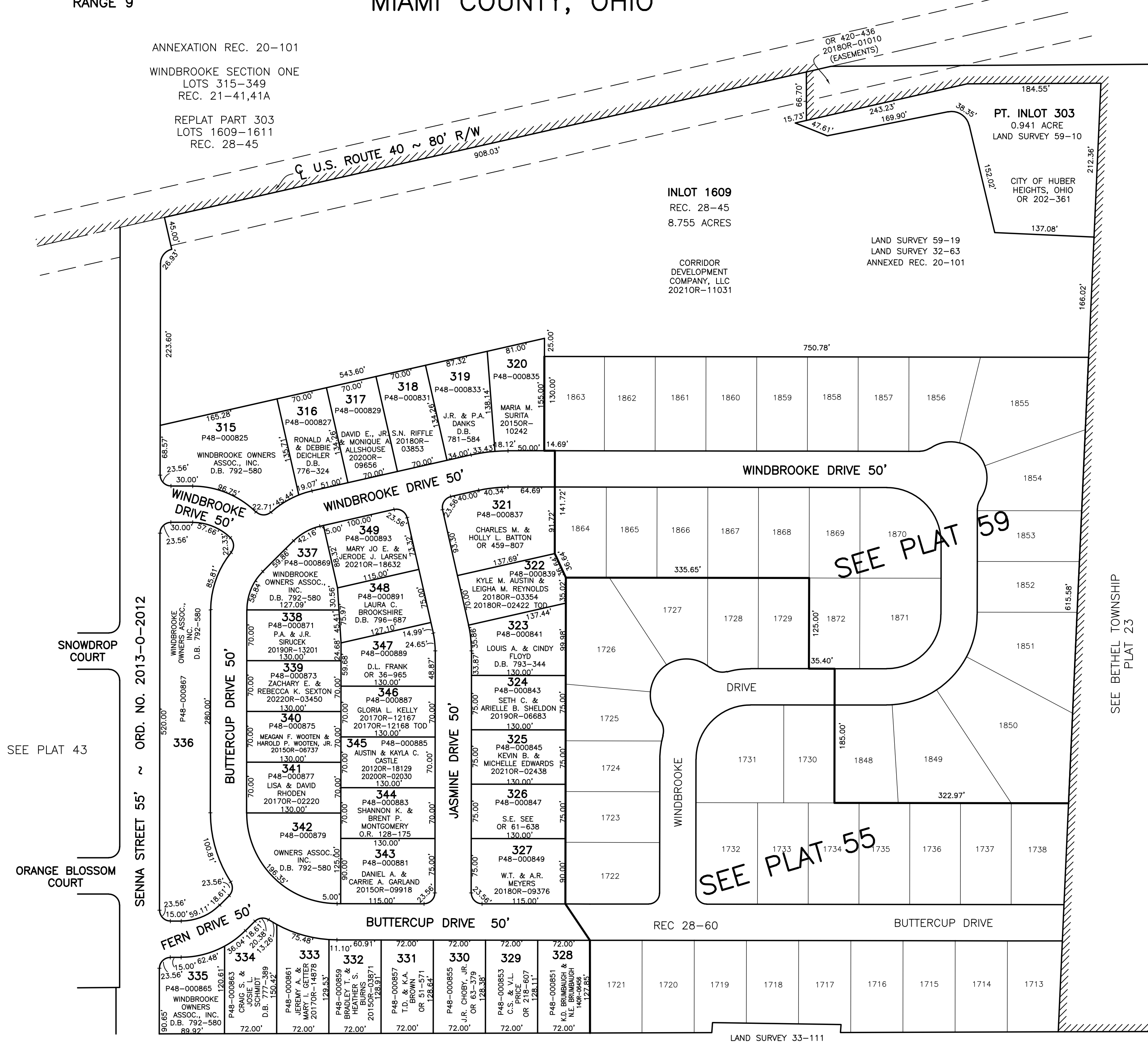
CORRIDOR
DEVELOPMENT
COMPANY, LLC
20210R-11031

LAND SURVEY 59-19
LAND SURVEY 32-63
ANNEXED REC. 20-101

ABBREVIATION LEGEND	
2014OR-07759	= RECORDER'S DOCUMENT NUMBER
OR 406-509	= OFFICIAL RECORD 406 PAGE 509
D.B. 677-326	= DEED BOOK 677, PAGE 326
REC. 18-87	= RECORDER'S PLAT BOOK 18, PAGE 87
LND. 56-145	= LAND SURVEY VOLUME 56, PAGE 145
LOT 24-200	= LOT SURVEY VOLUME 24, PAGE 200
R.R. 8-18	= ROAD RECORD VOLUME 8, PAGE 18
R/W	= RIGHT OF WAY
C	= CENTERLINE
AC.	= ACRES
TWP.	= TOWNSHIP
TR.	= TRACT
IL	= INLOT

LINE LEGEND	
	Blow-up Boundary
	Property Line
	Lot Split Line
	Section Line
	Centerline
	Right-of-Way Line
	Corporation Line

SURVEY INDEX	
REC. 20-101	LND. 32-63
REC. 21-41	LND. 33-111
REC. 28-45	LND. 59-10
REC. 29-21	LND. 59-19



SEE PLAT 59

SEE PLAT 55

SEE BETHEL TOWNSHIP
PLAT 23

SEE PLAT 43

SEE PLAT 34

SEE PLAT 35

PREPARED BY: MIAMI COUNTY ENGINEER'S MAP DEPARTMENT
PAUL P. HUELSKAMP, P.E., P.S., COUNTY ENGINEER
DATE: SEPTEMBER 23, 2005
REVISED: March 4, 2022 APALMER