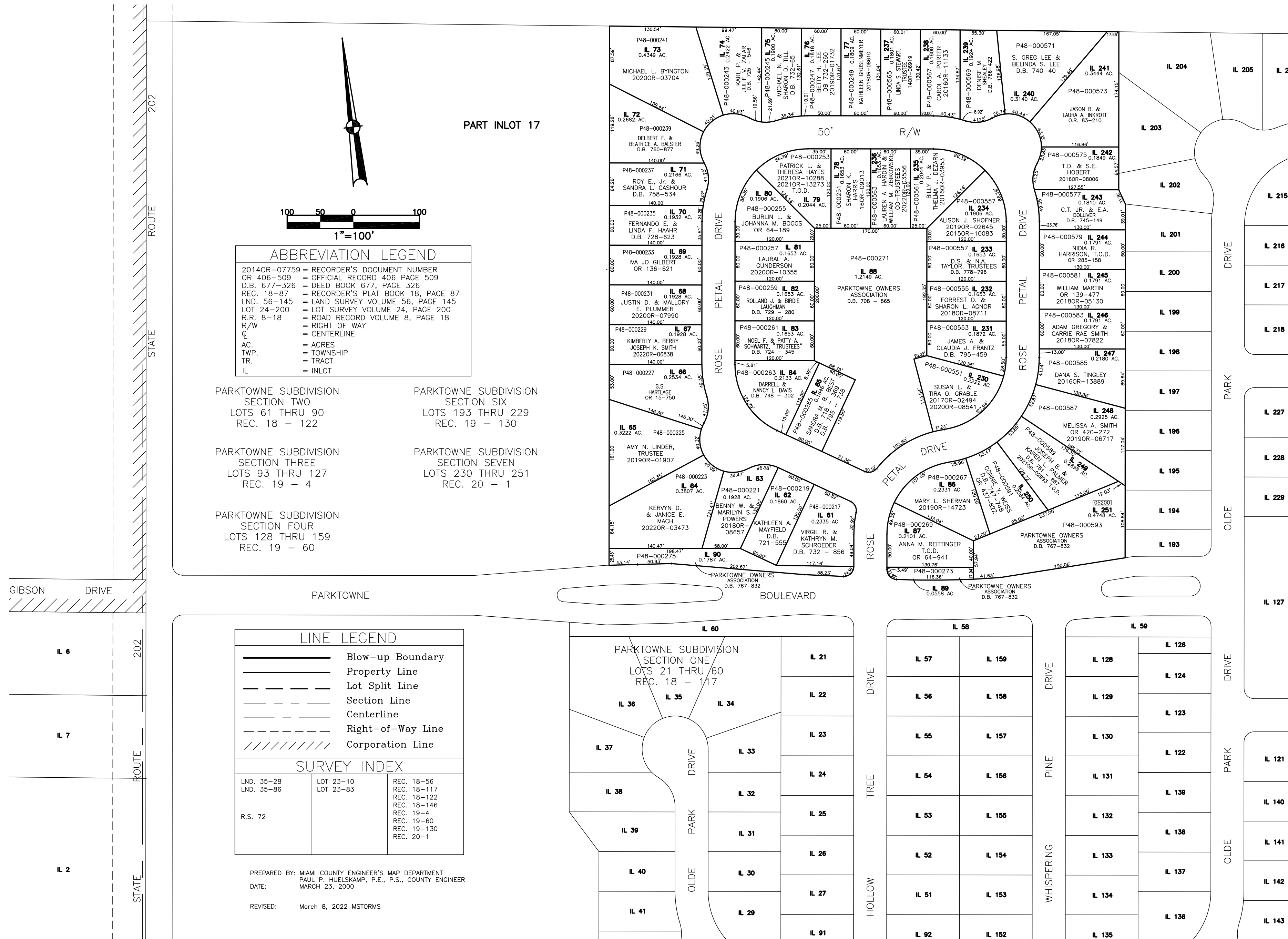


SECTION 25
TOWN 2
RANGE 9

CITY OF HUBER HEIGHTS
MIAMI COUNTY, OHIO

PARCEL ID NUMBER
P48-

PLAT 5



ABBREVIATION LEGEND

2014OR-07759	=	RECORDER'S DOCUMENT NUMBER
OR 406-509	=	OFFICIAL RECORD 406 PAGE 509
D.B. 677-326	=	DEED BOOK 677, PAGE 326
REC. 18-87	=	RECORDER'S PLAT BOOK 18, PAGE 87
LND. 56-145	=	LAND SURVEY VOLUME 56, PAGE 145
L.R. 24-200	=	LOT SURVEY VOLUME 24, PAGE 200
R.R. 8-18	=	ROAD RECORD VOLUME 8, PAGE 18
R/W	=	RIGHT OF WAY
C	=	CENTERLINE
AC.	=	ACRES
TWP.	=	TOWNSHIP
TR.	=	TRACT
IL	=	INLOT

PARKTOWNE SUBDIVISION SECTION TWO LOTS 61 THRU 90 REC. 18 - 122	PARKTOWNE SUBDIVISION SECTION SIX LOTS 193 THRU 229 REC. 19 - 130
PARKTOWNE SUBDIVISION SECTION THREE LOTS 93 THRU 127 REC. 19 - 4	PARKTOWNE SUBDIVISION SECTION SEVEN LOTS 230 THRU 251 REC. 20 - 1
PARKTOWNE SUBDIVISION SECTION FOUR LOTS 128 THRU 159 REC. 19 - 60	

LINE LEGEND

	Blow-up Boundary
	Property Line
	Lot Split Line
	Section Line
	Centerline
	Right-of-Way Line
	Corporation Line

SURVEY INDEX

LND. 35-28	LOT 23-10	REC. 18-56
LND. 35-86	LOT 23-83	REC. 18-117
		REC. 18-122
		REC. 18-146
R.S. 72		REC. 19-4
		REC. 19-60
		REC. 19-130
		REC. 20-1

PREPARED BY: MIAMI COUNTY ENGINEER'S MAP DEPARTMENT
PAUL P. HUELSKAMP, P.E., P.S., COUNTY ENGINEER
DATE: MARCH 23, 2020
REVISED: March 8, 2022 MStorms

