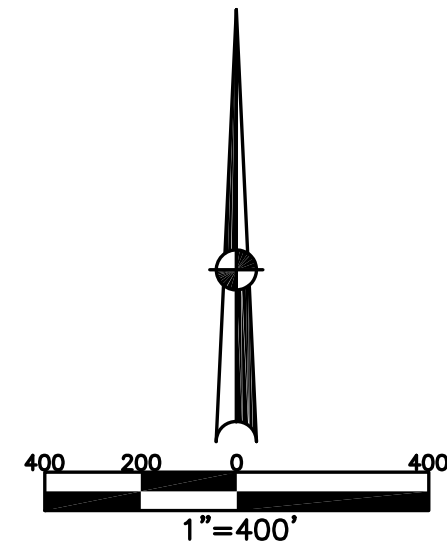


ELIZABETH TOWNSHIP  
MIAMI COUNTY, OHIO

SECTION 1 TOWN 2 RANGE 10

PLAT 1



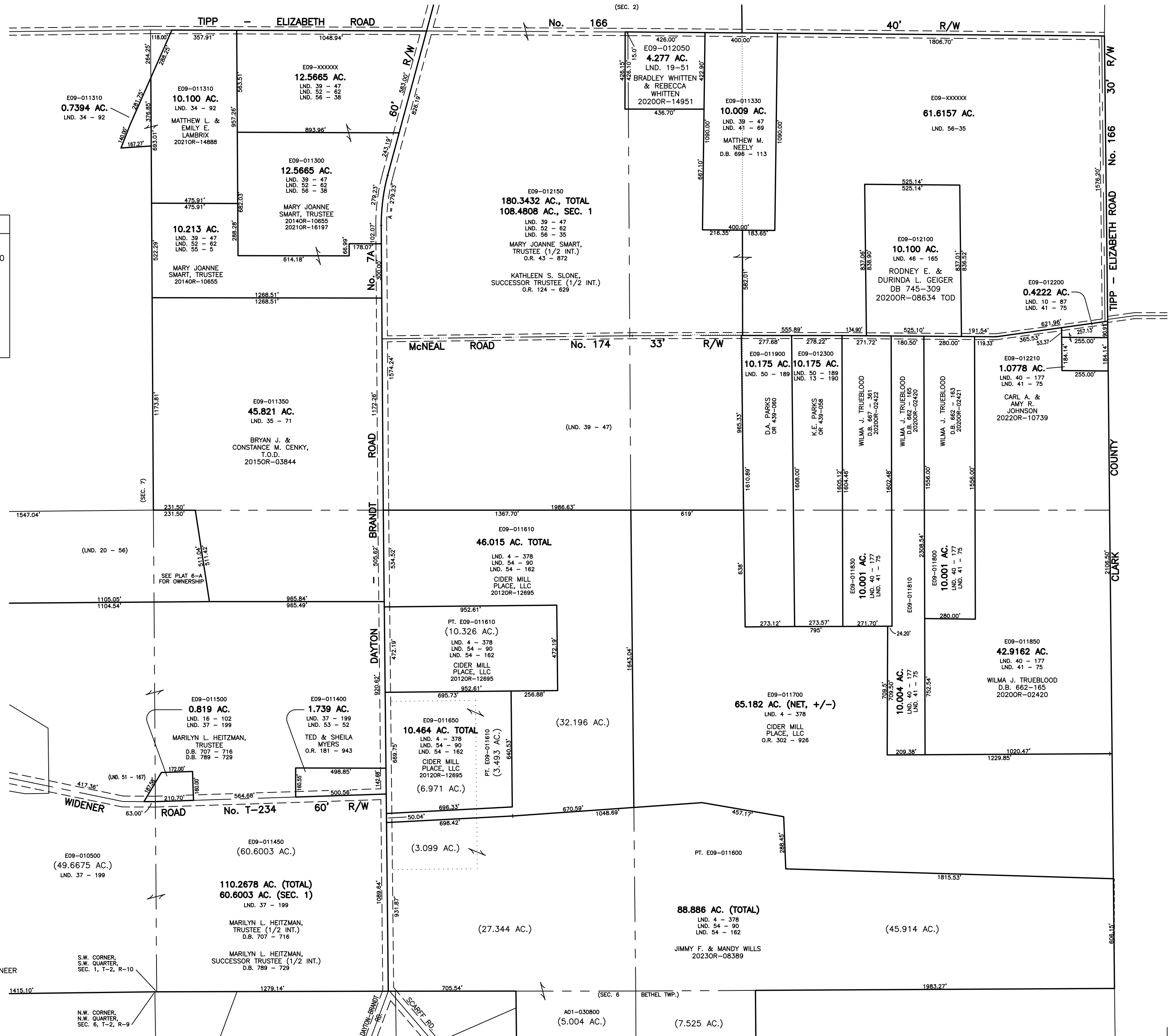
**ABBREVIATION LEGEND**

2014OR-07759 =	RECORDER'S DOCUMENT NUMBER
D.B. 613-172 =	DEED BOOK 613, PAGE 172
O.R. 125-500 =	OFFICIAL RECORDS VOL. 125, PAGE 500
REC. 15-72 =	RECORDER'S PLAT BOOK 15, PAGE 72
LND. 33-15 =	LAND SURVEY VOLUME 33, PAGE 15
LOT 19-12 =	LOT SURVEY VOLUME 19, PAGE 12
R.R. 8-29 =	ROAD RECORD VOLUME 8, PAGE 29
R/W	= RIGHT OF WAY
⊕	= CENTERLINE
AC.	= ACRES
TWP.	= TOWNSHIP
TR.	= TRACT
Ⓢ	= LOT CREATED BY RECORDER'S PLAT

**SURVEY INDEX**

NORTHEAST QUARTER		
LND. 10 - 87		
LND. 13 - 190		
LND. 19 - 51		
LND. 39 - 47		
LND. 40 - 177		
LND. 41 - 69		
LND. 41 - 75		
LND. 46 - 165		
LND. 50 - 189		
LND. 52 - 62		
LND. 56 - 35		
SOUTHEAST QUARTER		
LND. 4 - 378		
LND. 40 - 177		
LND. 41 - 75		
LND. 50 - 189		
LND. 54 - 162		
SOUTHWEST QUARTER		
LND. 4 - 378		
LND. 16 - 102		
LND. 20 - 56		
LND. 32 - 156		
LND. 35 - 71		
LND. 37 - 199		
LND. 51 - 167		
LND. 53 - 52		
LND. 54 - 90		
LND. 54 - 162		
NORTHWEST QUARTER		
LND. 19 - 51		
LND. 34 - 92		
LND. 35 - 71		
LND. 39 - 47		
LND. 52 - 62		
LND. 55 - 5		
LND. 56 - 35		
LND. 56 - 38		

PREPARED BY: MIAMI COUNTY ENGINEER'S MAP DEPARTMENT  
PAUL P. HUELSKAMP, P.E., P.S., COUNTY ENGINEER  
DATE: FEBRUARY 14, 2013  
DATE: August 4, 2023 DCASSEL



S.W. CORNER,  
S.W. QUARTER,  
SEC. 1, T-2, R-10

N.W. CORNER,  
N.W. QUARTER,  
SEC. 6, T-2, R-9

A01-030800  
(5.004 AC.)

(7.525 AC.)

COUNTY

CLARK