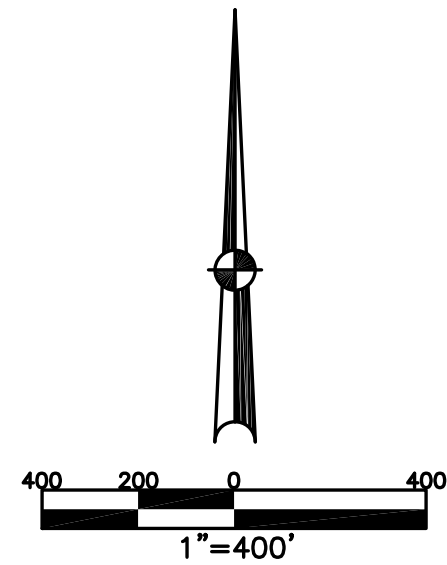


ELIZABETH TOWNSHIP
MIAMI COUNTY, OHIO

SECTION 17 TOWN 2 RANGE 10

PARCEL NUMBER
E09-_____

PLAT 15

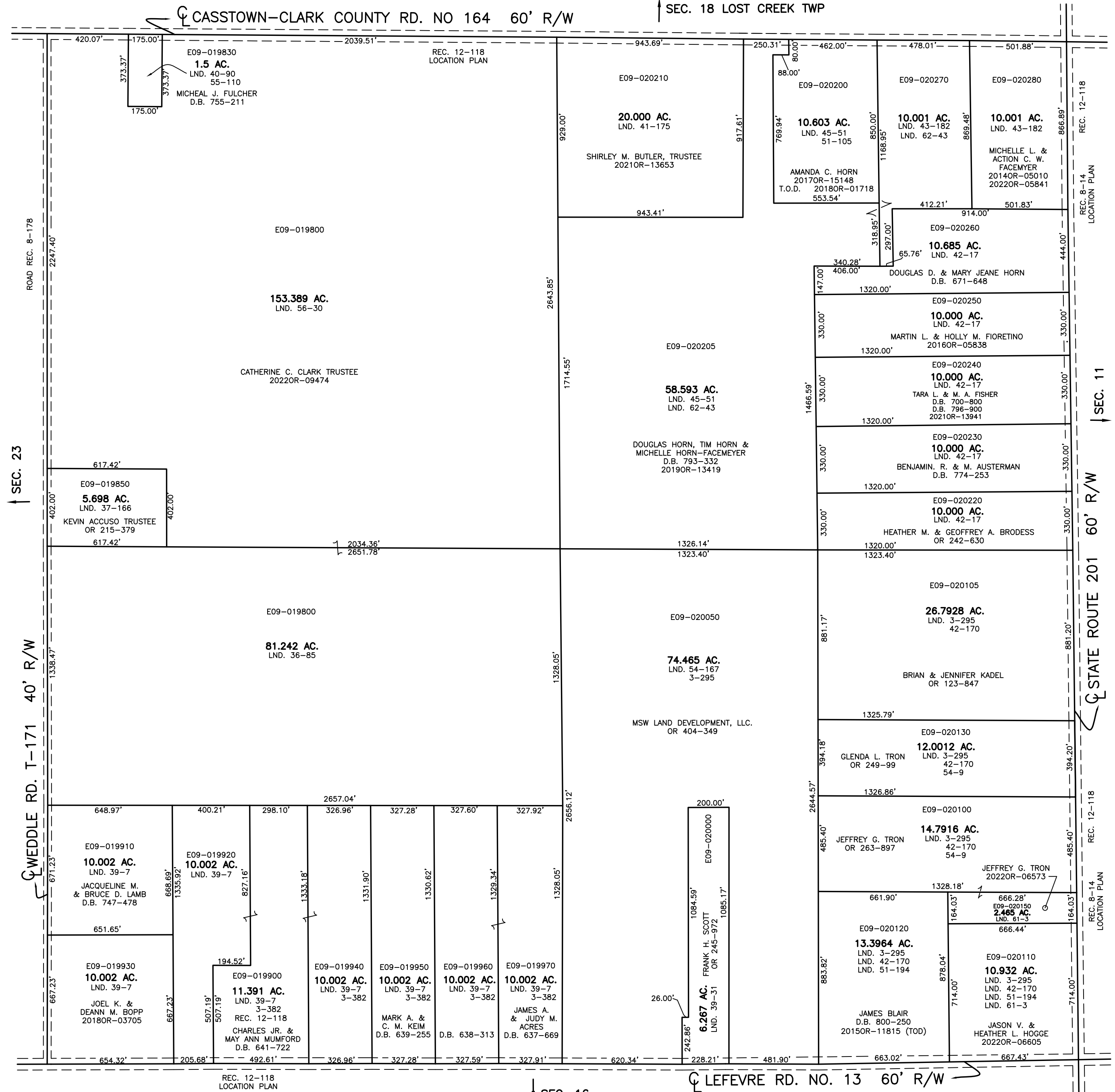


ABBREVIATION LEGEND	
2014OR-07759	= RECORDER'S DOCUMENT NUMBER
OR 257-619	= OFFICIAL RECORD 257 PAGE 619
D.B. 613-172	= DEED BOOK 613, PAGE 172
REC. 15-72	= RECORDER'S PLAT BOOK 15, PAGE 72
LND. 33-15	= LAND SURVEY VOLUME 33, PAGE 15
LOT 19-12	= LOT SURVEY VOLUME 19, PAGE 12
R.R. 8-29	= ROAD RECORD VOLUME 8, PAGE 29
R/W	= RIGHT OF WAY
CL	= CENTERLINE
AC.	= ACRES
TWP.	= TOWNSHIP
TR.	= TRACT
②	= LOT CREATED BY RECORDER'S PLAT

LINE LEGEND	
	Blow-up Boundary
	Property Line
	Lot Split Line
	Section Line
	Centerline
	Right-of-Way Line
	Corporation Line

SURVEY INDEX	
NORTHEAST QUARTER	
LND. 41-175	REC. 8-14
LND. 42-17	REC. 12-118
LND. 43-182	
LND. 45-51	
LND. 51-105	
LND. 62-43	
SOUTHEAST QUARTER	
LND. 1-218	REC. 8-14
LND. 3-295	REC. 12-118
LND. 39-31	
LND. 42-170	
LND. 54-9	
LND. 54-167	
LND. 61-3	
SOUTHWEST QUARTER	
LND. 1-218	REC. 12-118
LND. 3-382	
LND. 36-85	
LND. 39-7	
NORTHWEST QUARTER	
LND. 37-166	REC. 12-118
LND. 40-90	
LND. 55-110	
LND. 56-30	

PREPARED BY: MIAMI COUNTY ENGINEER'S MAP DEPARTMENT
PAUL P. HUELSKAMP, P.E., P.S., COUNTY ENGINEER
DATE: JANUARY 17, 2019 KD
REVISED: July 14, 2023 DCASSEL



REC. 12-118
LOCATION PLAN

SEC. 16

LEFEVRE RD. NO. 13 60' R/W

STATE ROUTE 201 60' R/W

REC. 8-14
LOCATION PLAN

REC. 12-118
LOCATION PLAN

REC. 8-14
LOCATION PLAN

REC. 12-118
LOCATION PLAN

REC. 8-14
LOCATION PLAN

REC. 12-118
LOCATION PLAN

REC. 8-14
LOCATION PLAN

REC. 12-118
LOCATION PLAN

REC. 8-14
LOCATION PLAN

REC. 12-118
LOCATION PLAN

REC. 8-14
LOCATION PLAN