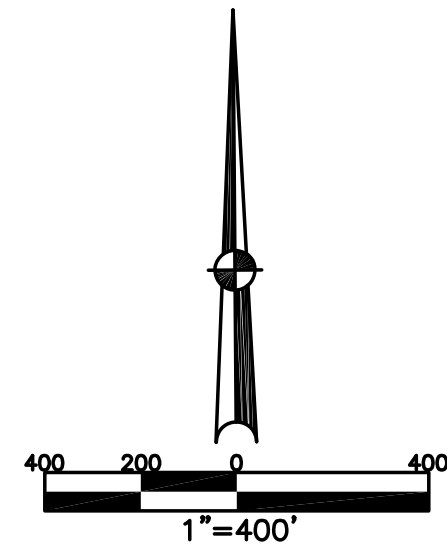


CONCORD TWP.
MIAMI COUNTY, OHIO

SECTION 4 TOWN 4 RANGE 6

PARCEL NUMBER
C06

PLAT 5



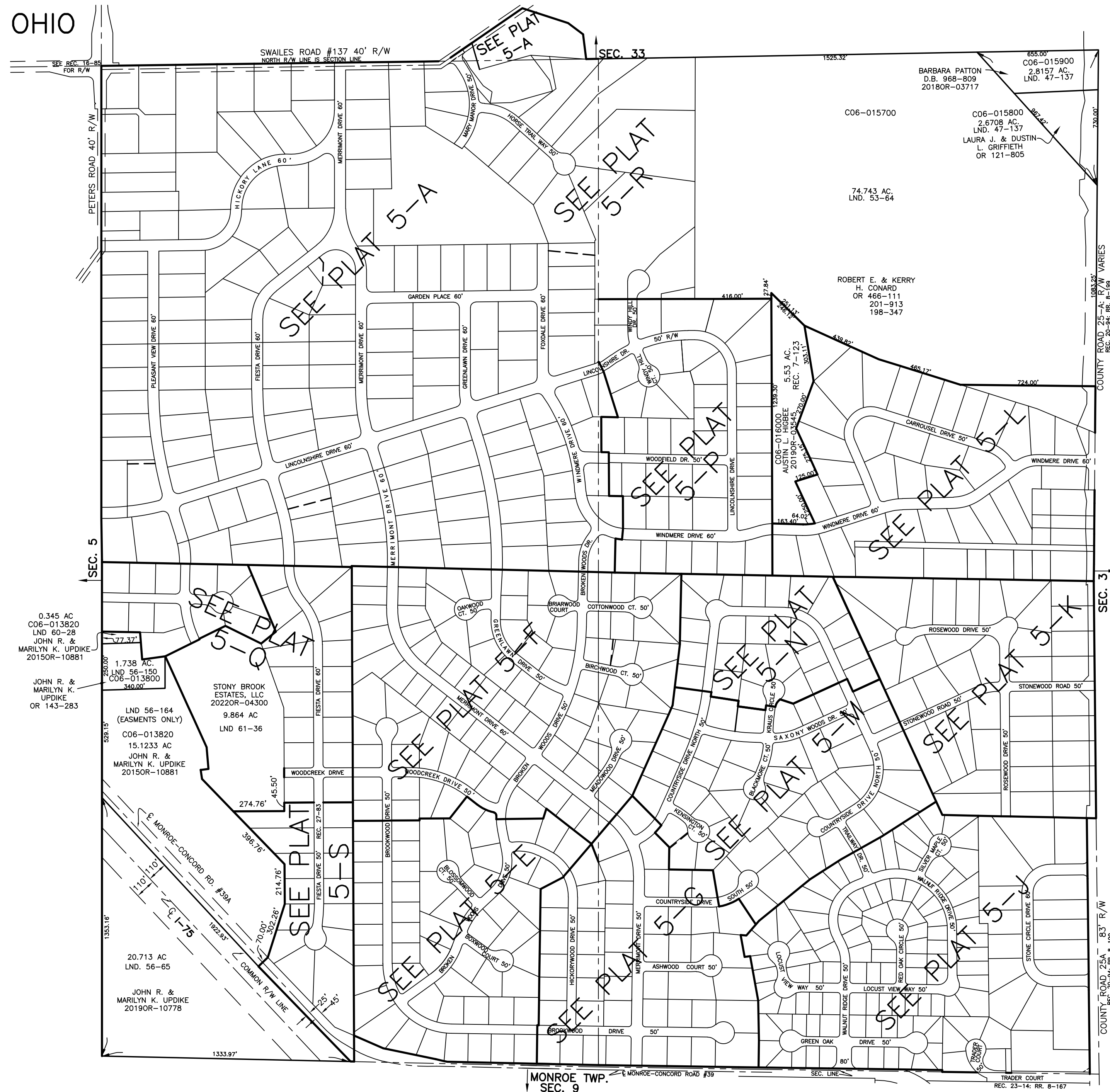
ABBREVIATION LEGEND	
20140R-07759	= RECORDER'S DOCUMENT NUMBER
OR 257-619	= OFFICIAL RECORD 257 PAGE 619
D.B. 613-172	= DEED BOOK 613, PAGE 172
REC. 15-72	= RECORDER'S PLAT BOOK 15, PAGE 72
LND. 33-15	= LAND SURVEY VOLUME 33, PAGE 15
LOT 19-12	= LOT SURVEY VOLUME 19, PAGE 12
R.R. 8-29	= ROAD RECORD VOLUME 8, PAGE 29
R/W	= RIGHT OF WAY
C	= CENTERLINE
AC.	= ACRES
TWP.	= TOWNSHIP
TR.	= TRACT
Ⓢ	= LOT CREATED BY RECORDER'S PLAT

LINE LEGEND	
	Blow-up Boundary
	Property Line
	Lot Split Line
	Section Line
	Centerline
	Right-of-Way Line
	Corporation Line

SURVEY INDEX	
NORTHEAST QUARTER	
LND. 29-6	REC. 7-123
LND. 47-137	REC. 20-94
LND. 53-64	
LND. 57-124	RR. 8-199
LND. 58-180	

SOUTHWEST QUARTER	
LND. 56-65	
LND. 56-150	
LND. 56-164	
LND. 59-76	
LND. 60-28	
(LND. 61-36)	

NORTHWEST QUARTER	
REC. 27-48	



PREPARED BY: MIAMI COUNTY ENGINEER'S MAP DEPARTMENT
PAUL P. HUELSKAMP, P.E., P.S., COUNTY ENGINEER
DATE: APRIL 27, 2015 MB

REVISED: September 30, 2022 APALMER

MONROE TWP.
SEC. 9

REC. 23-14; RR. 8-187