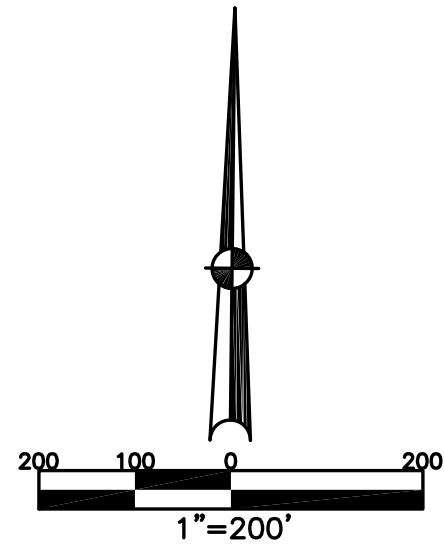


CONCORD TWP.
MIAMI COUNTY, OHIO

SECTION 32 TOWN 5 RANGE 6
NE QUARTER

PARCEL NUMBER
CO6-

PLAT 32-A

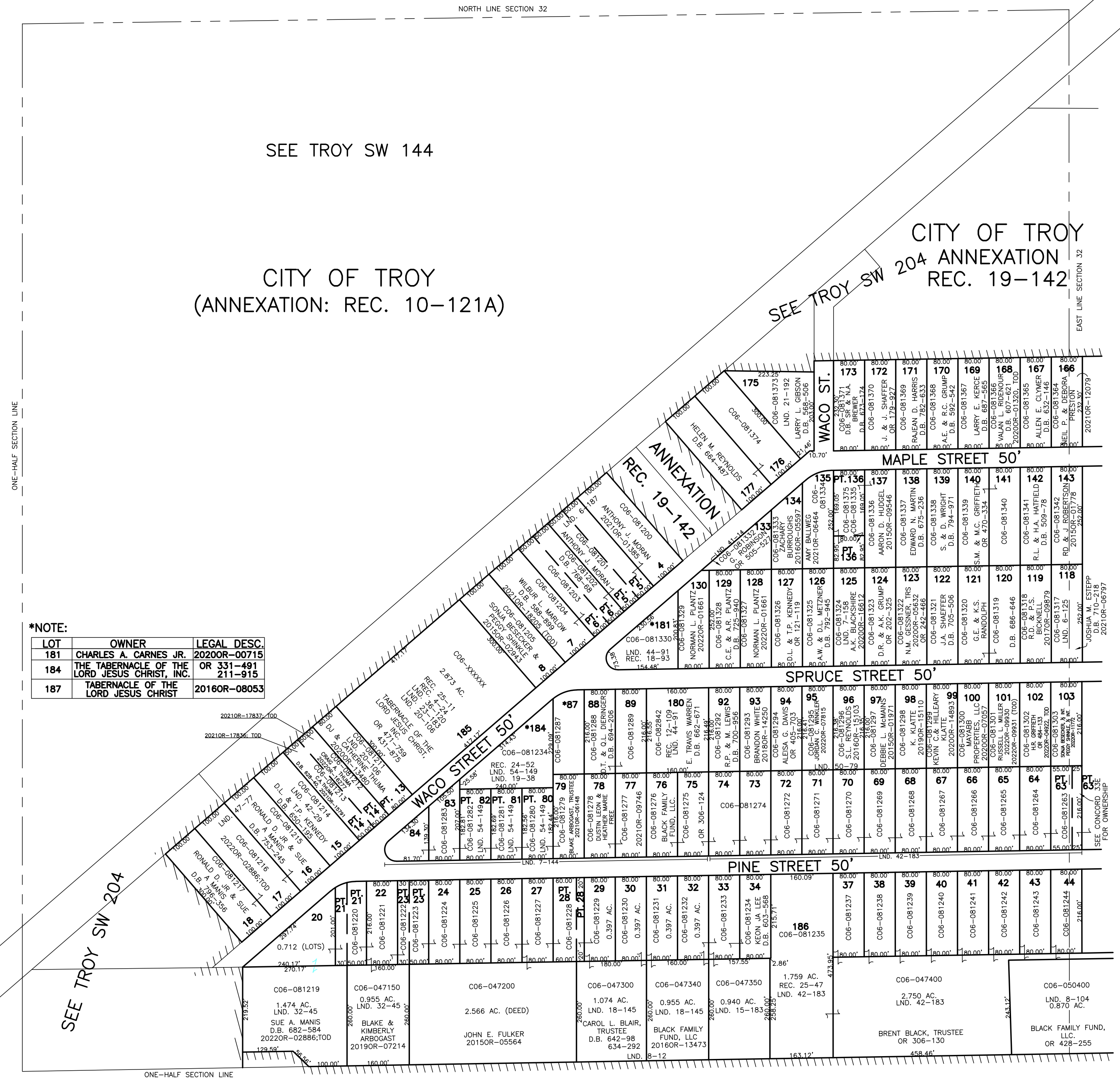


ABBREVIATION LEGEND		
2014OR-07759	=	RECORDER'S DOCUMENT NUMBER
OR 257-619	=	OFFICIAL RECORD 257 PAGE 619
D.B. 613-172	=	DEED BOOK 613, PAGE 172
REC. 15-72	=	RECORDER'S PLAT BOOK 15, PAGE 72
LND. 33-15	=	LAND SURVEY VOLUME 33, PAGE 15
LOT 19-12	=	LOT SURVEY VOLUME 19, PAGE 12
R.R. 8-29	=	ROAD RECORD VOLUME 8, PAGE 29
R/W	=	RIGHT OF WAY
C	=	CENTERLINE
AC.	=	ACRES
TWP.	=	TOWNSHIP
TR.	=	TRACT
②	=	LOT CREATED BY RECORDER'S PLAT

LINE LEGEND	
	Blow-up Boundary
	Property Line
	Lot Split Line
	Section Line
	Centerline
	Right-of-Way Line
	Corporation Line

SURVEY INDEX		
LND. 6-125	LND. 20-106	REC. 4-24
LND. 6-126	LND. 21-11	REC. 4-48
LND. 6-127	LND. 21-192	REC. 4-49
LND. 6-187	LND. 23-183	REC. 4-66
LND. 7-144	LND. 27-166	REC. 10-121A
LND. 7-158	LND. 29-122	REC. 12-109
LND. 8-12	LND. 30-187	REC. 15-91
LND. 8-104	LND. 32-45	REC. 18-93
LND. 8-148	LND. 41-14	REC. 19-13
LND. 9-192	LND. 41-123	REC. 19-142
LND. 13-138	LND. 42-29	REC. 24-52
LND. 15-27	LND. 42-183	REC. 25-11
LND. 15-183	LND. 44-91	REC. 25-47
LND. 16-32	LND. 47-77	
LND. 18-145	LND. 50-79	
LND. 19-38	LND. 54-149	

HOME ACRES	HOME ACRES-REPLAT
LOTS 1-150	LOT 180
REC. 4-24	REC. 12-109
LOTS 151-160	LOT 181
REC. 4-48	REC. 18-93
LOTS 161-173	LOT 184
REC. 4-49	REC. 24-52
LOTS 174-179	LOT 185
REC. 4-66	REC. 25-11
	LOT 186
	REC. 25-47



SEE TROY SW 144

CITY OF TROY
(ANNEXATION: REC. 10-121A)

SEE TROY SW 204

CITY OF TROY
204 ANNEXATION
REC. 19-142

***NOTE:**

LOT	OWNER	LEGAL DESC.
181	CHARLES A. CARNES JR.	20200R-00715
184	THE TABERNACLE OF THE LORD JESUS CHRIST, INC.	OR 331-491 211-915
187	TABERNACLE OF THE LORD JESUS CHRIST	20160R-08053

PREPARED BY: MIAMI COUNTY ENGINEER'S MAP DEPARTMENT
PAUL P. HUELSKAMP, P.E., P.S., COUNTY ENGINEER
DATE: JANUARY 2, 2015 MB

REVISED: November 14, 2022 JZWEZ