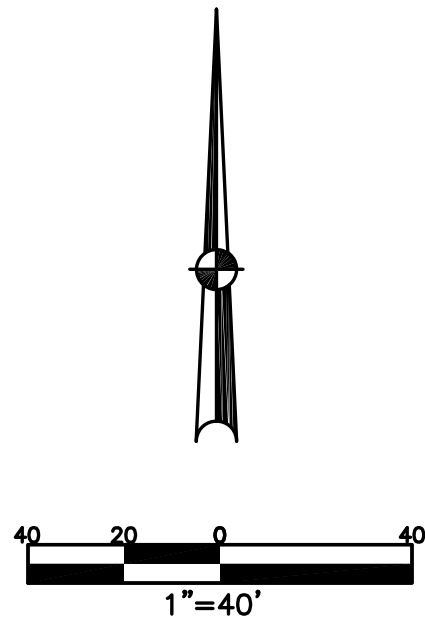


SECTION 22
TOWN 9
RANGE 4

VILLAGE OF BRADFORD
MIAMI COUNTY, OHIO

PARCEL ID NUMBER
H18-_____

PLAT 4



ABBREVIATION LEGEND	
2014OR-00759	= RECORDER'S DOCUMENT RECORD
OR 406-509	= OFFICIAL RECORD 406 PAGE 509
D.B. 613-172	= DEED BOOK 613, PAGE 172
REC. 15-72	= RECORDER'S PLAT BOOK 15, PAGE 72
LND. 33-15	= LAND SURVEY VOLUME 33, PAGE 15
LOT 19-12	= LOT SURVEY VOLUME 19, PAGE 12
R.R. 8-29	= ROAD RECORD VOLUME 8, PAGE 29
R/W	= RIGHT OF WAY
C.	= CENTERLINE
AC.	= ACRES
TWP.	= TOWNSHIP
TR.	= TRACT
IL	= INLOT

LINE LEGEND	
	Blow-up Boundary
	Property Line
	Lot Split Line
	Section Line
	Centerline
	Right-of-Way Line
	Corporation Line

SURVEY INDEX	
REC. 1-243	LOT 11-12
REC. 1-244	

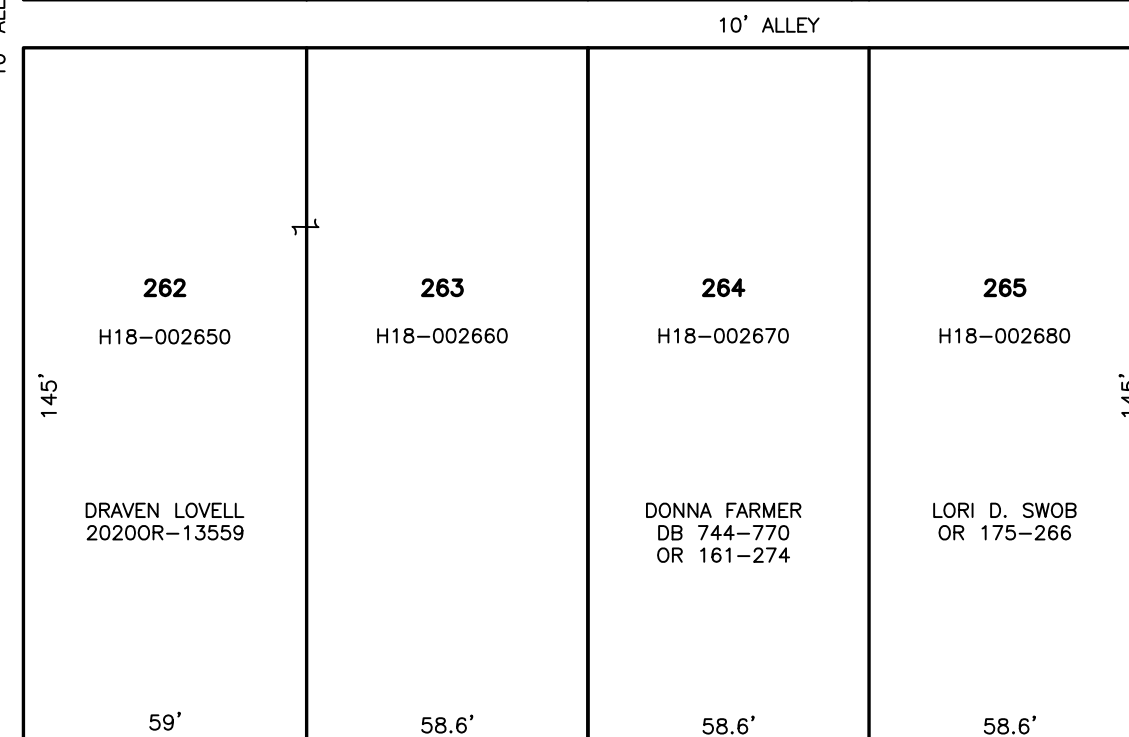
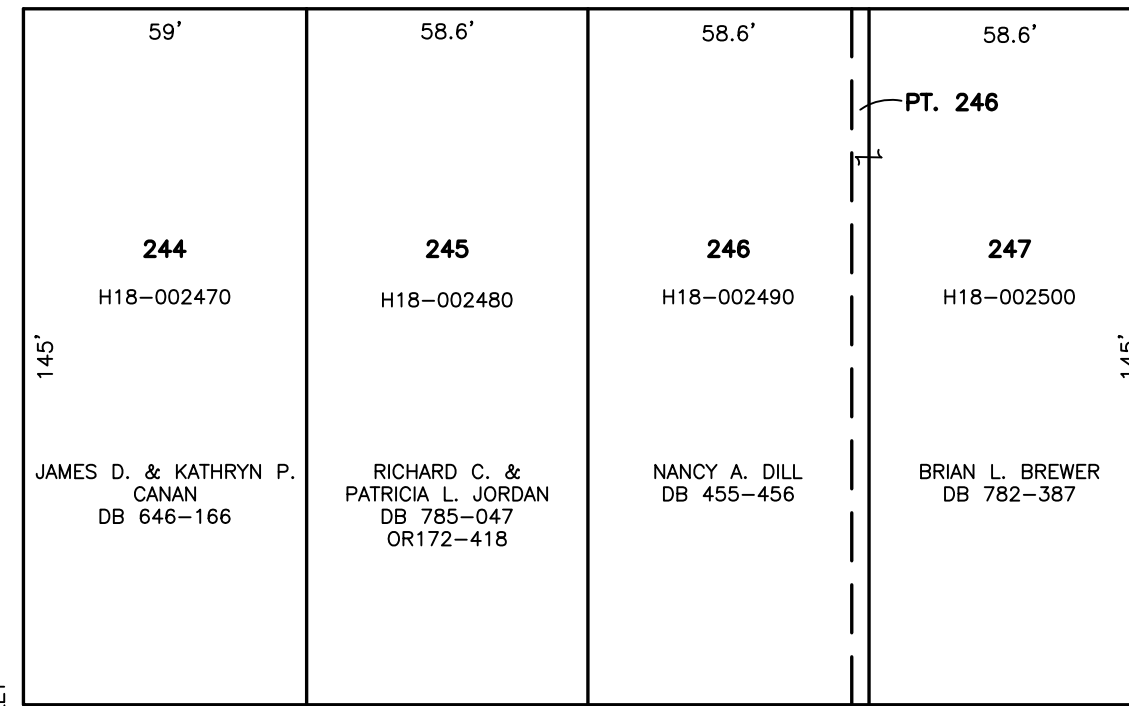
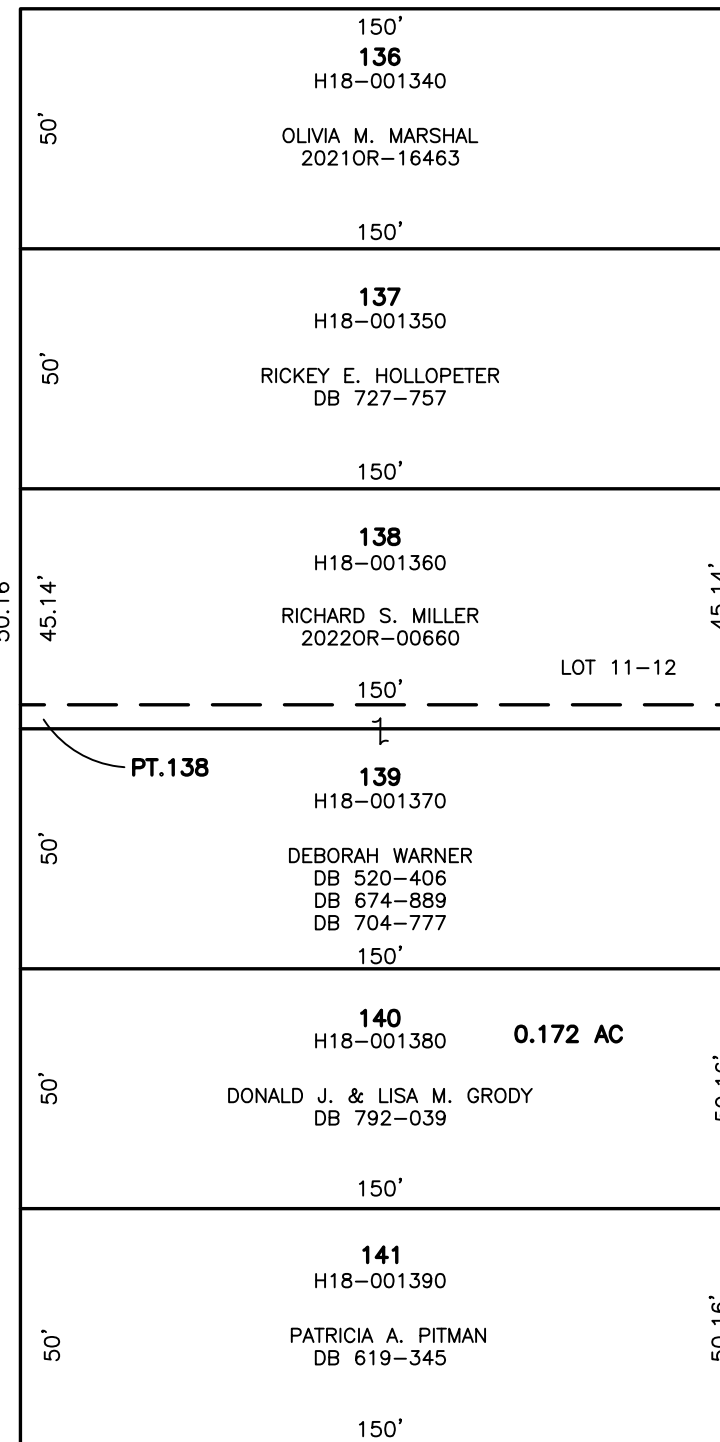
RAIL ROAD ADDITION
LOTS 125-351
REC. BK. 1-243
REC. BK. 1-244

PREPARED BY: MIAMI COUNTY ENGINEER'S MAP DEPARTMENT
PAUL P. HUELSKAMP, P.E., P.S., COUNTY ENGINEER
DATE: DECEMBER 5, 2018 IG
REVISED: January 13, 2022 MSTORMS

SEE PLAT 5

JAMES STREET 50'

MIAMI AVENUE 50' (STATE ROUTE 721)



ELM STREET 50'

SEE PLAT 3

STAUNTON AVENUE 50'

SEE PLAT 10

REC. 1-243
REC. 1-244