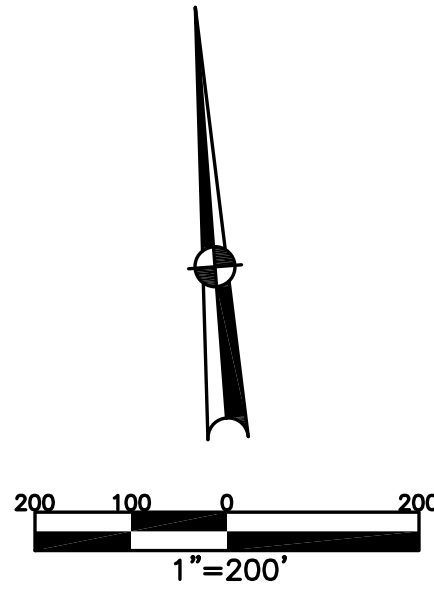


BETHEL TWP.
MIAMI COUNTY, OHIO

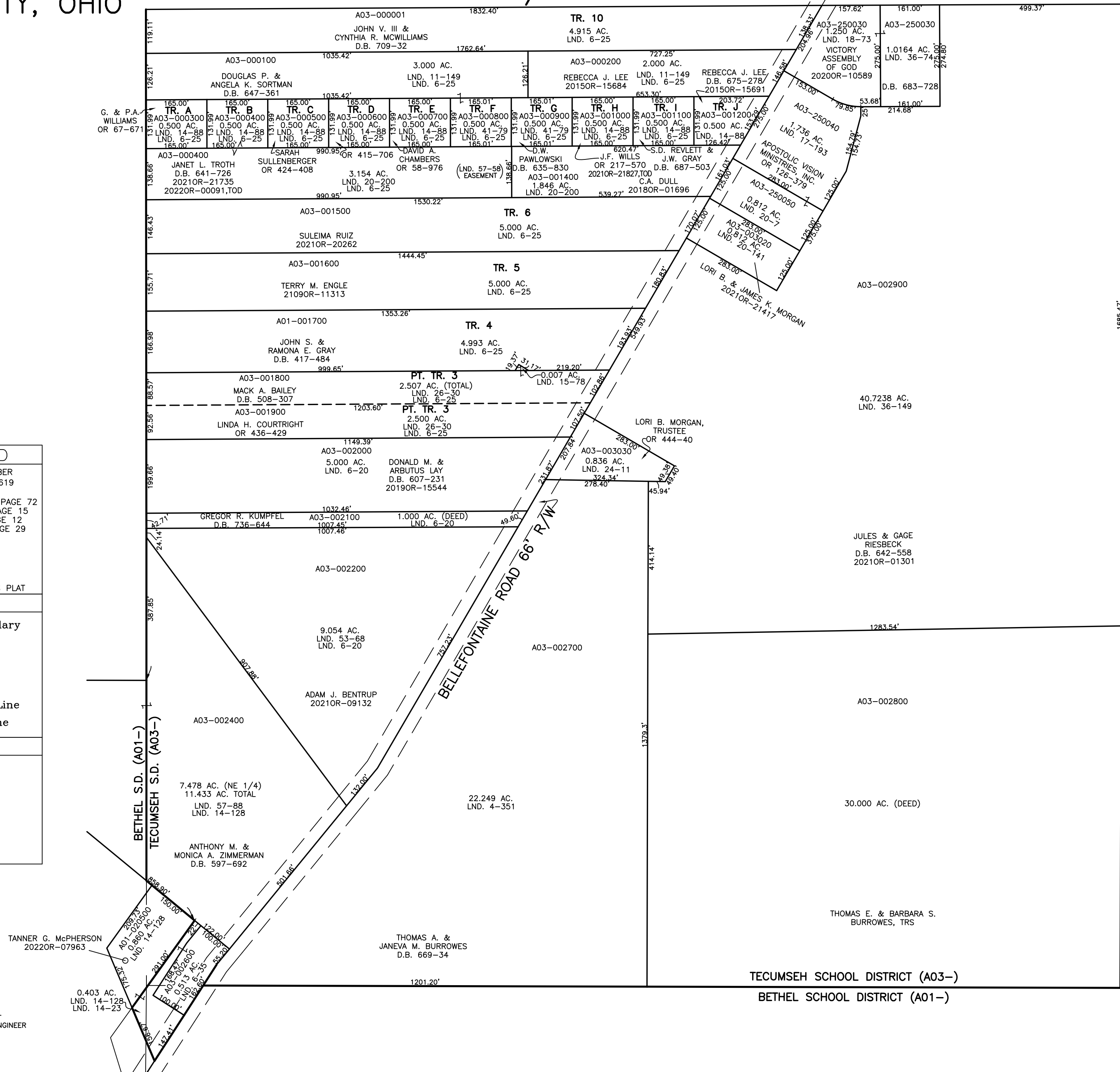
SECTION 1 TOWN 2 RANGE 9
NE 1/4

PARCEL NUMBER
A01 -
A03 -

PLAT 2-A



ABBREVIATION LEGEND		
2014OR-07759 =	RECORDER'S DOCUMENT NUMBER	
OR 257-619 =	OFFICIAL RECORD 257 PAGE 619	
D.B. 613-172 =	DEED BOOK 613, PAGE 172	
REC. 15-72 =	RECORDER'S PLAT BOOK 15, PAGE 72	
LND. 33-15 =	LAND SURVEY VOLUME 33, PAGE 15	
LOT 19-12 =	LOT SURVEY VOLUME 19, PAGE 12	
R.R. 8-29 =	ROAD RECORD VOLUME 8, PAGE 29	
R/W	RIGHT OF WAY	
⊕	CENTERLINE	
AC.	ACRES	
TWP.	TOWNSHIP	
TR.	TRACT	
⊙	LOT CREATED BY RECORDER'S PLAT	
LINE LEGEND		
	Blow-up Boundary	
	Property Line	
	Lot Split Line	
	Section Line	
	Centerline	
	Right-of-Way Line	
	Corporation Line	
SURVEY INDEX		
LND. 4-351	LND. 20-7	
LND. 6-20	LND. 20-141	
LND. 6-25	LND. 20-200	
LND. 6-35	LND. 24-11	
LND. 11-149	LND. 26-30	
LND. 14-23	LND. 36-74	
LND. 14-88	LND. 36-149	
LND. 14-128	LND. 41-79	
LND. 15-78	LND. 53-68	
LND. 17-193	LND. 57-58	
LND. 18-73	LND. 57-88	



PREPARED BY: MIAMI COUNTY ENGINEER'S MAP DEPARTMENT
PAUL P. HUELSKAMP, P.E., P.S., COUNTY ENGINEER
DATE: SEPTEMBER 22, 2015 MB

REVISED: May 20, 2022 MSTORMS

TECUMSEH SCHOOL DISTRICT (A03-)
BETHEL SCHOOL DISTRICT (A01-)