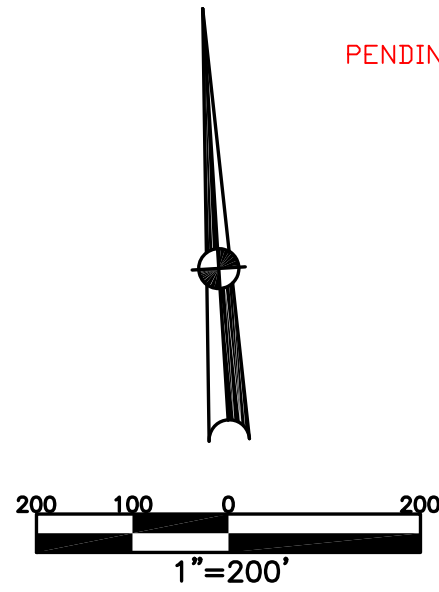


BETHEL TWP.
MIAMI COUNTY, OHIO

SECTION 25 TOWN 2 RANGE 9
SOUTHWEST QUARTER

PARCEL NUMBER
A01-_____

PLAT 29-C



ABBREVIATION LEGEND		
20140R-07759	=	RECORDER'S DOCUMENT NUMBER
OR 257-619	=	OFFICIAL RECORD 257 PAGE 619
D.B. 613-172	=	DEED BOOK 613, PAGE 172
REC. 15-72	=	RECORDER'S PLAT BOOK 15, PAGE 72
LND. 33-15	=	LAND SURVEY VOLUME 33, PAGE 15
LOT 19-12	=	LOT SURVEY VOLUME 19, PAGE 12
R.R. 8-29	=	ROAD RECORD VOLUME 8, PAGE 29
R/W	=	RIGHT OF WAY
C	=	CENTERLINE
AC.	=	ACRES
TWP.	=	TOWNSHIP
TR.	=	TRACT
②	=	LOT CREATED BY RECORDER'S PLAT

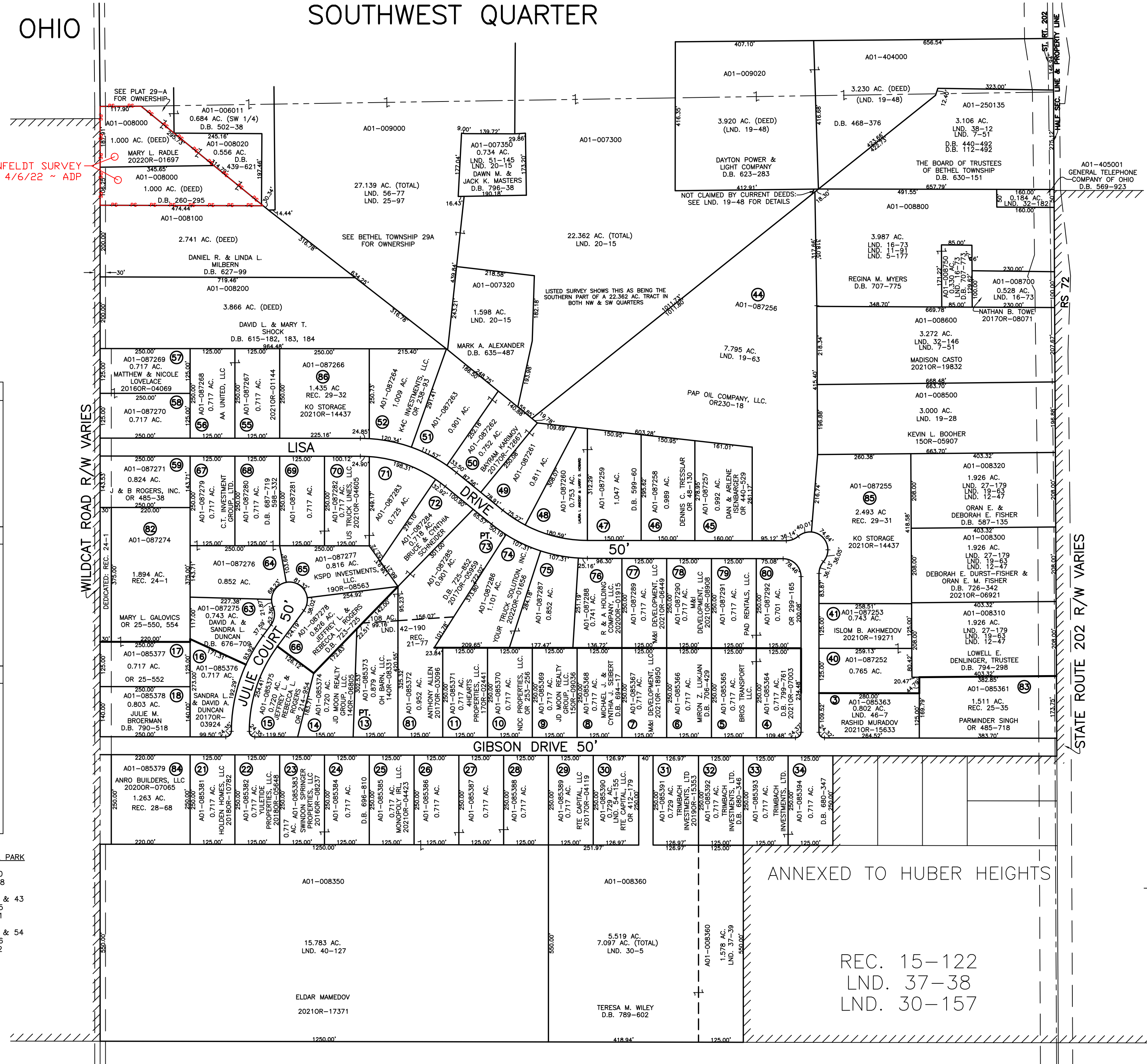
LINE LEGEND	
	Blow-up Boundary
	Property Line
	Lot Split Line
	Section Line
	Centerline
	Right-of-Way Line
	Corporation Line

SURVEY INDEX		
LND. 3-225	LND. 30-5	REC. 10-118
LND. 5-177	LND. 30-157	REC. 11-118
LND. 7-16	LND. 32-146	REC. 15-122
LND. 7-51	LND. 32-182	REC. 21-77
LND. 11-91	LND. 37-38	REC. 24-1
LND. 12-47	LND. 37-39	REC. 25-35
LND. 16-73	LND. 38-12	REC. 28-68
LND. 19-28	LND. 40-127	REC. 29-31
LND. 19-46	LND. 42-190	REC. 29-32
LND. 19-48	LND. 46-7	
LND. 19-63	LND. 51-145	RS 72
LND. 20-15	LND. 54-155	
LND. 25-95	LND. 56-77	
LND. 25-97		
LND. 27-179		

WILEY INDUSTRIAL PARK SEC. 1	WILEY INDUSTRIAL PARK SEC. 2
LOTS 1-40	LOTS 40-80
REC. 10-118	REC. 11-118
	REPLAT LOTS 42 & 43 INTO LOT 85 REC. 29-31
	REPLAT LOTS 53 & 54 INTO LOT 86 REC. 29-32

PREPARED BY: MIAMI COUNTY ENGINEER'S MAP DEPARTMENT
PAUL P. HUELSKAMP, P.E., P.S., COUNTY ENGINEER
DATE: AUGUST 26, 2015 MB

REVISED: April 6, 2022 APALMER



ANNEXED TO HUBER HEIGHTS

REC. 15-122
LND. 37-38
LND. 30-157

STATE ROUTE 202 R/W VARIES